



Pegler Yorkshire
connect & control

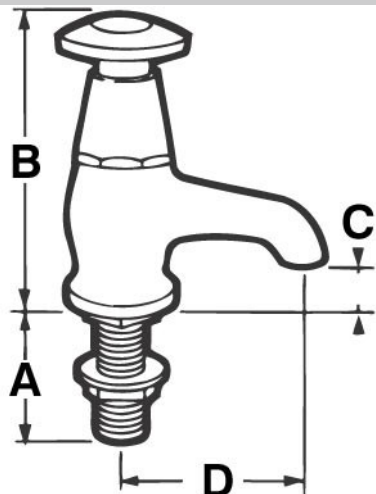
Basin Tap. Time delay maximum 2 seconds

876



Size	Pattern No.	Pack 1 Qty	Pack 2 Qty	Code	Barcode	Price (£) ex VAT
1/2	876 Hot	1	5	314007	5013866005022	£142.41
1/2	876 Cold	1	5	314017	5013866005039	£142.41

876



Code	Description	A	B	C	D
314007	1/2 876 CP HOT PRESTEX BASIN TAP	50	115	16	76
314017					

Pegler Yorkshire reserve the right to change specifications

5 Year Guarantee

Luxury Taps and Mixers

Pegler Yorkshire Customcare 5 Year Guarantee - Terms and Conditions

Product are subject to a 5 year guarantee that is between Pegler Yorkshire and the final purchaser of the product.

The guarantee is subject to proof of purchase being supplied.

This guarantee does not affect any statutory rights the consumer may have in law.

The guarantee covers manufacturing or material defects and does not cover parts subject to normal wear and tear.

Finishes other than chrome are covered for a period of 3 years only and the guarantee on the finish is subject to the cleaning instructions being followed.

The guarantee is not applicable where the product is fitted contrary to the conditions in the fitting instructions.

Abusive behaviour and accidental damage to the product are not covered by this guarantee.

The extent of this liability is limited to the cost of the replacement of the defective item and not to fitting or consequential damages.

Description	Minimum Operating Pressure (bar)	Maximum Cold Working Pressure (bar)	Maximum Hot Working Pressure (bar)
876 Basin Taps	0.2 bar	10.0 bar at temperatures up to 85°C	Not Suitable for Maximum Hot Working Pressure

Care

To maintain the surface finish, simply wipe occasionally with a mild detergent on a soft damp cloth. Dry, using a soft cloth. Never use abrasive cleaners or chemical household cleaners and avoid contact with concentrated bleach.

Maintenance

No regular maintenance is required for this product.

In case of complete replacement Pegler recommend service valves should be fitted to the supply inlets.

For any further help or replacement parts please contact the Service Support Team on 0800 1560050.

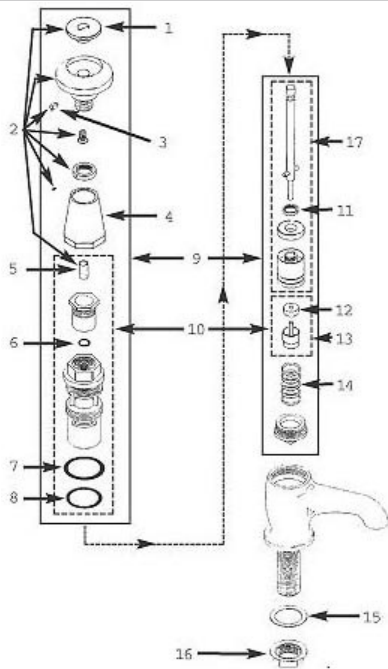
Regulations

It is important to ensure that the water supplies to your taps and mixers are connected in accordance with the water regulations (WRAS) requirements and good plumbing practice.

If the water flow streams are separate all the way to the outlet of the fitting, then there is no requirement to fit check valves to the cold and hot pipes even if the supply pressures are unbalanced.

It is recommended that in all new and refurbishment installations a thermostatic mixing valve should be installed on the hot inlet supply. The thermostatic mixing valve is designed to prevent scalding when using the hot water supply.

876



1						
Spare Key	Description	Code	Barcode	Date From	Date To	Price (£) ex VAT
1	INH13CP INDICE HOT CHROME	815001	5013866056871	01/01/1900	To Current	££9.69
1	INC13CP INDICE COLD CHROME	815002	5013866056888	01/01/1900	To Current	££9.69

2						
Spare Key	Description	Code	Barcode	Date From	Date To	Price (£) ex VAT
2	INH3CP INDICE HOT CHROME	815003	5013866056895	01/01/1900	To Current	££24.64
2	INC3CP INDICE COLD CHROME	815004	5013866056901	01/01/1900	To Current	££24.64

3						
Spare Key	Description	Code	Barcode	Date From	Date To	Price (£) ex VAT
3	S9 ALLEN SCREW	815008	5013866056932	01/01/1900	To Current	££1.70
3	S9 ALLEN SCREW	815008	5013866056932	01/01/1900	To Current	££1.70

4						
Spare Key	Description	Code	Barcode	Date From	Date To	Price (£) ex VAT
4	HKS4CP HEADWORK SHROUD CHROME	815028	5013866057045	01/01/1900	To Current	££10.69
4	HKS4CP HEADWORK SHROUD CHROME	815028	5013866057045	01/01/1900	To Current	££10.69

5						
Spare Key	Description	Code	Barcode	Date From	Date To	Price (£) ex VAT
5	SL7 PLASTIC SLEEVE	815029	5013866057052	01/01/1900	To Current	££3.52
5	SL7 PLASTIC SLEEVE	815029	5013866057052	01/01/1900	To Current	££3.52

6						
Spare Key	Description	Code	Barcode	Date From	Date To	Price (£) ex VAT
6	OR19 O RING	815016	5013866057007	01/01/1900	To Current	££1.94
6	OR19 O RING	815016	5013866057007	01/01/1900	To Current	££1.94

7						
Spare Key	Description	Code	Barcode	Date From	Date To	Price (£) ex VAT
7	OR20 O RING	815030	5013866057069	01/01/1900	To Current	££2.53
7	OR20 O RING	815030	5013866057069	01/01/1900	To Current	££2.53

8						
Spare Key	Description	Code	Barcode	Date From	Date To	Price (£) ex VAT
8	OR21 O RING	815031	5013866057076	01/01/1900	To Current	££2.26
8	OR21 O RING	815031	5013866057076	01/01/1900	To Current	££2.26

9						
Spare Key	Description	Code	Barcode	Date From	Date To	Price (£) ex VAT
9	HKH16CP COMPLETE S.C. HEADWORK HOT	815005	5013866056918	01/01/1900	To Current	££105.51
9	HKC16CP COMPLETE S.C. HEADWORK COLD	815006	5013866056925	01/01/1900	To Current	££105.51

10						
Spare Key	Description	Code	Barcode	Date From	Date To	Price (£) ex VAT
10	HK38 COMPLETE SELF CLOSING CARTRIDGE	815011	5013866056956	01/01/1900	To Current	££43.46
10	HK38 COMPLETE SELF CLOSING CARTRIDGE	815011	5013866056956	01/01/1900	To Current	££43.46
11						
Spare Key	Description	Code	Barcode	Date From	Date To	Price (£) ex VAT
11	VW14 VALVE WASHER	815012	5013866056963	01/01/1900	To Current	££2.37
11	VW14 VALVE WASHER	815012	5013866056963	01/01/1900	To Current	££2.37
12						
Spare Key	Description	Code	Barcode	Date From	Date To	Price (£) ex VAT
12	VW15 VALVE WASHER	815013	5013866056970	01/01/1900	To Current	££2.37
12	VW15 VALVE WASHER	815013	5013866056970	01/01/1900	To Current	££2.37
13						
Spare Key	Description	Code	Barcode	Date From	Date To	Price (£) ex VAT
13	BPV BYEPASS VALVE	815015	5013866056994	01/01/1900	To Current	££3.52
13	BPV BYEPASS VALVE	815015	5013866056994	01/01/1900	To Current	££3.52
14						
Spare Key	Description	Code	Barcode	Date From	Date To	Price (£) ex VAT
14	SP1 SPRING	815014	5013866056987	01/01/1900	To Current	££3.52
14	SP1 SPRING	815014	5013866056987	01/01/1900	To Current	££3.52
15						
Spare Key	Description	Code	Barcode	Date From	Date To	Price (£) ex VAT
15	ARW2 1/2 ANTI ROTATIONAL WASHER	814162	5013866056758	01/01/1900	To Current	££1.51
15	ARW2 1/2 ANTI ROTATIONAL WASHER	814162	5013866056758	01/01/1900	To Current	££1.51
16						
Spare Key	Description	Code	Barcode	Date From	Date To	Price (£) ex VAT
16	1/2 BN 915 BACKNUT	817071	5013866023354	01/01/1900	To Current	££2.53
16	1/2 BN 915 BACKNUT	817071	5013866023354	01/01/1900	To Current	££2.53
17						
Spare Key	Description	Code	Barcode	Date From	Date To	Price (£) ex VAT
17	SD7 SPINDLE ASSEMBLY	850633	5013866061738	01/01/1900	To Current	££9.14
17	SD7 SPINDLE ASSEMBLY	850633	5013866061738	01/01/1900	To Current	££9.14

To save time and money important

REMEMBER when fixing Performa Spring Taps...

* Do not dismantle before fixing

Each tap is water tested and in perfect working order before despatch from the Pegler factory and is **self-adjusting** for any pressure up to 100lb. per sq. in.

In the case of pattern 873 do not dismantle the cylinder with its finely machined internal components but merely connect this part to the tap tail.

* Clean pipes are essential

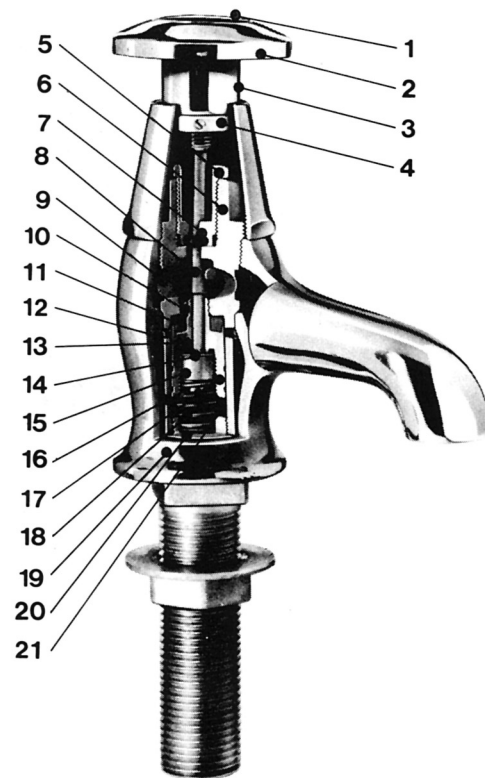
Flush out grit, dirt, hemp, etc. from pipes **before** fixing (especially on new work) so as to keep the main washer clean and undamaged and the inlet and outlet clear of obstruction.

* Run tap after fixing

Allow the Performa tap to run free for a few minutes to clear away any further foreign matter remaining in the pipes.

* Water flow adjustment

Where a combination of a high water pressure and a small basin requires a smaller flow of water, this is obtained by regulating the depression of the valve. A nut for this purpose is fitted under the button to give up or down movement, greater or less opening. When desired flow is obtained, the regulating nut is locked in position by a small grub-screw.



- 1 Red 'H', Blue 'C' index
- 2 Metal button
- 3 Guide
- 4 Flow control regulator
- 5 Gland nut
- 6 Head integral with cylinder
- 7 'O' ring seal
- 8 Spindle
- 9 Outlet ports
- 10 Ring holding main washer
- 11 Main washer
- 12 Inlet ports
- 13 By-pass valve seating
- 14 By-pass valve washer
- 15 By-pass valve
- 16 Cylinder
- 17 Piston
- 18 Return Spring
- 19 Body
- 20 Cylinder cap
- 21 Chamber

maintenance procedures

dismantling

- 1 Loosen grub-screw in underside of push button.
- 2 Lift button clear. Unscrew easy-clean cover to expose head fitting.
- 3 Unscrew head fitting from body.
Note: Isolate basin from turning movement by locking metal bar between tap nose and neck.
4. Holding head-fitting hexagon, unscrew bottom cylinder cap.
Note: Don't hold or apply pressure to cylindrical parts, they are precision machined and can be easily damaged.
5. Remove cylinder cap and withdraw piston spring, by-pass valve and piston. If piston seizes, tap end of spindle to free it.
6. Washers - main and secondary - are of one pattern for 'hot' and 'cold' and fit all 1/2" Bib, Stop or Pillar taps.

The above instructions generally apply to all the other patterns of 'Perfoma' Spring taps.

cleaning and washer replacement

After dismantling the Performa tap, clean the main and secondary washers (see that no grit, etc. is embedded in them), and to renew the main washer first of all unscrew the holding ring. Ensure that the inlet and outlet ports are clean. If the piston should require cleaning, use a very little amount of good quality metal polish as indicated below. Files, emery or other coarse abrasives must **not** be used. A piece of softwood 5/8 in diameter can be used to engage the internal thread of the piston, then apply a little polish and move the piston backwards and forwards a few times in the cylinder. Do not overdo, as the piston and its cylinder are machined to fine limits, and if this clearance between them is affected the non-concussive properties of the tap will be impaired.

Wipe all parts clean and dry and reassemble in the reverse order to dismantling. Make sure the cylinder cap is tight and also that the joint between the headwork and the body is absolutely tight (otherwise the tap will drip).

Unlike most other spring taps 'Performa' taps are full bore.

For long, reliable, noiseless service - cutting water and fuel costs

Rugged, tamper-proof design - ideal for public places

Approved by all major water authorities

All 1/2" Performa Spring Taps have standard internal components

how **Performa** spring taps work

Design eliminates 'Water Hammer'

When button top is depressed the by-pass valve is opened first, allowing the water in the chamber to be expelled by the lowering of the piston. This downward movement of the piston opens the main valve, allowing water to flow through the tap by way of the inlet and outlet ports. Immediately the button top is released, the above operation is reversed. The by-pass valve is closed by the pressure of the return spring which also raises the piston with its main washer. The piston, however, can only close as quickly as water is allowed to flow into the chamber through the small clearance between piston and cylinder. The delaying action ensures that the returning main valve closes gently and eliminates any concussion or water-hammer.



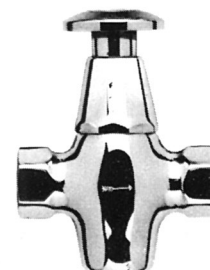
873 Deck Spring Tap ½ in



876 Pillar Spring Tap ½ in



880 Bib-type Spring Tap ½ in



884 Spring Stop Tap ½ in

instructions and specification details for **Performa** non- concussive* spring tap range

*Patented



Head office:

Pegler Limited, St. Catherine's Avenue,
Doncaster DN4 8DF
Tel: 01302 560560 Fax: 01302 367661
Telex: 547166 Beldon G

Export Sales:

Pegler Limited International,
St. Catherine's Avenue,
Doncaster DN4 8DF England
Tel: 01302 855656 Fax: 01302 730513
Telex: 547166 Beldon G

Sales Office:

Pegler Limited, PO Box 182, St. Catherine's
Avenue, Doncaster DN4 8DN

North:

Tel: 01302 329777 Fax: 01302 560108

Midlands & South West:

Tel: 01302 739393 Fax: 01302 560109

South:

Tel: 01302 739494 Fax: 01302 560458