

NW86 “Novus” Drinking Fountain

INSTRUCTIONS ON FIXING AND MAINTENANCE

FIXING

A union should be used in connecting the service pipe to inlet of fountain. This will facilitate removal of fountain for repair if necessary. A control stop cock should be inserted in the service at the nearest convenient point. A draining cock fitted at the lowest point between fountain and control stop cock will enable the fountain to be drained in severe weather. Before connecting service pipe to fountain it is important to thoroughly flush through.

REGULATING

The fountain valve is regulated to suit 40 lbs. pressure before leaving works. If it is found necessary to vary this on site proceed as follows:

Insert a small screwdriver in jet aperture, regulating screw (4) located inside can then be adjusted. When adjusting jet start with control stop cock only slightly open, do not open the stop cock further unless adequate jet throw cannot be obtained by means of regulating screw (4). Opening stop cock full and reducing jet throw by means of screw (4) will put excessive pressure on packing of spring valve.

PIPE HAMMER

If this occurs the supply pipe must be disconnected from fountain and regulating screw (21) should then be screwed right home to seating and then turned back approx. one quarter turn.

MAINTENANCE

It will be found quicker and easier to disconnect and remove fountain from wall to carry out any repairs to the valve or fittings. To remove valve from fountain proceed as follows:

Unscrew lock-nut (29) as far down push rod as possible, screw plunger (27) down push rod until it clears toggle housing (26), push rod (28) can then be removed, remove backnut securing valve in fountain, disconnect capnut on valve outlet, control valve can then be removed from fountain. When re-assembling a clearance of $\frac{1}{32}$ " must be allowed between top face of plunger (27) and bottom face of toggle lever (24), and push rod (28) must be free to rotate, otherwise valve will not close properly.

GENERAL INFORMATION

If the fountain is not drained during severe frost it may be found that washer (15) has spread, this acts as a safety valve and prevents damage to valve body. This washer must then be renewed.

When fitting replacement parts it is essential that only the correct parts be used, these can be obtained from us.

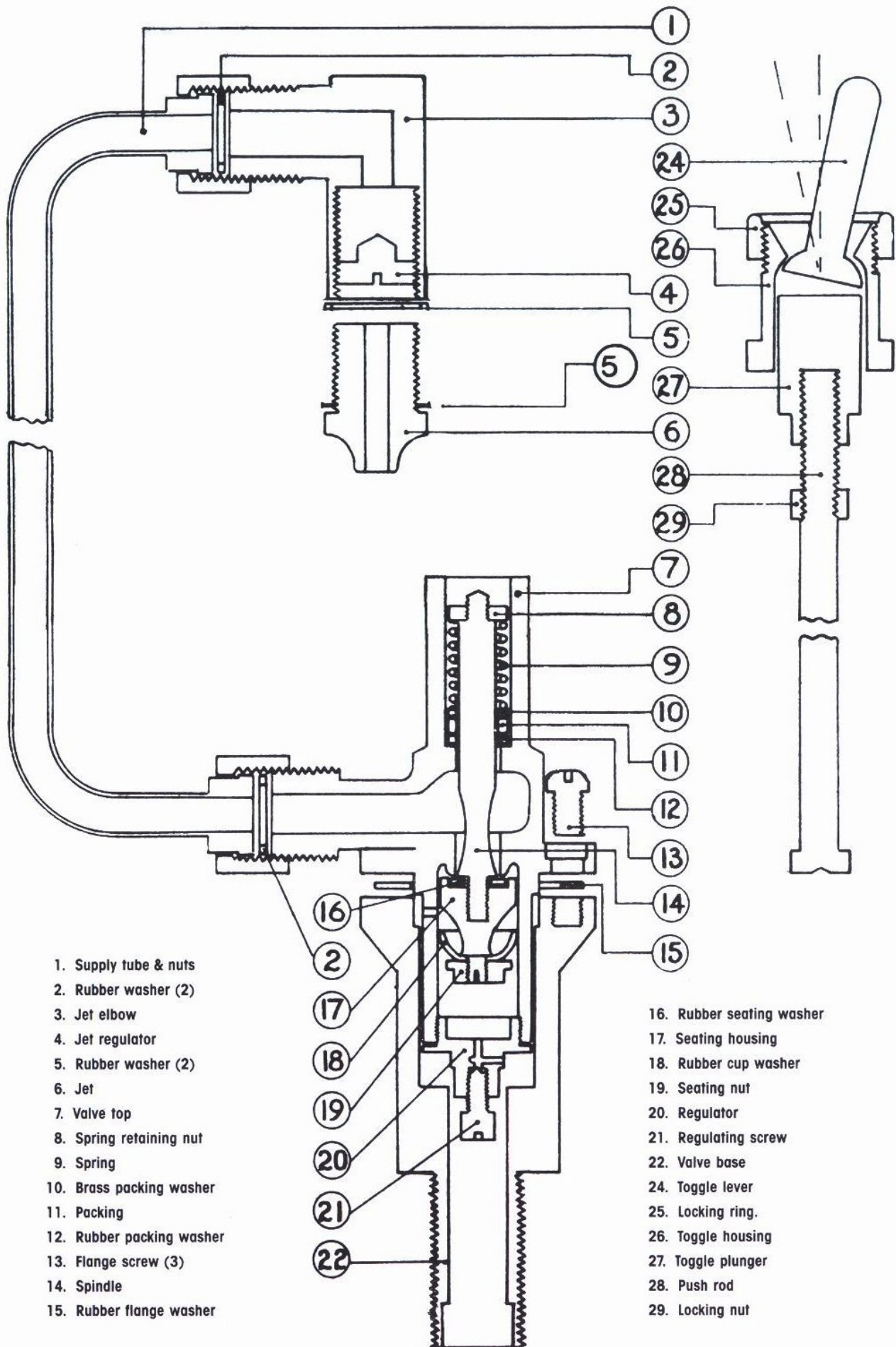
Please contact us should you require further advice or information on the fixing or maintenance of the fountain.

ABRASIVE CLEANERS SHOULD NOT BE USED.

H&B HARRIS & BAILEY LTD 50 HASTINGS RD CROYDON SURREY H&B

📞 020 8654 3181 📞 020 8656 9369 📧 mail@harris-bailey.co.uk

PLEASE LEAVE THIS CARD INSIDE FOUNTAIN



- 1. Supply tube & nuts
- 2. Rubber washer (2)
- 3. Jet elbow
- 4. Jet regulator
- 5. Rubber washer (2)
- 6. Jet
- 7. Valve top
- 8. Spring retaining nut
- 9. Spring
- 10. Brass packing washer
- 11. Packing
- 12. Rubber packing washer
- 13. Flange screw (3)
- 14. Spindle
- 15. Rubber flange washer

- 16. Rubber seating washer
- 17. Seating housing
- 18. Rubber cup washer
- 19. Seating nut
- 20. Regulator
- 21. Regulating screw
- 22. Valve base
- 24. Toggle lever
- 25. Locking ring.
- 26. Toggle housing
- 27. Toggle plunger
- 28. Push rod
- 29. Locking nut