

Press Release – 11 August 2015

THE
HEPWORTH
WAKEFIELD

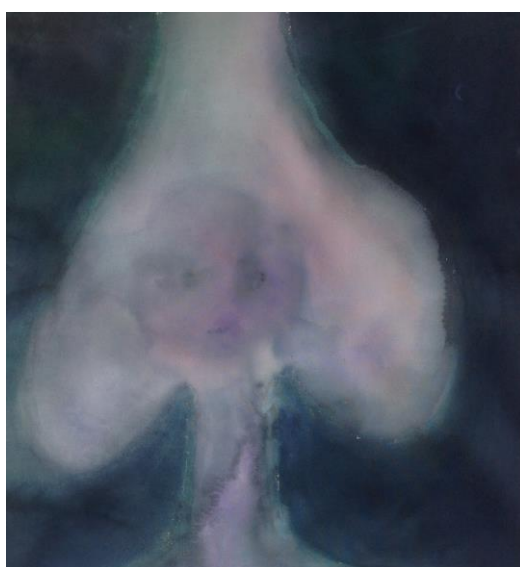
ENRICO DAVID



THE HEPWORTH WAKEFIELD PRESENTS THE ARTIST'S FIRST UK SOLO EXHIBITION
AT AN INSTITUTION IN EIGHT YEARS, PLUS NEWLY COMMISSIONED SCULPTURE



Enrico David, *Tools and Toys III*, 2014. Jesmonite, graphite, copper. Copyright the artist. Michael Werner Gallery, New York and London.



Enrico David, *Fontanelle IV*, 2014. Acrylic on canvas. Copyright the artist. Michael Werner Gallery, New York and London.



Enrico David, *The Assumption of Weee*, 2014. Jesmonite, graphite. Copyright the artist. Michael Werner Gallery, New York and London.

ENRICO DAVID

13 NOVEMBER 2015 – 24 JANUARY 2016

"From show to show, you never quite know where Enrico David is going to land, but it's almost always in the vicinity of figures of a mystical or fantastical sort." Roberta Smith, *The New York Times*

The Hepworth Wakefield presents a new exhibition by Enrico David, introducing recent works, plus a new series of sculptures specially commissioned for The Hepworth Wakefield. Featuring over 20 works created in the past year two years, this is the artist's first solo show at an institution in the UK since his exhibition at the ICA in 2007 and his Turner Prize nomination in 2009.

David's work encompasses painting, sculpture, textiles and installation with the act of drawing being key to his exploration of form. Mining a space between figuration and abstraction, the artist consistently returns to the body as a point of departure, exploring the human figure as a metaphor for transformation.

David's interest in British and European modern sculpture has come to the fore in his work of the past two years, exploring affinities with the work of Barbara Hepworth, Henry Moore and Alberto Giacometti among others, whilst at the same time retaining an idiosyncratic aesthetic language which remains purposefully varied and full of provocative ambiguity.

For this new exhibition, the artist has created several new works which will be installed in the light-filled, David Chipperfield-designed gallery spaces at The Hepworth Wakefield. Cast in bronze, fibreglass and jesmonite, these large human figures assume various poses, many relying on the building's architecture for support – hugging the floor, leaning against walls or suspended from the ceiling and floating in space. The sense of metamorphosis that pervades their forms through allusions to cocoons or chrysalis-like forms lends these new works a close affinity with the natural world. This suggestion of continual change is further emphasised by David's manipulation of materials, the final works often being the result of a sequence of modelling and casting processes that divert our understanding of their material truth.

The exhibition also features a series of recent smaller sculptures, produced over the last two years, which stay close to the scale of the drawings on which they are based, pulling viewers in to their more intimately-scaled details. Installed so as to punctuate the installation of the more monumental works, the works will occupy the galleries like elements populating a landscape, each occupying their own space while engaging in dialogue across a shared environment.

David's exhibition opens alongside a new exhibition of the work of British modernist artist Gertrude Hermes, with both artists exploring a critical dialogue between drawing and sculpture.

BIOGRAPHY: ENRICO DAVID

Enrico David was born in Ancona, Italy and currently lives and works in London. For nearly two decades he has exhibited his work throughout Europe and the United States. In 2013 David presented a major installation of paintings and sculptures in *The Encyclopedic Palace*, curated by Massimiliano Gioni for the Venice Biennale. Solo museum exhibitions include UCLA Hammer Museum, Los Angeles (2013); *Head Gas*, New Museum, New York (2012); *Repertorio Ornamentale*, Fondazione Bevilacqua La Masa, Venice (2011); *How Do You Love Dzzzzt by Mammy?*, Museum f M Gegenwartskunst, Basel (2009); *Bulbous Marauder*, Seattle Art Museum (2008); and *Ultra Paste*, ICA London (2007). In 2013 he had a solo exhibition at Michael Werner, London. David was nominated for the Turner Prize in 2009.

ENDS

EXHIBITION FACTS

Press Preview: 11 November 2015

Title: Enrico David

Dates: 13 November 2015 – 24 January 2016

Address: The Hepworth Wakefield, Gallery Walk, Wakefield, West Yorkshire, WF1 5AW

Telephone: +44 (0)1924 247360

Admission: Free

Website: www.hepworthwakefield.org

Email: hello@hepworthwakefield.org

Opening Hours: 10am - 5pm Tuesday – Sunday
10am - 9pm Third Thursday of the month
Closed Mondays (except local school holidays and bank holidays)

Travel: By Train: the nearest stations are Wakefield Westgate and Kirkgate
By Car: the gallery is situated off the A61, with nearby links to the M1 motorway. A pay & display visitor car park is located on Thornes Lane, WF1 5QJ, with free blue badge car parking on site
By Bus: the gallery is situated on main bus routes and the FreeCityBus route (Mon-Sat, 9.30am-3pm)
By Bicycle: bicycle racks are located by our main entrance
By Air: the nearest airport is LeedsBradford

Polite Request: The gallery should be cited in full, as The Hepworth Wakefield

Twitter: @HepworthGallery

Facebook: TheHepworthWakefield

Instagram: HepworthWakefield

MEDIA ENQUIRIES:

For further details, interview requests and photo opportunities please contact in the first instance:

Kara Reaney, Pelham Communications

+44 20 8969 3959

kara@pelhamcommunications.com

Rachel Guthrie, Pelham Communications

+44 20 8969 3959

rachel@pelhamcommunications.com

IMAGE CREDITS (L-R):

Enrico David, *Tools and Toys III*, 2014. Jesmonite, graphite, copper, from an edition of 5 + 2 Aps, 23 ¼ x 20 ½ x 3 inches, 56 x 52 x 8 cm, copyright the artist. Michael Werner Gallery, New York and London.

Enrico David, *Fontanelle IV*, 2014. Acrylic on canvas, 33 ½ x 31 ½ inches, 85 x 80 cm, copyright the artist. Michael Werner Gallery, New York and London.

Enrico David, *The Assumption of Weee*, 2014. Jesmonite, graphite, from an edition of 5 + 2 Aps, 19 ¾ x 11 x 4 inches, 50 x 28 x 10.5 cm, copyright the artist. Michael Werner Gallery, New York and London.

IMAGE REQUESTS:

High resolution images are available from the Media Centre: www.hepworthwakefield.org/press

All images are provided courtesy of The Hepworth Wakefield and must be reproduced with full and correct captions and credits as provided. For further assistance with images or credits contact:

laurenfox@hepworthwakefield.org

EDITOR'S NOTES:

THE HEPWORTH WAKEFIELD

The gallery is at the heart of Wakefield's regeneration. Designed by the internationally acclaimed practice, David Chipperfield Architects, it is funded by Wakefield Council and Arts Council England and an increasing number of charitable trusts, private individuals, Patrons and Members. The gallery opened on 21 May 2011 and welcomed its millionth visitor on 5 December 2013.

THE CALDER

The Calder is The Hepworth Wakefield's new contemporary art space which opened to the public on 30 August 2013. Located on the ground floor of a 19th century former textiles mill, the new contemporary art space is situated adjacent to the main gallery site, on the banks of the River Calder. The Calder adds 600 square metres of exhibition and event space to the existing 10 gallery spaces within The Hepworth Wakefield and presents a mixed programme of art, music and events that runs in parallel to the visitor offer at the main gallery.

The Calder, Gallery Walk, West Yorkshire, WF1 5AW

Free admission (except for ticketed events)

Open Tuesday – Sunday, 12 – 4.30pm

Open Third Thursday of every month, 12 – 8.30pm, as part of After Hours late nights

Open for the Wakefield Art on Wednesdays every other month, 12 - 8.30pm

Closed Mondays (except for Bank Holidays and school holidays)

www.hepworthwakefield.org

01924 247360

Twitter: @HepworthGallery #TheCalder

Instagram: [instagram.com/thecalder](https://www.instagram.com/thecalder)

YORKSHIRE SCULPTURE TRIANGLE

The Hepworth Wakefield, Yorkshire Sculpture Park, Henry Moore Institute and Leeds Art Gallery are four of the UK's leading visual art organisations, situated within 30 minutes' drive or train ride from one another. They build on West Yorkshire's unique artistic legacy as the birthplace of two of the most important 20th Century artists, Barbara Hepworth and Henry Moore.

This long-term partnership works to promote contemporary art and sculpture in inspirational settings to grow visitor numbers for all four institutions and to raise the profile of West Yorkshire as a major centre for the appreciation and study of sculpture.

For details on Yorkshire Sculpture Triangle:

Visit www.ysculpture.com

Follow: @Ysculpture and #Ysculpture

Like: www.facebook.com/YorkshireSculptureTriangle

END OF ALL