

ALINA SZAPOCZNIKOW: HUMAN LANDSCAPES  
21 October 2017 - 28 January 2018

THE  
HEPWORTH  
WAKEFIELD



The artist with her work *Naga [Naked]*, 1961  
© ADAGP, Paris 2017  
The Alina Szapocznikow Archive / Piotr Stanislawski  
/ National Museum in Krakow  
Photograph Marek Holzman, courtesy the Museum of  
Modern Art, Warsaw.



Alina Szapocznikow  
*Monstrum II [Monster II]*, 1957  
Lead and metal construction  
© ADAGP, Paris 2017. Courtesy The Estate of  
Alina Szapocznikow / Piotr Stanislawski / Galerie  
Loevenbruck, Paris. Photo Fabrice Gousset.

ALINA SZAPOCZNIKOW: HUMAN LANDSCAPES  
21 October 2017 - 28 January 2018

THE  
HEPWORTH  
WAKEFIELD



Alina Szapocznikow  
*Autoportrait I*, 1966  
Marble, polyester resin  
Private collection  
© ADAGP, Paris 2017. Courtesy The Estate of  
Alina Szapocznikow / Piotr Stanislawski / Galerie  
Loevenbruck, Paris. Photo Fabrice Gousset.



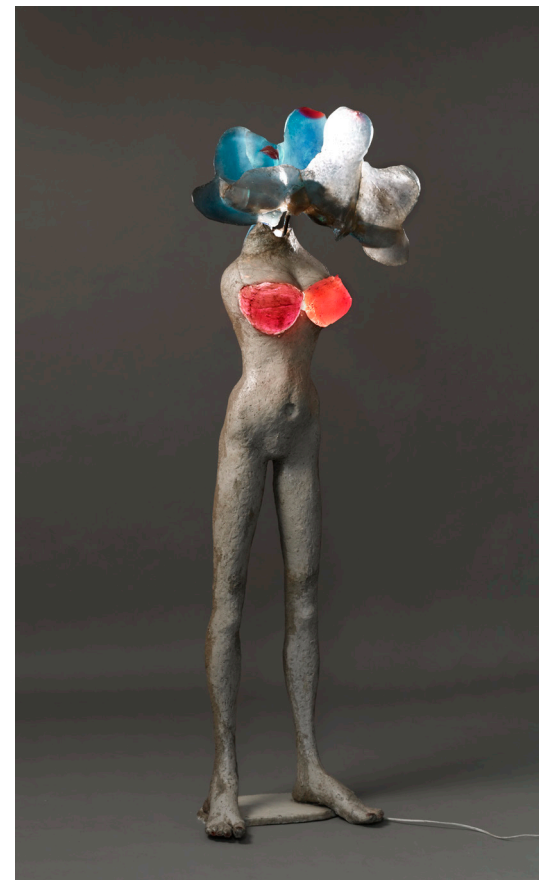
Alina Szapocznikow  
*Lampe-Bouche [Illuminated Lips]*, 1966  
Coloured polyester resin, electrical wiring and metal  
© ADAGP, Paris 2017. Courtesy The Estate of Alina  
Szapocznikow / Piotr Stanislawski / Galerie Loevenbruck,  
Paris. Photo Fabrice Gousset.

ALINA SZAPOCZNIKOW: HUMAN LANDSCAPES  
21 October 2017 - 28 January 2018

THE  
HEPWORTH  
WAKEFIELD



Alina Szapocznikow  
Bouquet II, 1966  
Plaster, plastic foil, coloured polyester resin, metal. Courtesy Muzeum Sztuki, Łódź. © ADAGP, Paris 2017. Courtesy The Estate of Alina Szapocznikow / Piotr Stanislawski / Galerie Loevenbruck, Paris.



Alina Szapocznikow  
Illuminated Woman, 1966-1967  
Private collection © ADAGP, Paris 2017.  
Courtesy The Estate of Alina Szapocznikow / Piotr Stanislawski / Galerie Loevenbruck, Paris. Photo Fabrice Gousset.



ALINA SZAPOCZNIKOW: HUMAN LANDSCAPES  
21 October 2017 - 28 January 2018

THE  
HEPWORTH  
WAKEFIELD



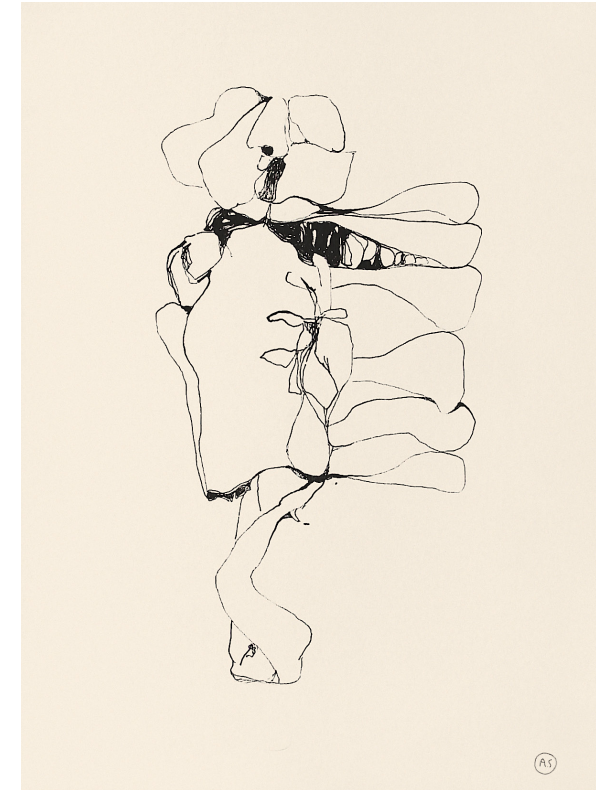
Alina Szapocznikow,  
*Self-portrait - Herbarium*, 1971  
Polyester and polychrome wood  
Grażyna Kulczyk Collection. Courtesy The Estate  
of Alina Szapocznikow / Piotr Stanislawski /  
Galerie Loevenbruck, Paris. Photograph Bartek  
Buśko.



Alina Szapocznikow  
*Cendrier de Célibataire I* [*The Bachelor's Ashtray I*], 1972  
Coloured polyester resin and cigarette butts  
Private collection  
© ADAGP, Paris 2017. Courtesy The Estate of Alina  
Szapocznikow / Piotr Stanislawski / Galerie Loevenbruck, Paris.  
Photo Fabrice Gousset.

ALINA SZAPOCZNIKOW: HUMAN LANDSCAPES  
21 October 2017 - 28 January 2018

THE  
HEPWORTH  
WAKEFIELD



Alina Szapocznikow  
Untitled, ca. 1959 -1960  
Ink on laid paper 13 1/8 x 9 5/8 in Courtesy The  
Estate of Alina Szapocznikow / Piotr Stanis-  
lawski / Galerie Loevenbruck, Paris © ADAGP,  
Paris 2017. Photo: Fabrice Gousset.

Alina Szapocznikow  
Bust-Length Figure of a Woman, Headless 2, ca.  
1971  
Felt-tip on paper perforated along the left edge  
32 x 23,4 cm Private collection © ADAGP,  
Paris 2017. Courtesy The Estate of Alina  
Szapocznikow / Piotr Stanislawski / Galerie  
Loevenbruck, Paris. Photo Fabrice Gousset.

Alina Szapocznikow  
Untitled, ca. 1970-1971  
63 x 48 cm © ADAGP, Paris 2017. Courte-  
sy The Estate of Alina Szapocznikow / Piotr  
Stanislawski / Galerie Loevenbruck, Paris. All  
rights reserved.

ALINA SZAPOCZNIKOW: HUMAN LANDSCAPES  
21 October 2017 - 28 January 2018

THE  
HEPWORTH  
WAKEFIELD

TERMS AND CONDITIONS OF USE FOR PRESS

Permission to reproduce the images is granted solely for use in conjunction with media coverage and review of the exhibition "ALINA SZAPOCZNIKOW: HUMAN LANDSCAPES" at The Hepworth Wakefield from 21 October 2017 – 28 January 2018 and that all reproductions must be accompanied by the credits listed.

Any digital reproductions including but not limited to websites and the internet shall be low resolution with a resolution no greater than 72 dpi. The images shall not be available for download.

Permission is for use in the context of the article only, no cover use is permitted without prior authorization. The right to reproduce and distribute hereby granted is strictly limited to only the below described images, and to only the above- described period, and any further uses are strictly prohibited.

There is to be no cropping, bleeding, cutting into, overlaying or altering of the images in any way.