



ESTABLISH IN SWEDEN

A COLLABORATION BETWEEN SÖDERHAMN MUNICIPALITY
AND PROPERTY OWNERS IN SÖDERHAMN

VÄRMLANDSVÄGEN, SÖDERHAMN



A COLLABORATION BETWEEN SÖDERHAMN MUNICIPALITY
AND PROPERTY OWNERS IN SÖDERHAMN



VÄRMLANDSVÄGEN, SÖDERHAMN

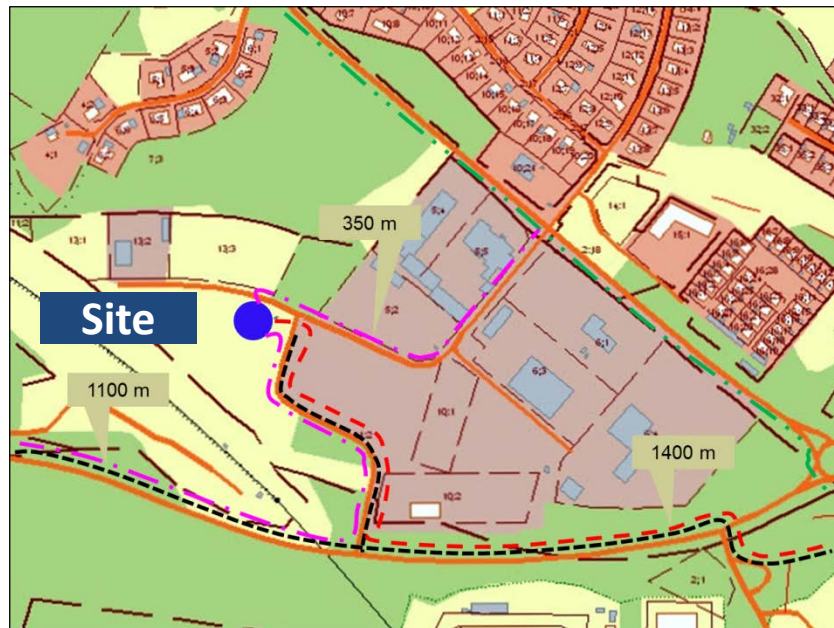
OWNER	Municipality of Söderhamn
LOCATION	Söderhamn, country of Gävleborg, 240 km (2 hour by train) north of Stockholm. Coordinates WGS 84 decimal (lat, lon):61.29324, 17.06016
SITE CHARACTERISTICS	Partly developed land zoned for industrial use Total area 10 000 m ² + 7 500 m ² , buildable area 5 000 m ² + 3 750 m ²
CLIMATE	Average temperature per year 5°C. Average number of days per year with max temperature >25°C is 11
POWER	Phase I: Load to site 8-10 MW within 6 months from order. Building a new substation close to the site and locate 10kV-cables from existing main substation, about 1 400m
CONNECTIVITY	Redundant dark fiber from two different directions 1 100 m and 800m from site. Fiber providers is Söderhamn NÄRA AB
COOLING	By air



VÄRMLANDSVÄGEN, SÖDERHAMN

Power & Fiber infrastructure

Fiber & Power phase I, 8-10MW



- Power grid 10 kV
- - - - - New feeders to substation and site, redundant
- New substation
- . - . - Black fiber grid
- . - . - New fiber connection to site

A COLLABORATION BETWEEN SÖDERHAMN MUNICIPALITY
AND PROPERTY OWNERS IN SÖDERHAMN

