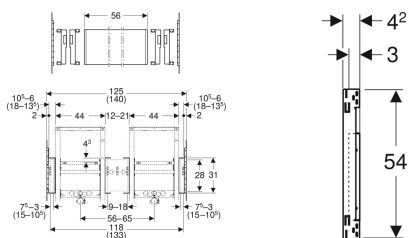


Geberit Duofix mounting plate for washbasin with cabinet and two outlet taps



Example image



Application purposes

- For drywall construction
- For installation in part-height prewall installations
- For installation in room-height installation walls
- For installation in part or room-height Geberit Duofix system walls
- For fastening between 2 Geberit Duofix elements for washbasin and studs
- For fastening washbasins with cabinet
- For use with 2 outlet taps

Characteristics

- Width adapted to Geberit ONE washbasins with cabinets

Scope of delivery

- Mounting plate
- 6 fixing brackets

To order additionally

- Fastening material for washbasin (if the positions of the fastening screws are on the mounting plates)

- Width adapted to Geberit Duofix crossbars for element fastening, for stud clearance from 60 cm (120–135 cm)
- Mounting plate can be cut to element width and position
- Can be divided into three smaller mounting plates
- Mounting plate made of veneered wood, waterproof bonded
- Building material class B2 in accordance with DIN 4102-1, resp. class D-s2, d0 in accordance with DIN EN 13501-3
- Formaldehyde release class A in accordance with EN 1084, resp. Class E 1 according to EN 13936

Technical data

Product material | Wood

- Fastening material

Art. no.	Nominal width	B	H	T	
111.056.00.1	120–135 cm	56 cm	31 cm	3 cm	New

Accessories

- Geberit Duofix crossbar for frame fastening, for stud clearance from 60 cm
- Geberit Duofix fastening for central drain between two elements for washbasin



- The dimension specifications relate to the installation of two elements for washbasin with width 44 cm
- The possible nominal widths of 120 cm and (135 cm) are provided separately in the dimension specifications. The dimension specifications for the part widths relate to the room-height installation situations combined with the crossbar for element fastening.