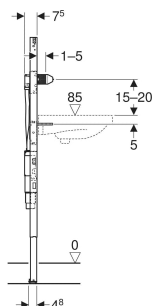
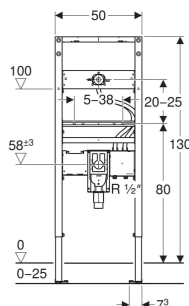


Geberit Duofix element for washbasin, 130 cm, electronic wall-mounted tap with concealed function box, with concealed trap



APPLICATION PURPOSES

- For metal and wood frame walls
- For Geberit Duofix system walls
- For installation in part- or room-height prewalls
- For installation in room-height partition walls
- Suitable for less-abled installation
- For floor constructions 0–25 cm
- For installation of washbasins
- For Piave and Brenta washbasin taps, wall-mounted, with concealed function box

CHARACTERISTICS

- 2025 range
- Statically self-supporting frame, protected against corrosion with powder coating
- With pull-out plate for lateral fastening above the element on metal or wood profiles or on Geberit Duofix system studs
- Alternative fastening point for wall anchors
- Rotating foot plates, suitable for installation in U profiles UW 50 and UW 75

- Foot plates that can be mounted in Geberit Duofix system rail without tools, without additional components
- Galvanised non-slip leg supports protected against corrosion
- Fastening distance for washbasin 5–38 cm
- Threaded rods adjustable in depth with 18 or 28 cm fastening distance
- Tap crossbar height-adjustable
- Premounted fastening for wall-mounted tap
- Concealed trap with optimum flow guidance and high self-cleaning effect
- Concealed trap can be height-adjusted ± 3 cm during final installation
- In-wall cabinet with straight connector made of PP, $\varnothing 50$ mm
- Water supply connection compatible with MasterFix and MeplaFix
- Water supply connection on the bottom of concealed housing
- Fastening for connection bend, height-adjustable and sound-absorbing
- Concealed housing for Geberit washbasin tap, wall-mounted, for concealed function box, premounted
- Premounted connection pipes between concealed housing and fastening for wall-mounted tap
- Shut-off unit integrated in the concealed housing

- Terminal for electrical connection in concealed housing

TECHNICAL DATA

| | |
|------------------|-------|
| Product material | Steel |
|------------------|-------|

SCOPE OF DELIVERY

- 2 wall anchors
- Protection box
- Protection box with cover, for concealed housing
- Protection box for fastening of wall-mounted tap
- Fastening material

ACCESSORIES

- Geberit Duofix set of wall anchors for single installation, corner construction
- Geberit Duofix set of wall anchor extensions
- Geberit Duofix system fastening bracket
- Geberit Duofix fastening material for stud clearance 50–57.5 cm
- Geberit Duofix set of foot fastener on rear wall
- Geberit Duofix set of foot extensions 20 cm length
- Geberit sound insulation set for washbasin

| Art. no. | B cm | H cm | T cm | |
|---------------------|---------|---------|---------|--|
| 111.568.00.2 New | 50 | 130 | 7.4 | |

New article available from 01.05.2025