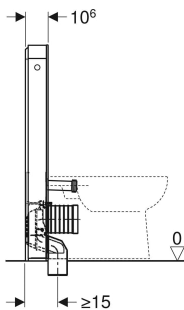
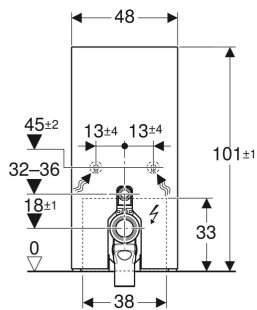


Geberit Monolith Plus sanitary module for floor-standing WC, 101 cm, front cladding made of glass



Example image



APPLICATION PURPOSES

- For floor inlets
- For renovations, conversions and new buildings
- For wall inlets with an inlet height of 18 cm
- For floor-standing WCs with P-bend and water inlet height 32–36 cm above the floor (EN 33)
- For replacing low-level exposed cisterns
- For replacing floor-standing WCs with close-coupled exposed cistern
- For connecting Geberit AquaClean Tuma WC complete solution, floor-standing WC
- For connecting Geberit AquaClean WC enhancement solutions, with accessories
- For mounting on finished floors
- For installation in front of drywalls or solid walls

CHARACTERISTICS

- Dual flush
- Soft-touch buttons for flush actuation
- Settings can only be changed with the Geberit Home App
- User detection range can be set
- Odour extraction with ceramic honey comb filter can be activated
- Odour extraction unit with run-on function

- Ceramic honeycomb filter for odour neutralisation can be replaced without tools
- Adjustable interval flush
- With ComfortLight
- Lighting mood infinitely adjustable from orientation light to daylight
- Light colour continuously adjustable from warm white to cool white
- DALI-compatible control
- Operation with extra-low voltage, no mains voltage in cistern
- Mains connection with flexible three-core sheathed cable
- Water supply connection on the bottom
- Water supply connection on the left/right possible with accessories
- Compensation of dimensional tolerances possible
- Cistern, fully insulated against condensation
- Side cladding made of aluminium brushed
- Self-supporting

TECHNICAL DATA

Protection degree	IPX4
Nominal voltage	100–240 V AC
Operating voltage	12 V DC
Mains frequency	50–60 Hz

Power consumption standby max.	0.5 W
Flow pressure	0.1–10 bar
Operating temperature, water max.	25 °C
Flush volume, factory setting	6 / 3 l
Flush volume large, adjustment range	4–6 l
Flush volume small	3 l
Light colour	2200–4000 K

SCOPE OF DELIVERY

- Water supply connection set with 2 angle stop valves, 1/2"
- Flush bend extension 160 mm
- Sleeve made of EPDM, ø 44 / 55 mm
- Connection bend made of PP, ø 90 mm
- Adaptor socket made of PE-HD, ø 90 / 110 mm
- Female socket for mains connection
- Power supply unit
- Base cover
- Fastening material for drywall
- Fastening material

ACCESSORIES

- Conversion set for Geberit AquaClean WC enhancement solutions
- Lateral water supply connection set for Geberit Monolith sanitary module for WC
- Geberit outlet mounting box
- Interface module 12 V for Geberit AquaClean Mera/Sela

Art. no.	Colour / surface	B cm	H cm	T cm	Protection class	Power consumption W
131.202.JK.7	Front cladding: lava glass Side cladding: black chrome aluminium	48	101	10.6	I	15
131.202.JL.7	Front cladding: sand grey glass Side cladding: aluminium	48	101	10.6	I	15
131.202.SI.7	Front cladding: white glass Side cladding: aluminium	48	101	10.6	I	15
131.202.SJ.7	Front cladding: black glass Side cladding: black chrome aluminium	48	101	10.6	I	15