

CM500W

COMPASS WALL MOUNTED UNIT

TAVISTOCK

FURNITURE AFTERCARE INSTRUCTIONS

Before You Start

- The product should only be installed by a suitably qualified bathroom installer.
- Check the contents of the pack for defects before installation. The supplier will not accept any refitting costs if faulty product has been fitted.
- The furniture should only be installed in a well ventilated bathroom at a distance from bath / showers to avoid splashing. It should also be protected from any shower / handset spray by a shower screen or similar.
- Make sure the unit and basin are secured to a suitably strong / reinforced wall to ensure stability.

Caution

- Take care when using power tools near water - the use of a residual current device (RCD) is recommended.
- Beware of hidden pipes or cables.
- Wear suitable eye protection when drilling.
- Take care when drilling tiled surfaces as the drill might slip. We recommend using a piece of masking tape to prevent the drill from wandering.

Aftercare

Do ✓

- Wipe away any water splashes or condensation after use. Excessive exposure to water or sitting water will damage the furniture.
- Clean with a soft damp cloth with a mild detergent only. Surface should then be fully dried using a soft lint free cloth.
- A suitable limescale remover can be used on the BASIN ONLY if required but MUST be tested on an inconspicuous area of the basin.

Don't ✗

- Scrub or scour any part of the furniture or basin.
- Use furniture polish.
- Use abrasive or bleaching cleaning agents.
- Allow hot or sharp objects to contact the furniture or basin.

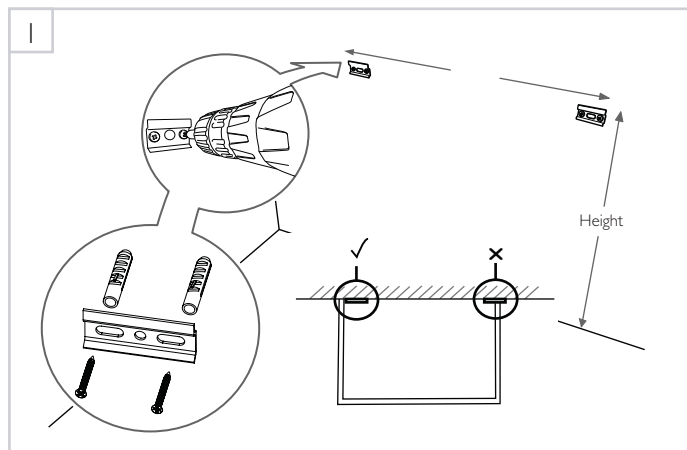
CM500W

COMPASS WALL MOUNTED UNIT

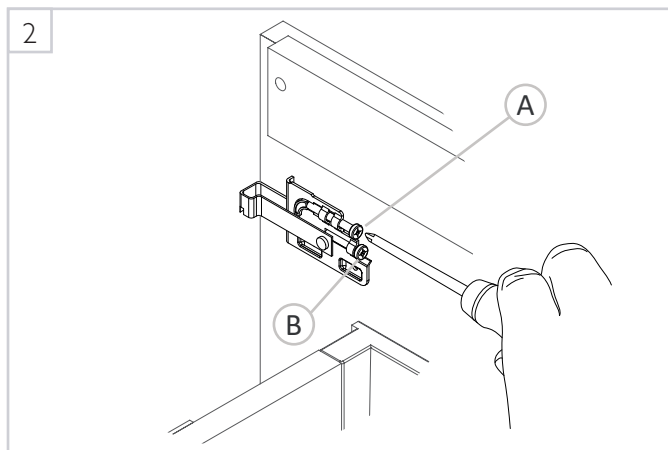
TAVISTOCK

WALL MOUNTING INSTRUCTIONS

WARNING in order to prevent falling down this product must be used with the wall attachment device provided.



Mark the location of each of the wall mounting plates ensuring that they are positioned inside the side walls of the unit. For each mounting plate drill two holes in the marked positions to a suitable depth.



Remove the cover cap from the hangers.

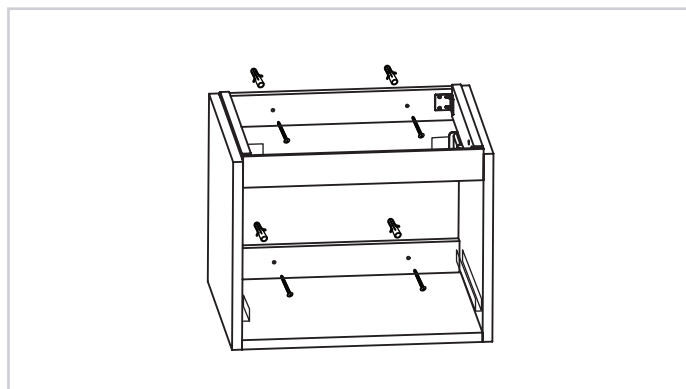
Locate the unit and hangers onto the wall mounting plates.

First, level the unit using up/down adjustment by turning screw A. Then, tighten the unit against the wall by turning screw B.

Replace cover cap when complete.

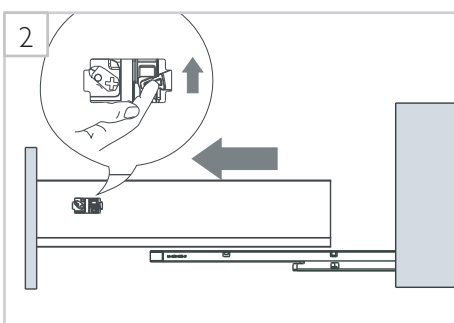
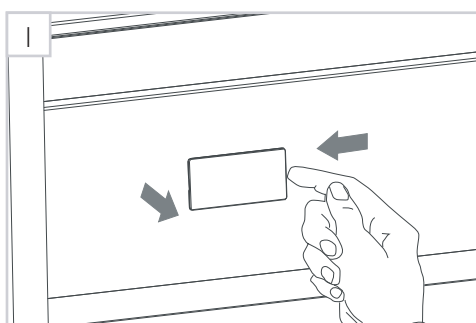
SECURING TO THE WALL - WALL MOUNTED UNITS

IMPORTANT: Unit must be screwed to wall via brace as a secondary fix after using hangers. Please secure to wall using suitable wall plugs and screws (not provided).



DRAWER REMOVAL AND FASCIA ADJUSTMENT

To remove drawer



CM500W

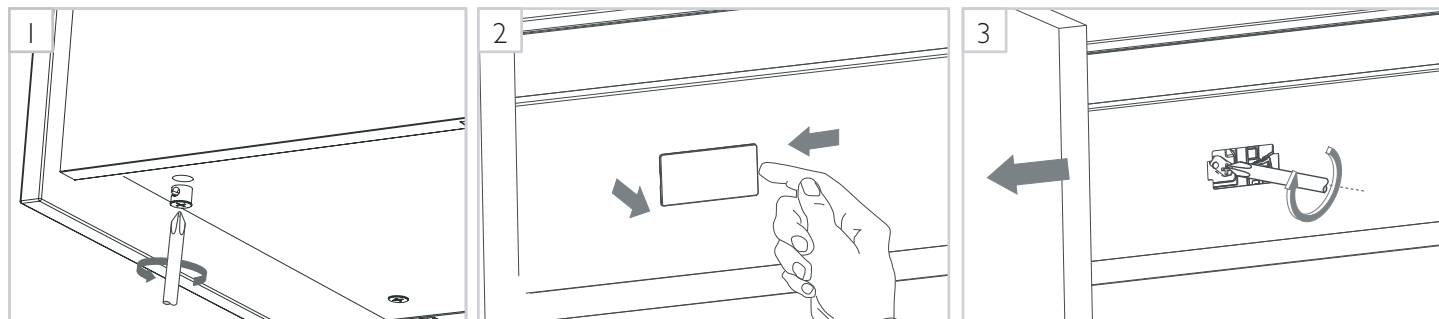
COMPASS WALL MOUNTED UNIT

TAVISTOCK

DRAWER REMOVAL AND FASCIA ADJUSTMENT CONTINUED

To remove fascia

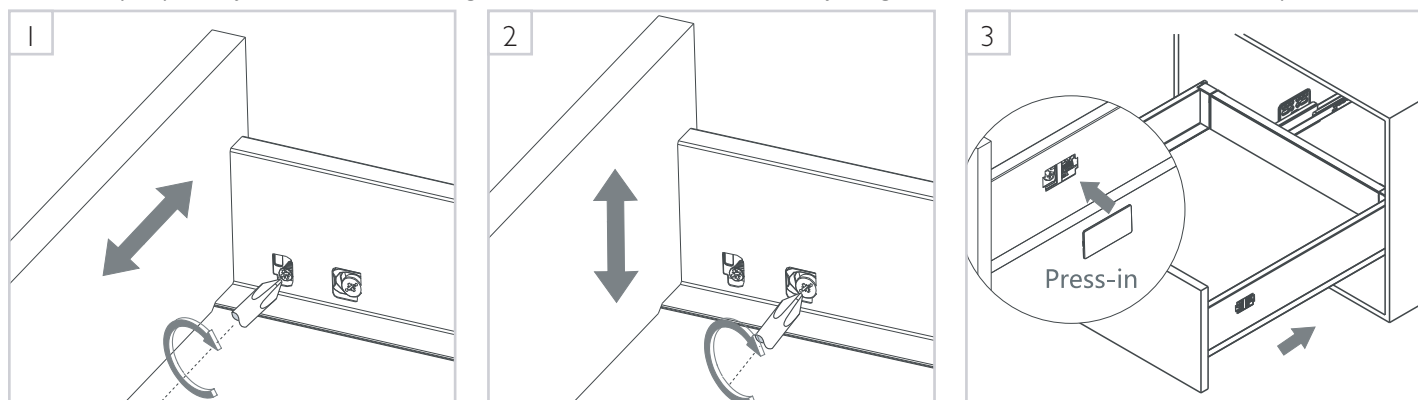
If damaged, the drawer fascia can be removed and replaced by uncovering the mechanism on the outside of the drawer side.



Ensure to release CAM Bolt on bottom face of drawer before releasing using mechanism. Do so by turning CAM head anti-clockwise to loosen.

To adjust fascia

Fascias may require adjustment for correct alignment. This is achieved with the adjusting mechanisms under the interior covercap.



DRAWER ADJUSTMENT - SUPPORT RAILS (FOR BOTTOM DRAWERS ONLY)

Adjusting tilt of fascia.

1. Slide shroud back
2. Turn finger screw in end of rail to desired position:
(Do not remove rail from fascia)

3. Tilt direction shown below:

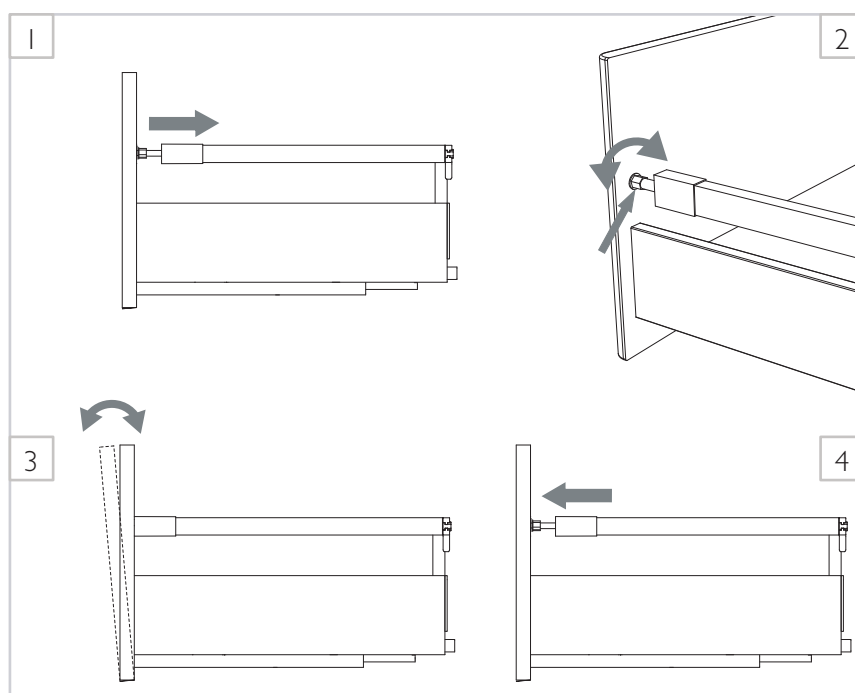
Clockwise to tilt forward



Anti clockwise to pull back



4. After adjustment has been made, replace the shroud.



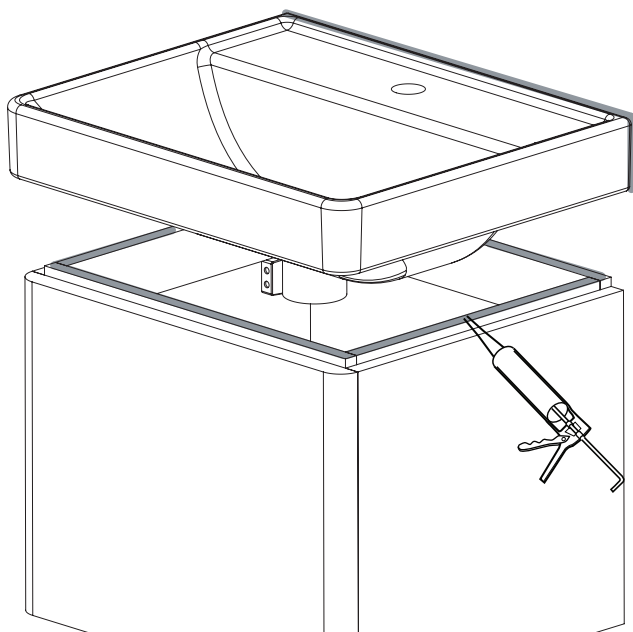
CM500W

COMPASS WALL MOUNTED UNIT

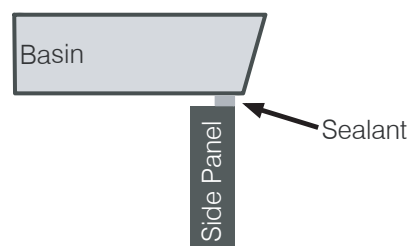
TAVISTOCK

BASIN FITTING INSTRUCTIONS

Note: Product shown is a CM500W Compass Wall Mounted Unit.



- Once the basin is plumbed in, finish by securing to the washstand or wall with a silicone sealant (not supplied). This creates a water tight seal and prevents damage.
- Ensure silicone / sealant sits on outer edge of furniture to prevent any water pooling, see below diagram for positioning.



FITTING HANDLES

- Pilot holes on back face of door are positioned for the handle(s) included with furniture unit. Other handle options may require different drilling depending on spacing and intended location of handle.
- If alternative handles are used please measure carefully before drilling.
- Carefully drill any holes using a clamped non-abrasive block of wood to protect the front of door (as per image below).
- Fix handle in positioning using screws supplied.

