

Tools Required (not supplied)



Drill



8mm Masonry Drill



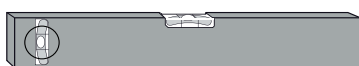
2.75mm HSS Drill Bit



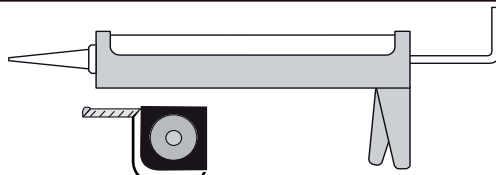
Pencil



PH2 Screwdriver

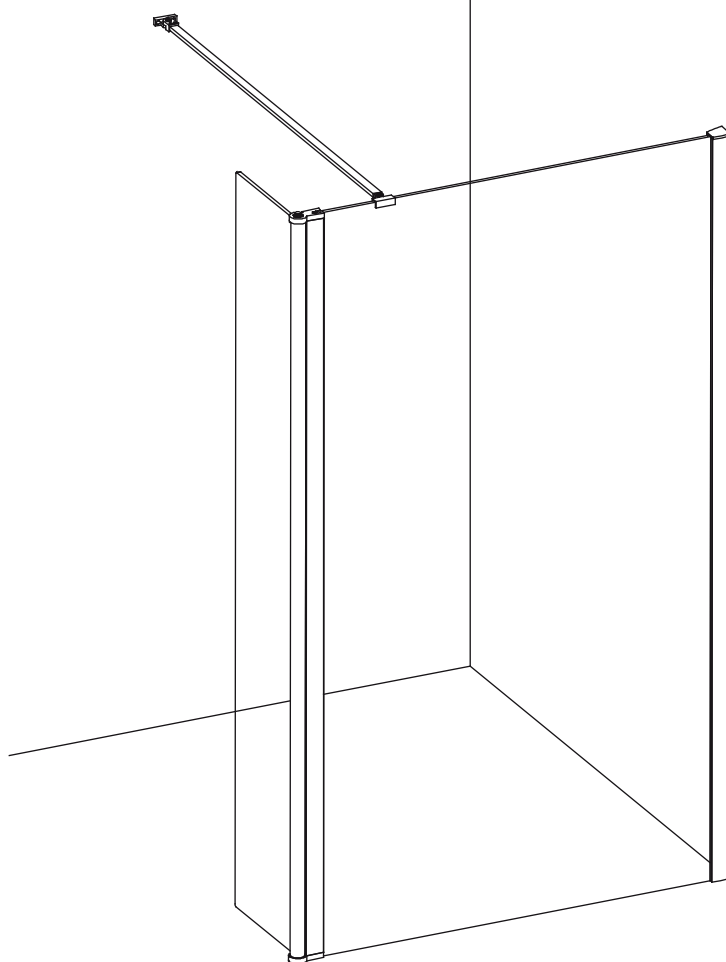


Spirit level



Tape Measure

Sealant &
Sealant Gun



ASSEMBLY INSTRUCTIONS IMPORTANT PLEASE READ

The screen can be constructed either way up, for left or right hand opening.

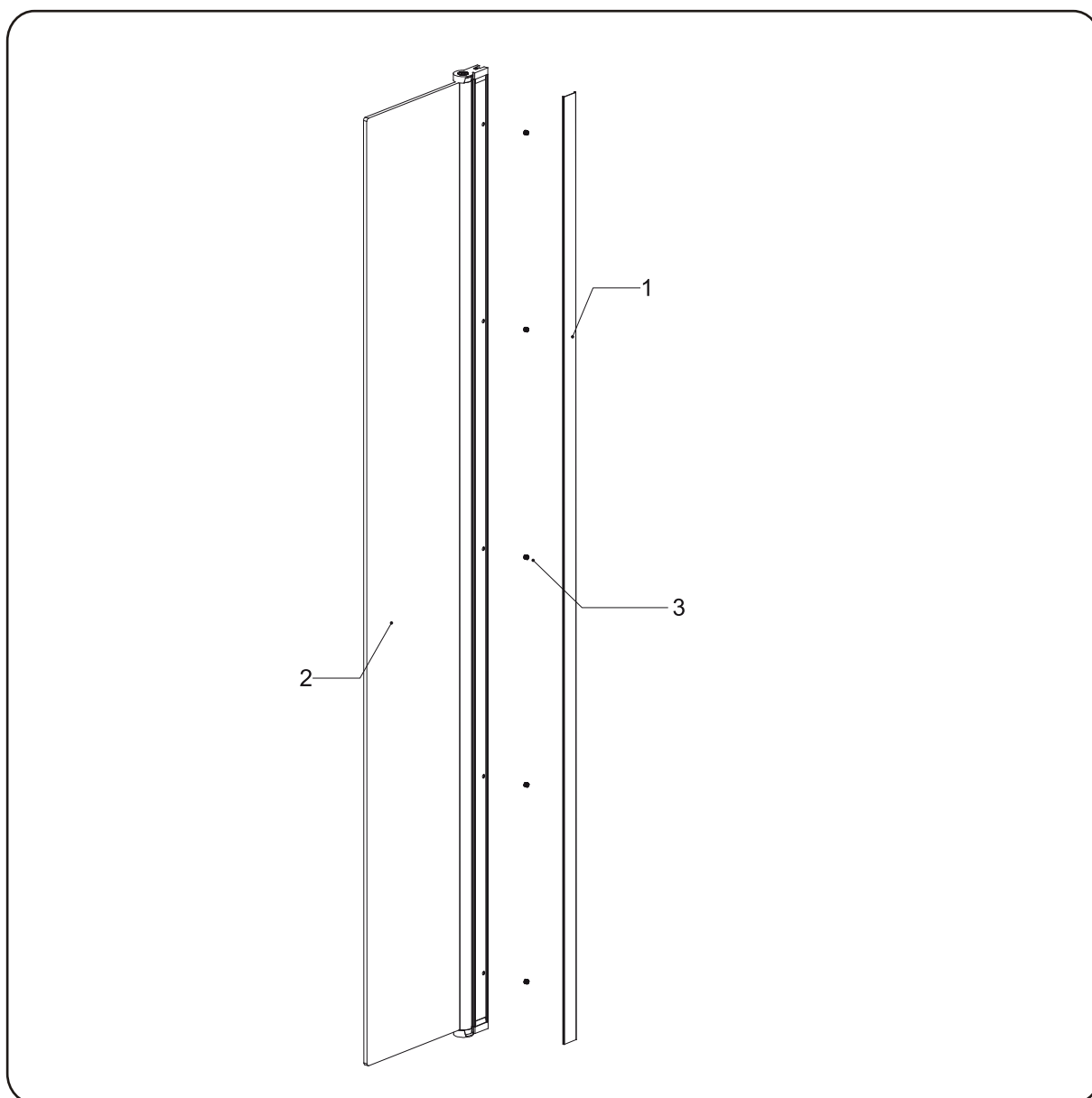
These instructions and list of parts assume that installation is done against solid/tiled walls. Hollow or stud partition walls will require alternative fixings. Please consult with a reputable, qualified trades person.

Please check this product for damage prior to starting the installation. No claims can be made after the product has been fitted.

Please note the minimum and maximum adjustment sizes noted on the product brochures are based on perfectly plumb walls and trays.

IMPORTANT: If you are at all unsure of any part of the instructions shown in this document we recommend that you contact a reputable qualified trades person.

PLEASE ENSURE THAT YOUR SHOWER TRAY IS LEVEL AND INSTALLED CORRECTLY AND FULLY TO THE TILES PRIOR TO FITTING OF THE ENCLOSURE.



Box Contents

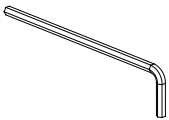
SN	Code	Descript on	Qty
1	ID2PF009	Cover Strip	1
2	ID2GS045	Return Panel	1
3	APTL012	Grub Screw M8 10	5

Note: Further part details for fixing kit available on page 2

FIXING KIT

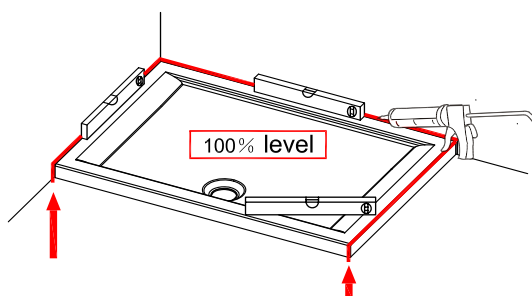


M8 Socket Set Screw
With Rubber Tip × 2



5/32 Allen Key × 1

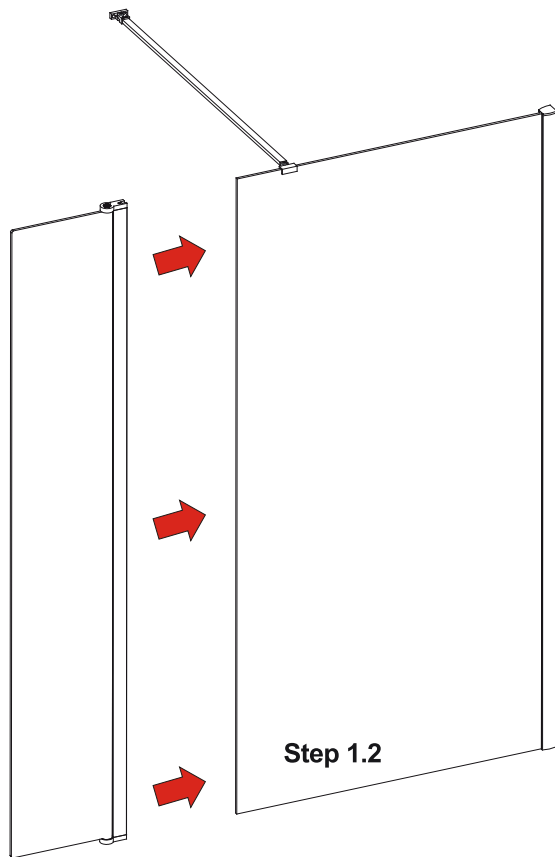
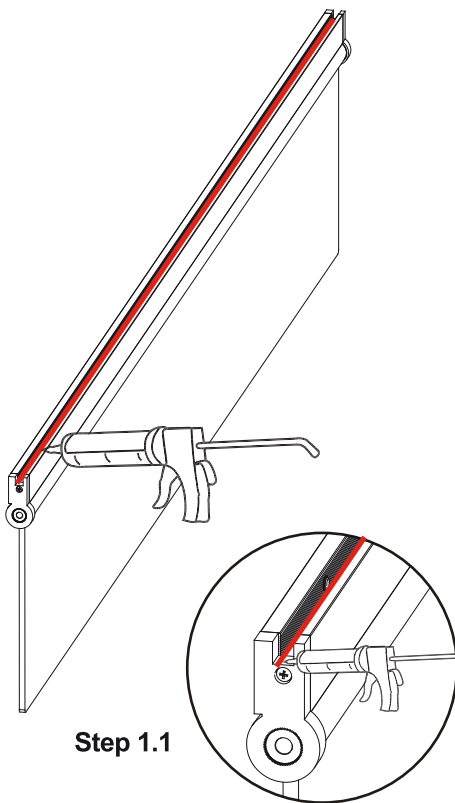
PROCEDURE



TRAY MUST BE 100% LEVEL IN ALL DIRECTIONS

Ensure the shower tray is level in all directions and is properly sealed to the wall. The wall must be tiled down to the top edge of the tray. **Do not angle out bottom tile.**

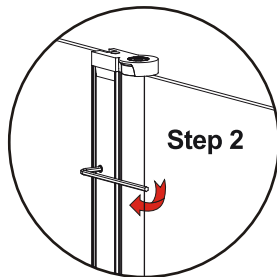
TRAY MUST BE SEALED FULLY AROUND WHERE THE TRAY MEETS THE WALL.



Step 1.

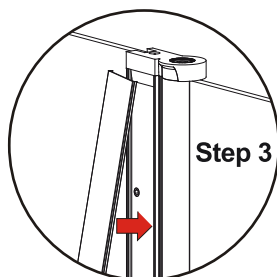
1.1 Put enough silicone into the groove of the upright profile as shown.

1.2 Push the inline panel to the Wetroom glass panel.



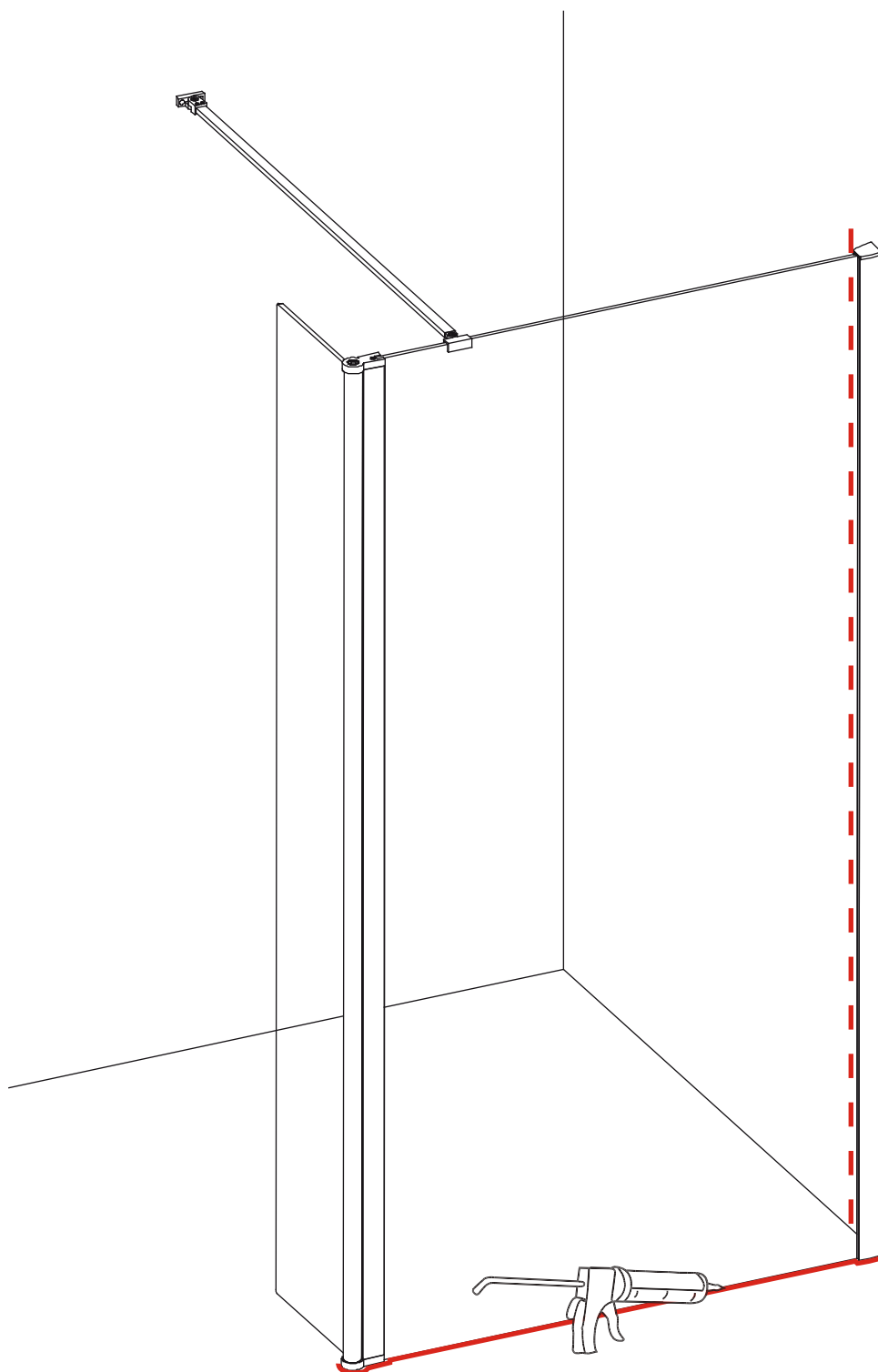
Step 2.

Tighten the M8 socket set screws (**No.3**) using the 5/32 alloy key.



Step 3.

Once you are happy that the installation is correct, push the cover strip profile (**No.1**) into the upright profile.

**24 HRS**

**DO NOT USE THE
ENCLOSURE FOR
24 HOURS AFTER
SEALING**

Applying Silicone Sealant

Sealing Inside

Seal from the top of the wall profile to the bottom on the **INSIDE** between the wall profile and the wall.

IMPORTANT: Do not apply sealant on inside of the tray.

Sealing Outside

Seal from the top of the wall profile to the bottom between the wall profile and tiles on both sides. Also seal along the bottom where the frame meets the tray. Seal the joints between the bottom profile and any upright profiles.

AFTERCARE

Cleaning Instructions

It is important to clean your Spring shower enclosure after every use. Please wipe down all glass and metal parts with a clean soft cloth. Ensure that all residual water on the glass is removed after every use.

Usage

For reliable, watertight performance from your Spring enclosure your shower head should not be positioned so that the shower sprays directly onto the enclosure door. Failure to comply with this may cause the shower to leak. Outward opening doors may cause water to drip onto the floor, please ensure that the floor covering immediately outside the enclosure will not be affected by water.



This product has been treated with Spring Easy Clean glass treatment, a protective barrier which creates a 'non-stick' surface on your glass, helping to resist lime scale build up and water spots.

Aftercare

Spring Easy Clean glass can be cleaned with any suitable nonabrasive glass cleaner - with PH value of between 3-11; the coating will not be damaged. Avoid surfactants and heavily perfumed products. Vinegar and water based products are very effective. Do not use abrasive scrubbing cleaners or equipment for cleaning.

essential

BATHROOMS

Ideal Bathrooms
Omega House
Bradbourne Drive
Tilbrook
Milton Keynes
MK7 8AT

Tel : 0800 634 2600
Fax : 0800 634 2700
Website : <http://www.essentialfromideal.com/>

ideal
BATHROOMS