

Technical Data Sheet

essential

1600 x 700mm Steel Bath with Grip Holes - No Anti-Slip BATHROOMS

ESB006

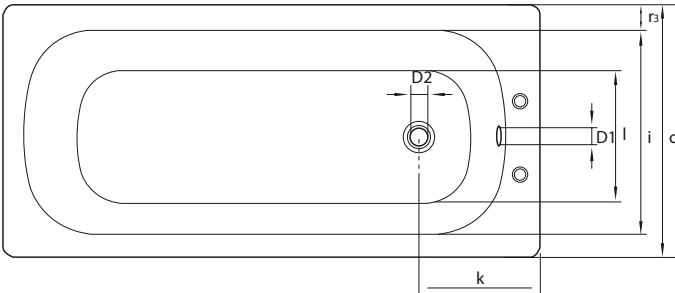


ESB006

SIZE	1600 x 700mm
TAPHOLES	2TH

Horizontal distance between the axis of the drain and the axis of the overflow	a	280
Angle of the contact cone / Angle of the contact cone	alfa	100°
Slope of the pool measured at the level and on the support surface D4	beta	12°
External length	b	1600
External length	c	700
Overflow hole diameter	D1	51
Drain hole diameter	D2	54
Contact diameter of the control template	D3	70
Diameter of the flat support surface for the gasket	D4	81
Diameter of the free volume around the overflow	D5	91
Diameter of the flat surface intended to receive the sealing gasket in the internal part of the tub	D6	66
Height between the contact diameter of the control template and the surface of the tub	e	2
Internal length (bottom)	g	1060
Vertical distance between the axis of the overflow and the underside of the drain	H	330
Height between the floor and the underside	h1	130/210
Height of the clamping of the drains	h2	6
Height of the free volume around the overflow intended for the installation of the latter	h4	90
Internal width (top)	i	550
Internal width (bottom)	l	380
Height from the edge	m	30
Depth	p/p1	390/367
Height with feet	pT	540/620
Distance between the top edge and the center of the overflow hole	j	65
Distance between the edge of the bath and the center of the overflow hole	k	290
Edge width	r1/ r2/ r3	100/50/70
Thickness of the material at the drain hole	s	5

• View from above



• Front view along side

