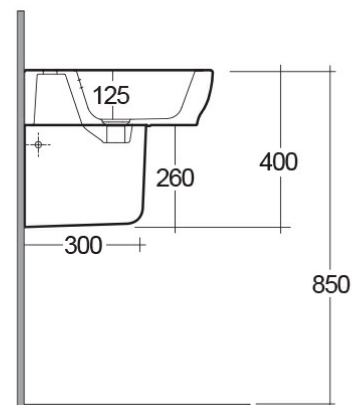
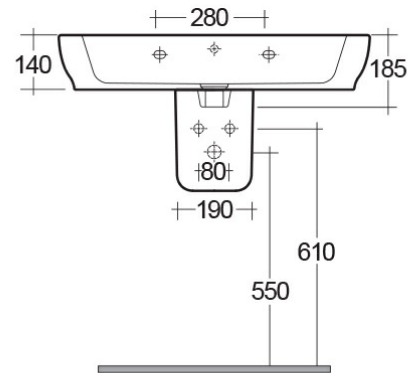
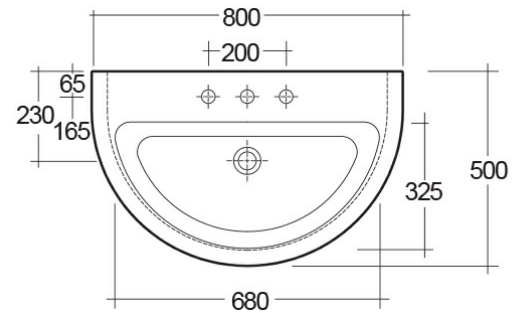


RAK-MOON

Wash basin | Half Pedestal

RAK
CERAMICS



Technical specifications

Dimensions: 800 x 500 mm

Weight: 27 Kg

Color: Alpine White

Shape of basin: Oval

Overflow hole: yes

Suites: [RAK-MOON](#)

Code	Name
HAR0103AWHA	MOON HALF PEDESTAL
HAR102AWHA	MOON WASH BASIN 80CM

Dimensions: All dimensions in mm tolerance $\pm 5\%$ for below 200mm and $\pm 3\%$ for above 200mm.

Note: Due to a continuing development programme to improve design and performance, the manufacturer reserves all rights to vary specifications without prior information.

Please note accessories are for photographic use only.