

MOON

MOON RIMLESS Wall Hung Pan with hidden fixations

RAK
CERAMICS



SPECIFICATION/CODE REFERENCE

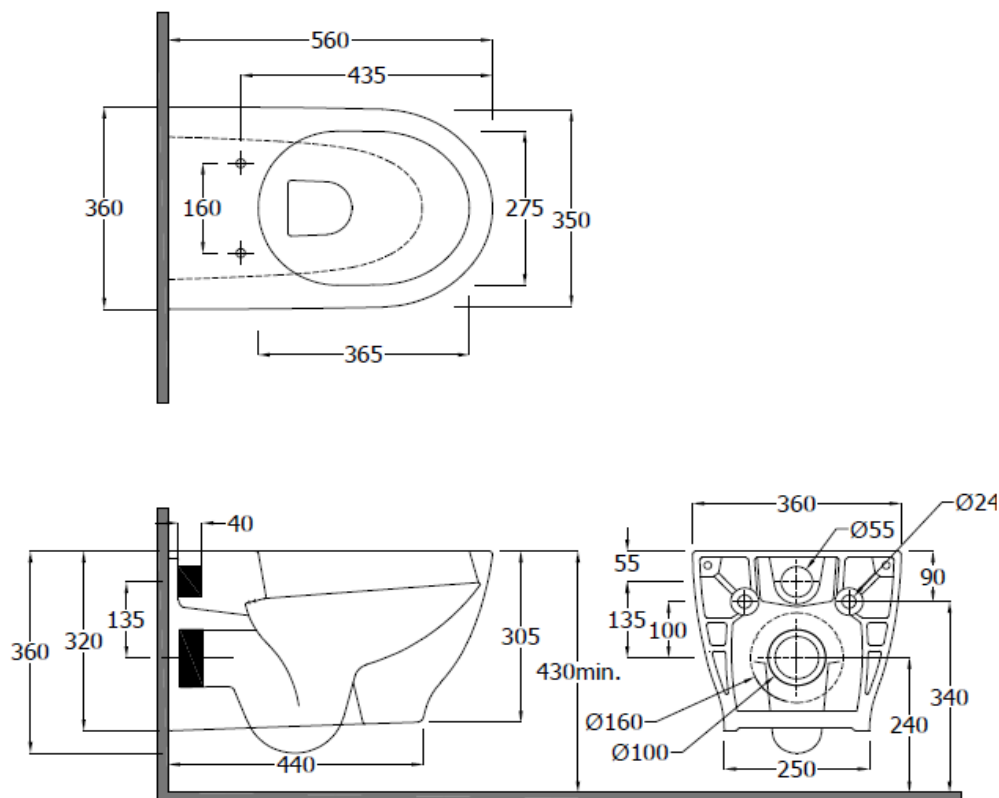
Please use the reference codes shown below:

HARWHPAN-HF HARSEATSC

ISO 9001
ISO 14001
BUREAU VERITAS
Certification



| | |
|-----------|---|
| SIZE | 550 x 350 x 360 mm |
| TRAP | P Trap |
| SEAT | Quick Release hinges |
| APPROVALS | BS 3402: 1969 |
| MATERIAL | Vitreous china |
| WEIGHT | 32.50 kg |
| COLOURS | White |
| FIXING | Hidden Fixation Supplied |
| WARRANTY | 25 Years on Ceramics and 2 Years on WC Seat |



Dimensions: All measurements are in millimeters and are subject to normal manufacturing variations.

Note: Due to a continuing development programme to improve design and performance, the manufacturer reserves all rights to vary specifications without prior informations. Please note accessories are for photographic use only.

Tel: 01730 237850 Fax: 01730 263210. RAK Ceramics, Bradford House, Frenchmans Road, Petersfield, Hampshire GU32 3AW

Contact us at: info.uk@rakceramics.com / Visit us at: www.rakceramics.com 2017