

# doc.m value pack plus

thermostatically protected via external blending valve



Doc.M value pack plus blue grab rails and seat.  
Right hand installation shown.

## to specify/order:

Please use the product reference shown below.

### Doc.M value pack plus

Left hand with blue grab rails & seat

**PK8255BE**

Right hand with blue grab rails & seat

**PK8355BE**

### comprising components

Avalon HO pan

Doc.M value cistern, fittings & standard lever - 6 litre flush

Avalon seat ring, stainless steel bar hinge, top fix and stability buffers

Alcona 360 Handrinse basin, 1 Tap

Sequential lever action mixer tap with flexi tails

Mixing valve - thermostatic TMV3 (SF1037XX)

4 x 600mm grab rails concealed fixings

1 x 450mm grab rail concealed fixings

1 x Hinged support rail and toilet roll holder concealed fixings

Pan fixings, cistern cover clip

Grid waste

### note

Basin traps to be ordered separately.

The products included in the set and the layout details are in accordance with those laid down in the Building Regulations Approved Document M 2015.

### approvals

LABC certificate, ref: Pending

WRAS Approved, TMV3



### material

Vitreous china.

Grab rails in powder coated aluminium.

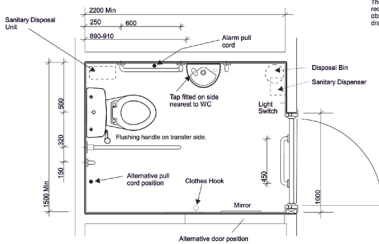
### colours

Vitreous china in white only.

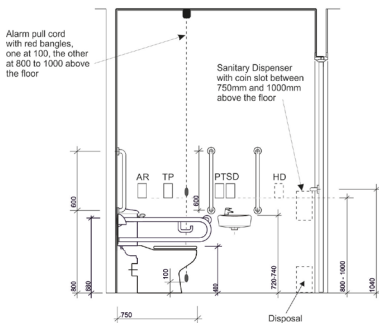
Rails and seat in blue.

Blue BE

(Blue RAL 5011, Luminance Value 6)



The area shown is the minimum required. It must be clear of all obstructions for plumbing and drainage fittings.



AR: Alarm Reset Button  
TP: Toilet Paper Dispenser  
PT: Paper Towel Dispenser  
SD: Soap Dispenser  
HD: Possible position for Automatic Hand Dryer

The drawing above shows a Left Hand installation. A Right Hand installation is the mirror image of above.

All measurements shown are in millimetres.  
Drawing sizes are not to scale.



Hotels



Healthcare



Education



Commercial



Less Able

# Twyford

Geberit Group

221