

Pneumatic Dual Flush Plate

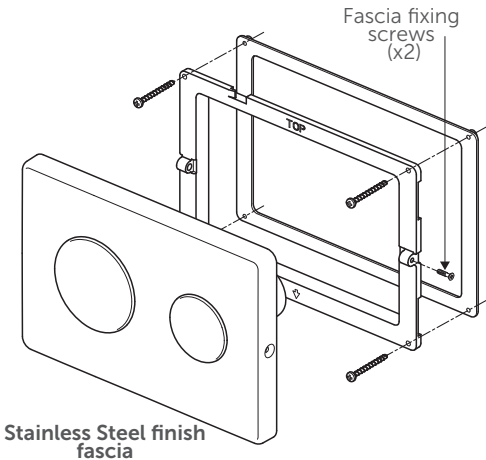
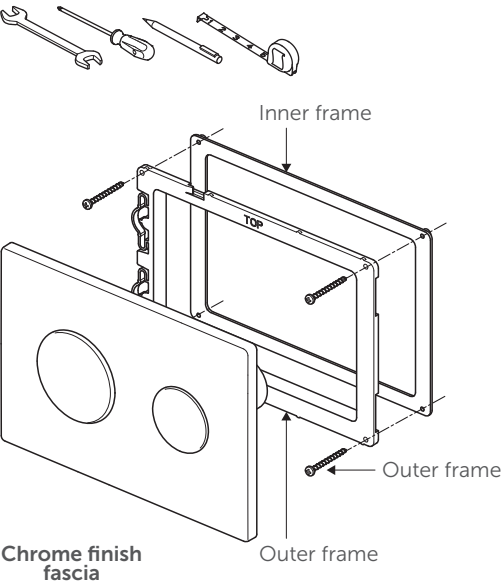
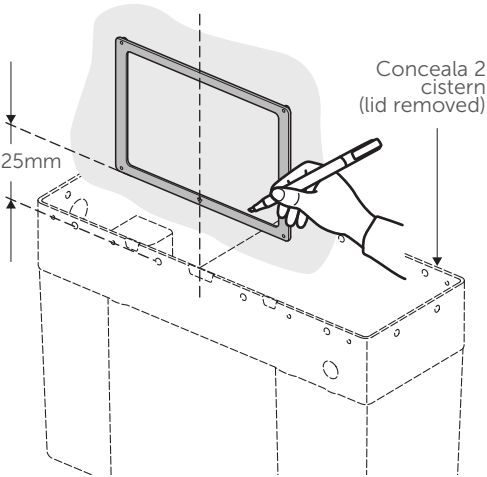


Figure 1

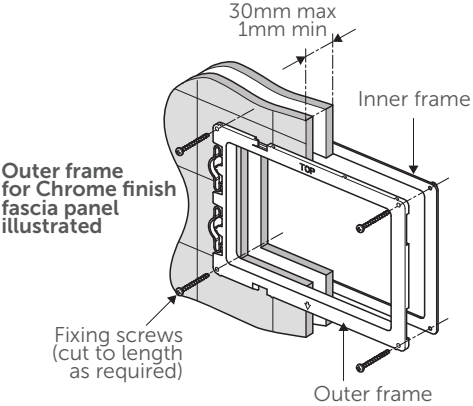


Position of cut-out in wall

Using the inside edge of the inner frame as a template. Mark the wall for cut-out ensuring the centre (marked ↓) is aligned with the centre of the cistern, (Figure 2). Cut out to marked lines. Mark out and drill the four fixing holes.

Where access through the cut-out is required for maintenance of the cistern, a distance of 25mm between the bottom of the cut-out and the top of the cistern is recommended.

WALL INSTALLATION



FURNITURE INSTALLATION

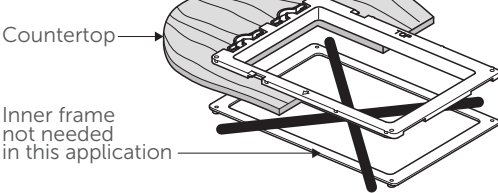


Figure 3

Walls over 30mm thick

The front frame will need to be fixed as Figure 3. Howeverm, the inner frame can be omitted. Alternative screw fixings (not supplied) may be required to suit this application. Careful nore must be made of screw shank and head size, which must not be increased. No. 6 round head woodscrews are recommended. A wooden support should be used to 'Line' the cut-out to aid fixing. Where a wooden support is required the cut-out should be made larger to accommodate the support framing. Assemble to wall as Figure 3.

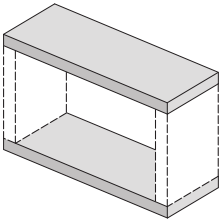


Figure 4

FITTING FASCIA PANEL - CHROME FINISH

Locate left hand end of fascia panel over outer frame spring **1**. Hold down and push to the right simultaneously until fascia snaps into position **2** then release **3**.
Ensure pneumatic tubes are connected to the push buttons prior to fitting the fascia panel.

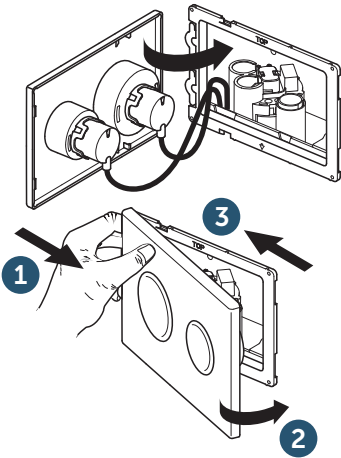


Figure 5

FITTING FASCIA PANEL - STAINLESS STEEL FINISH

Locate left hand end of fascia panel over outer frame spring **1**. Hold down and push to the right simultaneously until fascia snaps into position **2** then release **3**.
Ensure pneumatic tubes are connected to the push buttons prior to fitting the fascia panel.

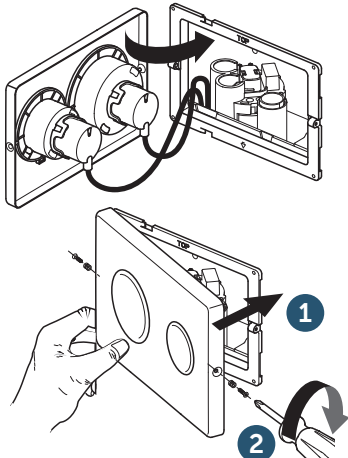
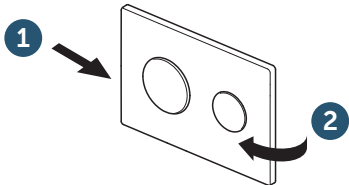


Figure 6

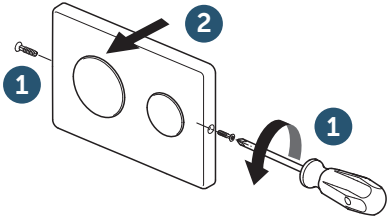
TO REMOVE CHROME FASCIA PANEL

Whilst pushing left hand edge of fascia **1**. Lift at right hand edge **2**.



TO REMOVE STAINLESS STEEL FASCIA PANEL

Remove fixing screw using allen key **1**. Pull away **2**.



CUSTOMER CARE HELPLINE
01482 496318

FAX LINE 01482 499611
email: customercare@idealstandard.com

ww10**0047**67
ver. 1.0/12.22