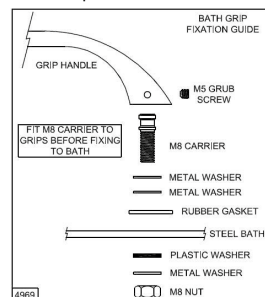




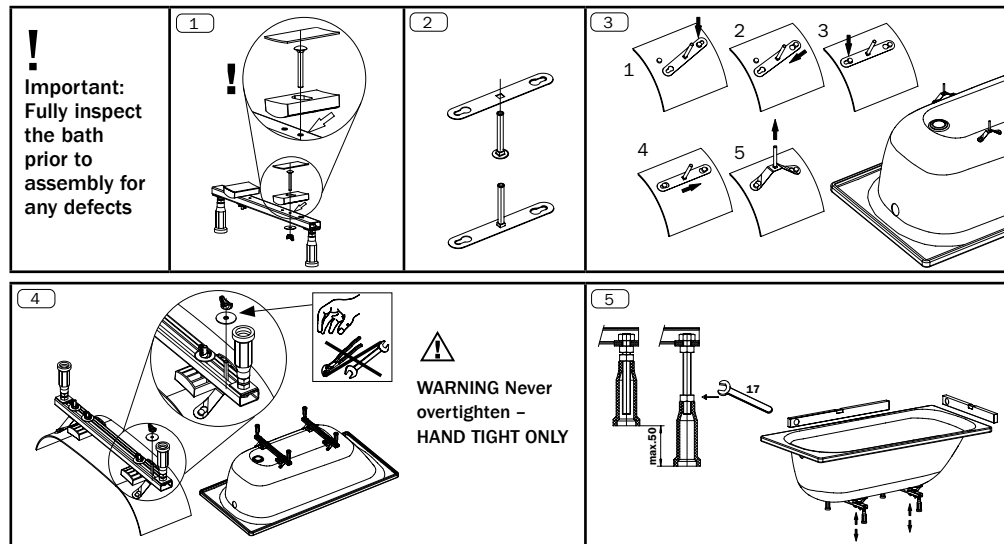
Ideal Standard

Steel Bath Installation Instruction

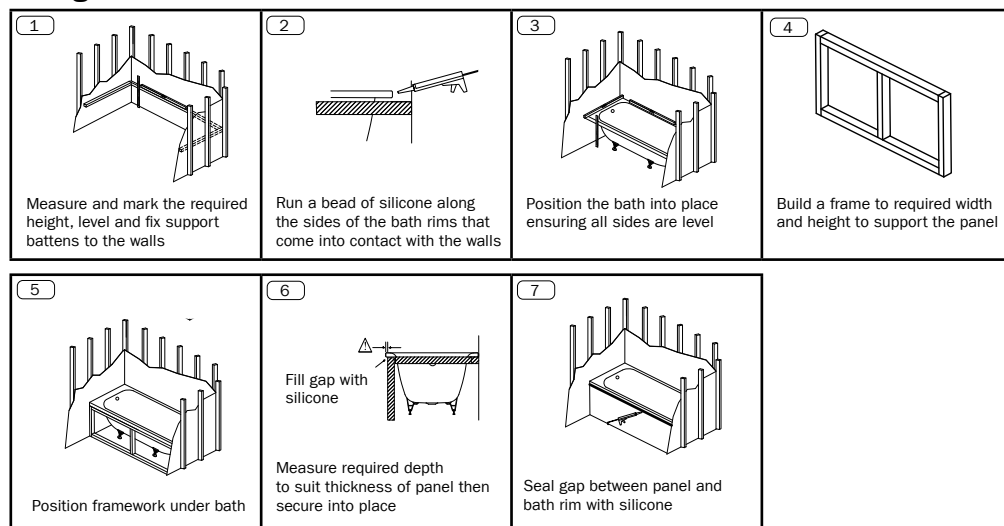
Hand Grip Version Bath



Fixing the feet



Fixing the Bath and Panel



Care instructions for enamelled steel baths

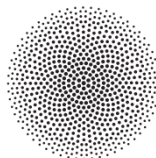
- After use, rinse the surface with water and wipe with a suitable cloths
- Remove light marks with a mild acid-free household detergent, soak heavier marks before cleaning.
- Calcium deposits may be avoided by removing water after use. It is important to ensure that fittings don't leak. Any calcium deposits that do occur can be removed with a 1:1 solution of vinegar and water. Do not use concentrated vinegar, powder cleaner or acidic cleaners. After cleaning, rinse the surface thoroughly.
- Use of drain cleaning product: Read the manufacturer's instructions carefully. Pour the cleaner directly into the wastepipe. Remove any cleaner that may have splashed onto the enamel immediately.

Installation instructions for steel enamel bathtubs

- When handling steel enamel baths, care must be taken, that they are treated correctly. This applies to their transport, unpacking and installation.
- It is recommended that baths are fitted during the fine installation, i.e. after the bathroom has been tiled and that they are covered until all the building work.
- During installation, ensure that the surface below the lower edge of the bathtub does not come into direct contact with mortar or adhesive. Please read and follow the usage instructions for all materials and tools used during installation. In particular, this includes all safety requirements in the relevant manufactures instructions as well as the curing and flash-off times for multi-component mortar, adhesives and sealants.

Note: For Anti-Slip models only

- The Anti-Slip pattern shown is the Anti-Slip surface



Ideal Standard

The Bathroom Works
National Avenue
Kingston upon Hull
HU5 4HS
England
Telephone: (01482) 346461
Telefax: (01482) 445886.

CUSTOMER CARE HELPLINE

0870 1296085

CUSTOMER CARE FAX LINE 01482 499611

email: ukcustcare@IdealStandard.com

We pursue a policy of continuing improvement in design an performance of our products.
The right is, therefore, reserved to varify specifications without notice.

Ideal Standard (UK) Ltd.



13 DoP-14516 PH EN 14516 - CL1 + CL 2 Baths for domestic purposes

CA - DA www.idealstandard.com/dop

