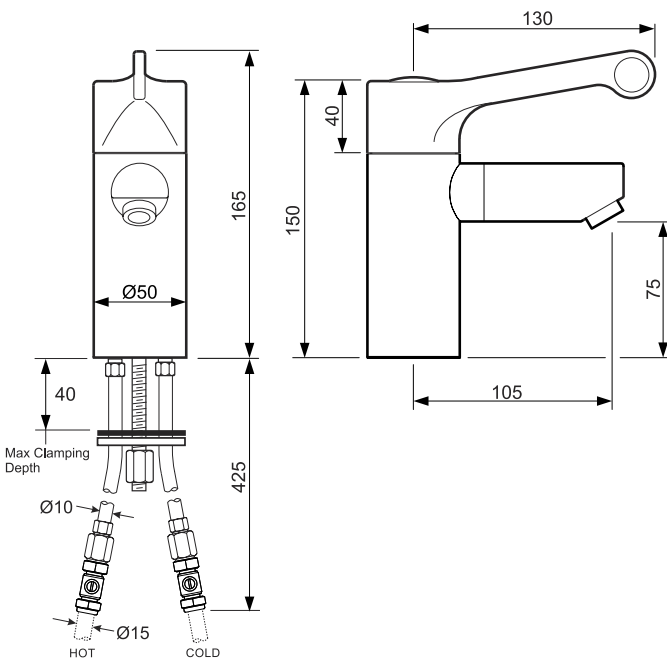


# sola thermostatic basin mixer with detachable spout

cool touch  
removable spout suitable for autoclaving  
self-draining spout with smooth internals and open hole outlet



Sola Thermostatic Basin Mixer with Detachable Spout



## to specify/order:

Please use the product reference shown below.

## thermostatic basin mixer tap

Single lever sequential  
thermostatic basin mixer tap:  
Including copper tails and  
service valves

**SF1139CP**

## finish

Chrome plated CP.

## approvals

BREEAM compliant.  
HBN 00-10 C, code TP6, HBN-04-01-A

## recommended operating pressure

Maximum inlet pressure Static	12bar
Maximum Recommended operating pressure	5bar
Minimum Operating Pressure	0.2bar
Maximum Inlet temperature	85°C
Minimum Inlet Temperature	10°C
Maximum un-balanced pressure ratio (without flow regulator)	5:1
Maximum Un-balance pressure ratio (with flow regulator)	15:1
*Minimum Temperature differential	10°C
Pre-set Factory Outlet Temperature	38°C
*Temperature difference between inlet temperature (Hot or Cold) and outlet temperature to ensure failsafe operation.	

Sola Thermostatic Basin Mixer with Detachable Spout - SF1139CP						
Flow Rate (Litres per minute)	0.5 Bar	1 Bar	2 Bar	3 Bar	4 Bar	5 Bar
With Flow Regulators Fitted	2.7	2.9	3.5	3.9	4.3	4.4

All measurements shown are in millimetres. Drawing sizes are not to scale.



**Twyford**  
Geberit Group