



Preliminary details

For further information please contact:

Acorn Blue

01637 876000

sales@acornblue.co.uk

www.acornpropertygroup.org

different by design



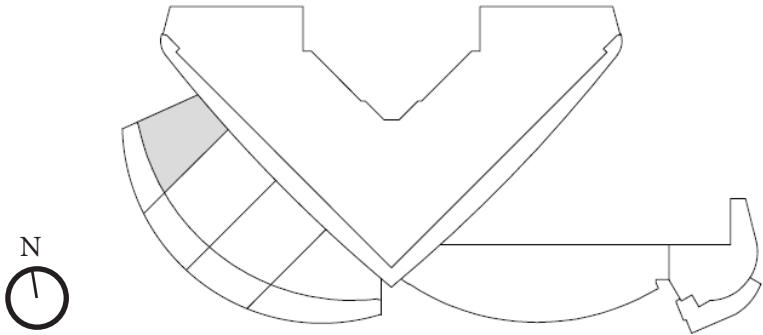


CGI of The Liner, Falmouth

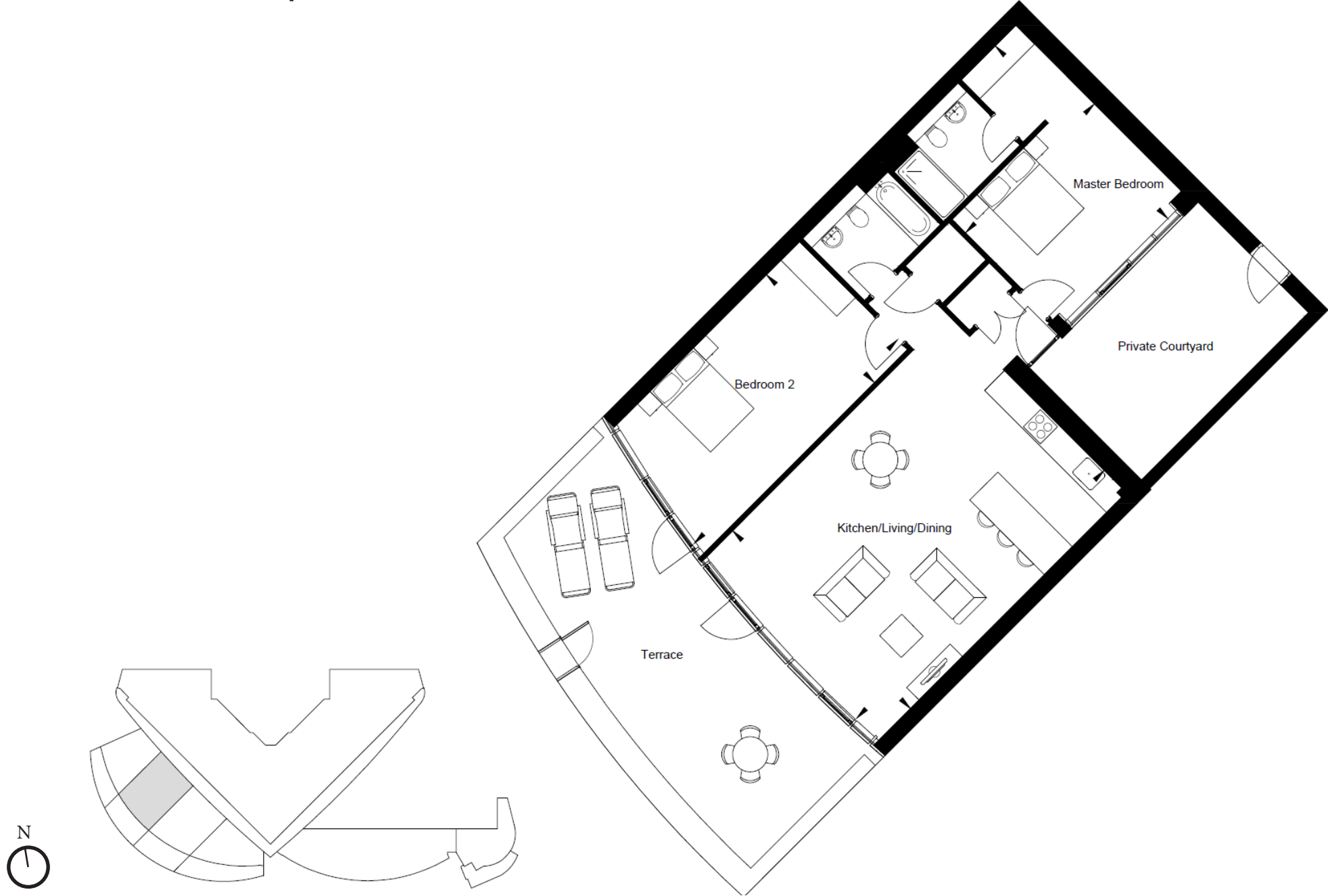


CGI of The Liner, Falmouth

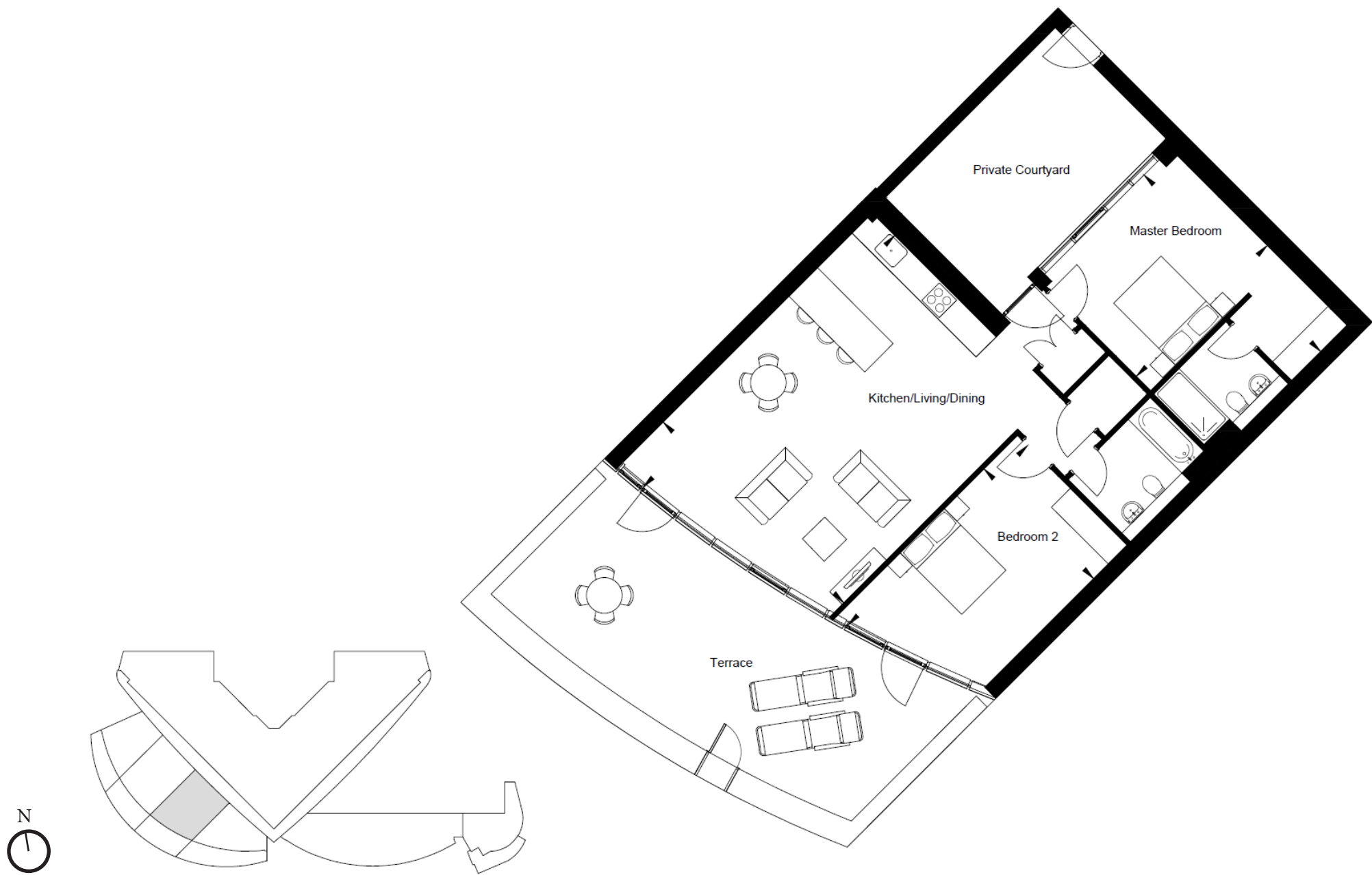
Ground Floor - Apartment 1



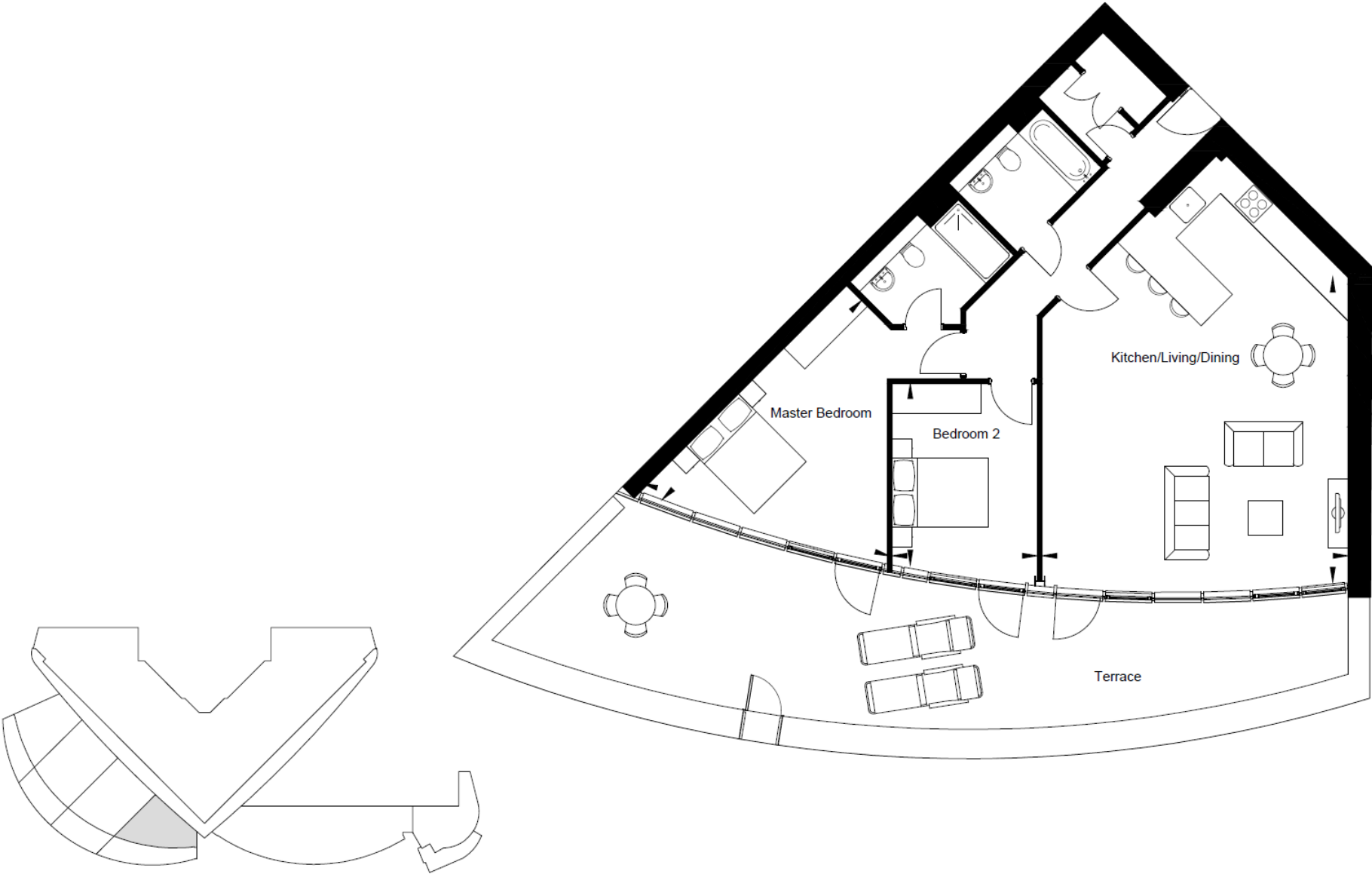
Ground Floor - Apartment 2



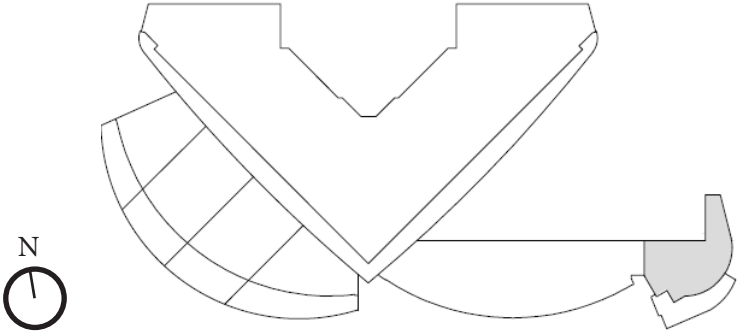
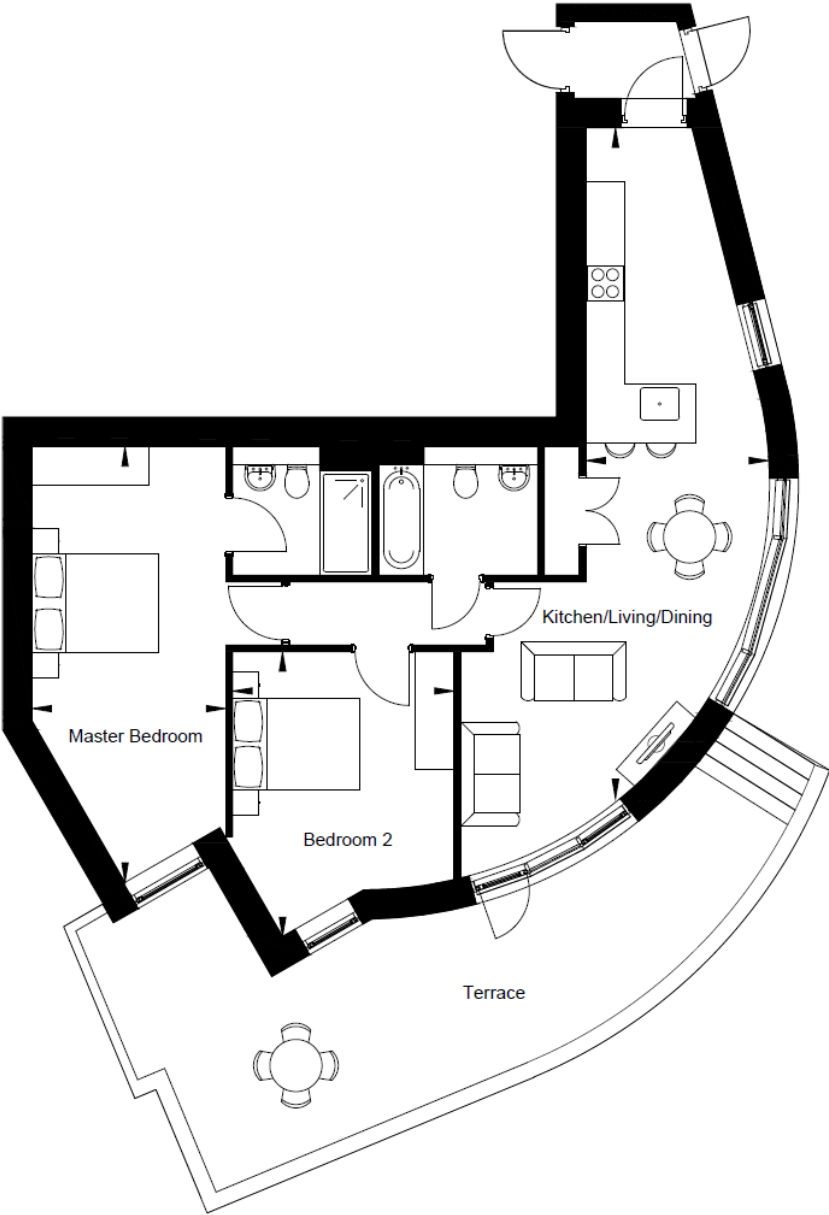
Ground Floor - Apartment 3



Ground Floor - Apartment 4



Ground Floor - Apartment 5



Ground Floor - Dimensions

Apartment 1:

Kitchen/Living/Dining	6.70m x 6.50m	21'11" x 21'3"
Master Bedroom	4.10m x 2.70m	13'5" x 8'10"
Bedroom 2	5.30m x 2.80m	17'4" x 9'2"

Apartment 2:

Kitchen/Living/Dining	7.90m x 5.70m	25'11" x 18'8"
Master Bedroom	5.50m x 4.10m	18'0" x 13'5"
Bedroom 2	6.50m x 3.40m	21'3" x 11'1"

Apartment 3:

Kitchen/Living/Dining	7.90m x 5.70m	25'11" x 18'8"
Master Bedroom	5.60m x 4.10m	18'4" x 13'5"
Bedroom 2	5.60m x 3.40m	18'4" x 11'1"

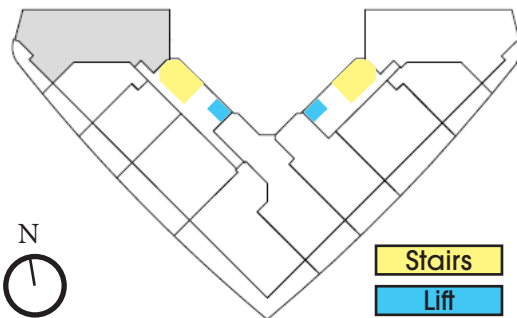
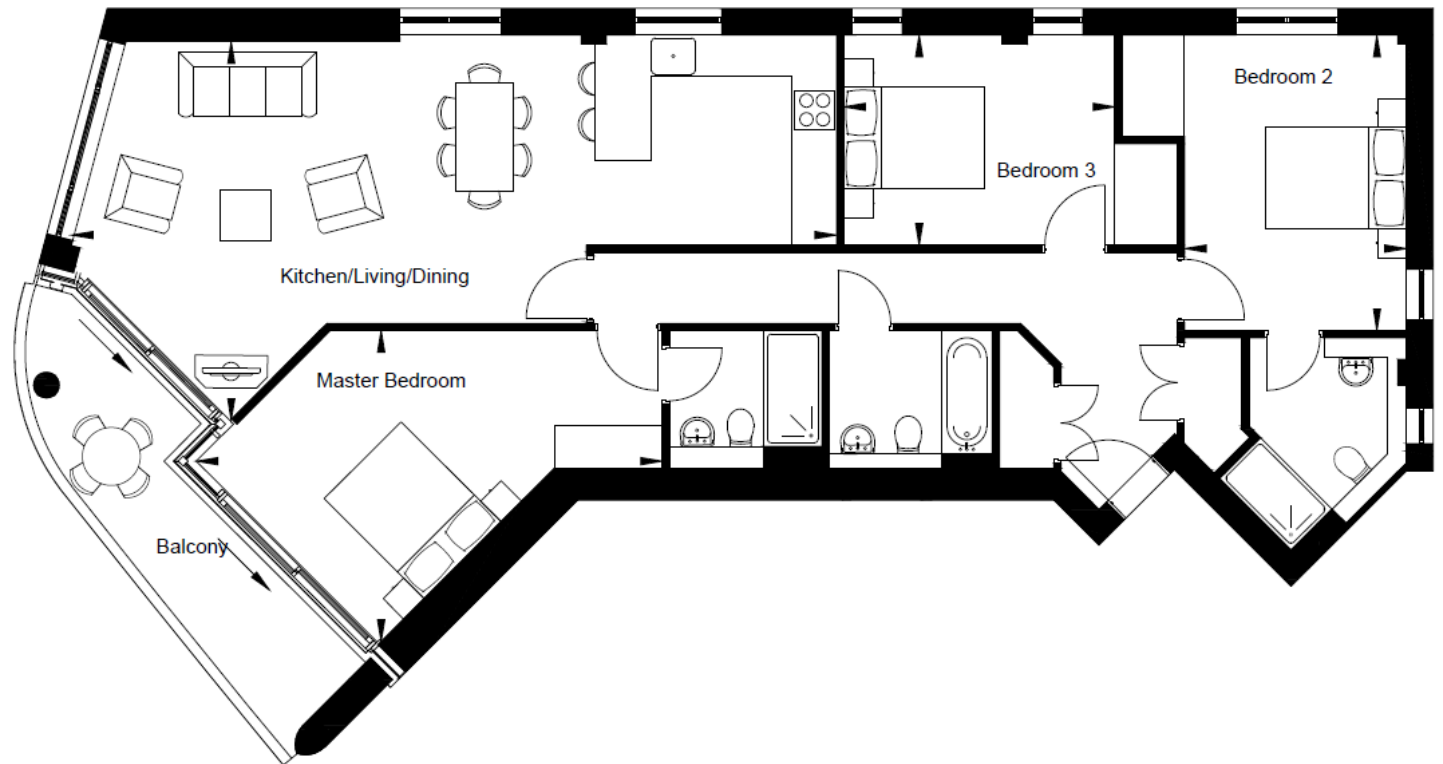
Apartment 4:

Kitchen/Living/Dining	8.90m x 6.20m	29'6" x 20'0"
Master Bedroom	5.70m x 5.20m	18'8" x 17'0"
Bedroom 2	3.60m x 2.90m	11'9" x 9'6"

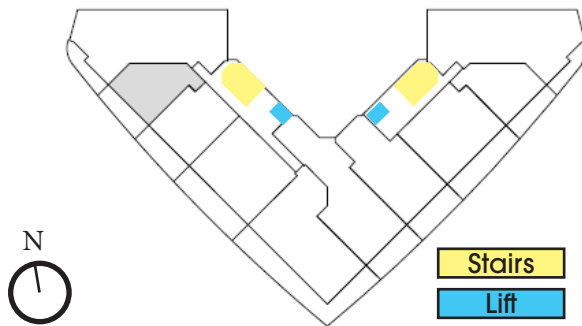
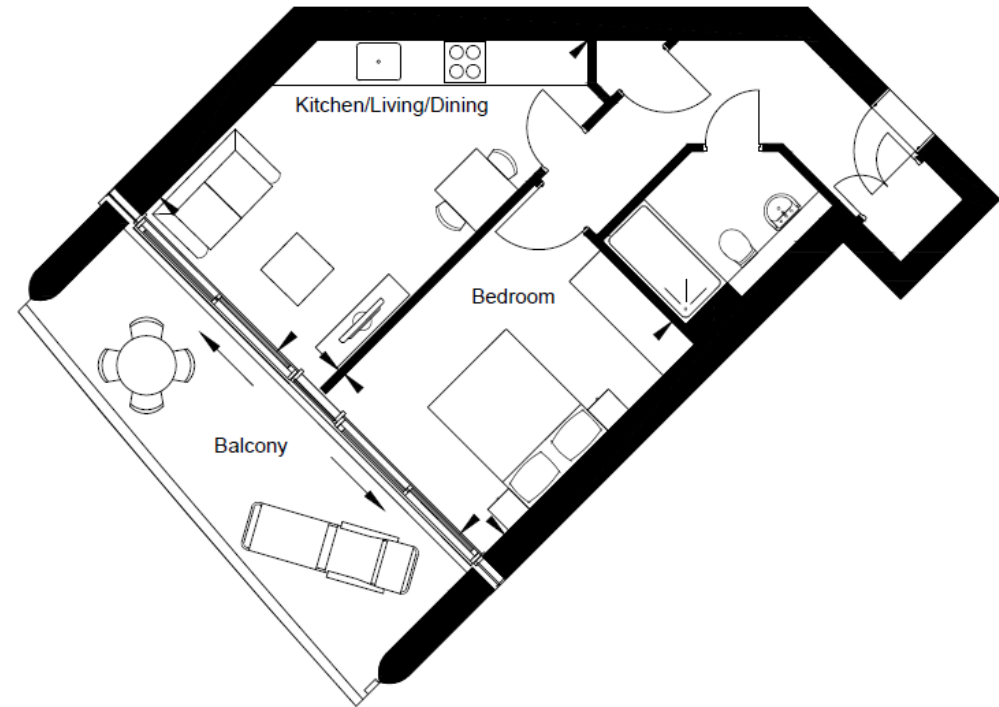
Apartment 5:

Kitchen/Living/Dining	10.20m x 2.80m	33'5" x 9'2"
Master Bedroom	6.60m x 2.90m	21'7" x 9'6"
Bedroom 2	4.30m x 3.40m	14'1" x 11'1"

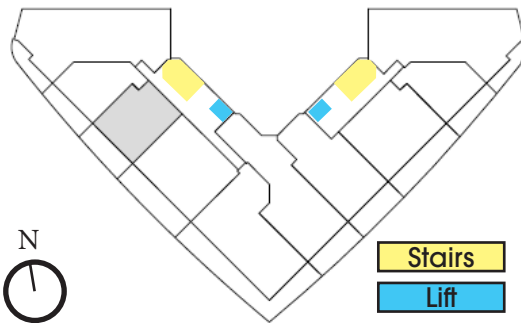
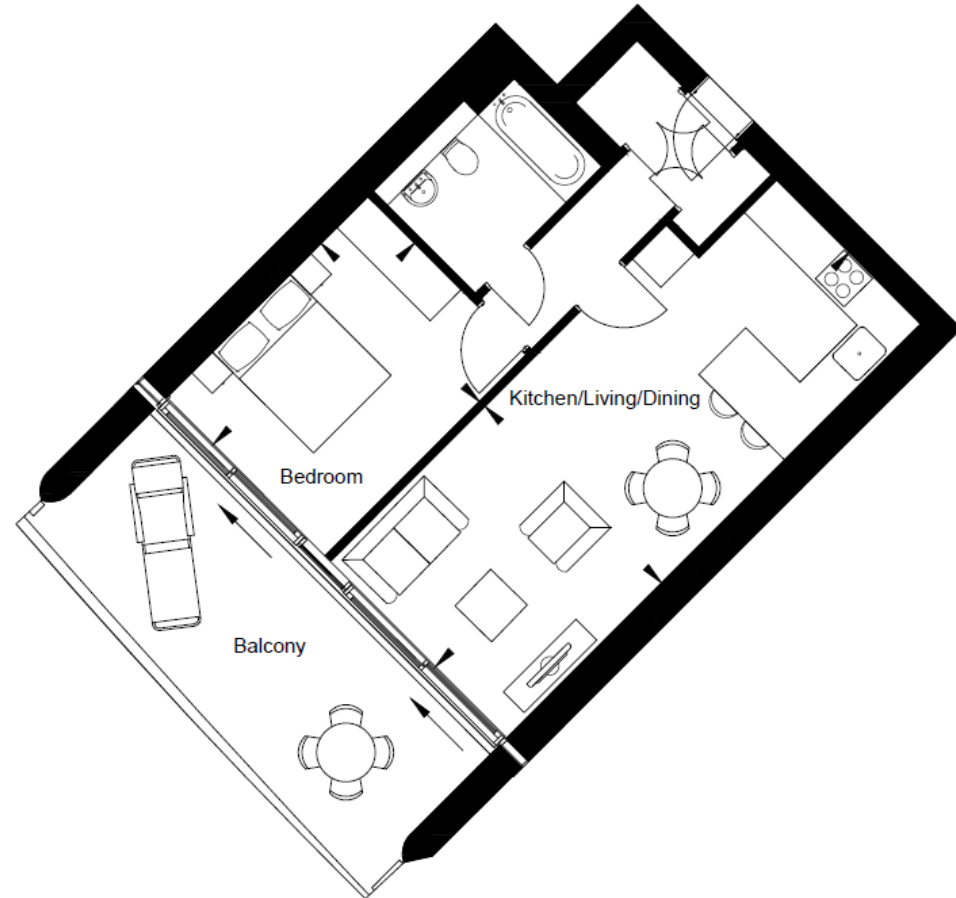
1st Floor - Apartment 6
2nd Floor - Apartment 16
3rd Floor - Apartment 26
4th Floor - Apartment 36



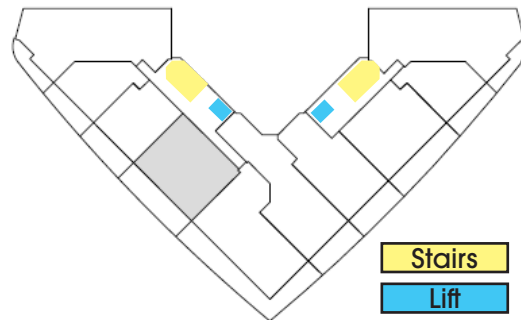
1st Floor - Apartment 7
2nd Floor - Apartment 17
3rd Floor - Apartment 27
4th Floor - Apartment 37



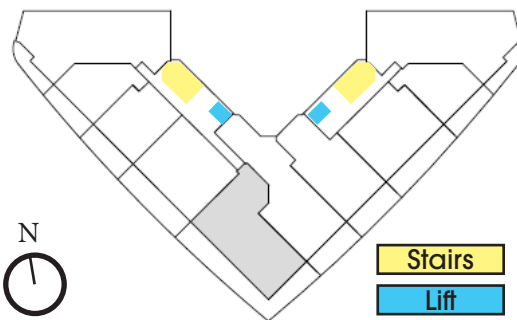
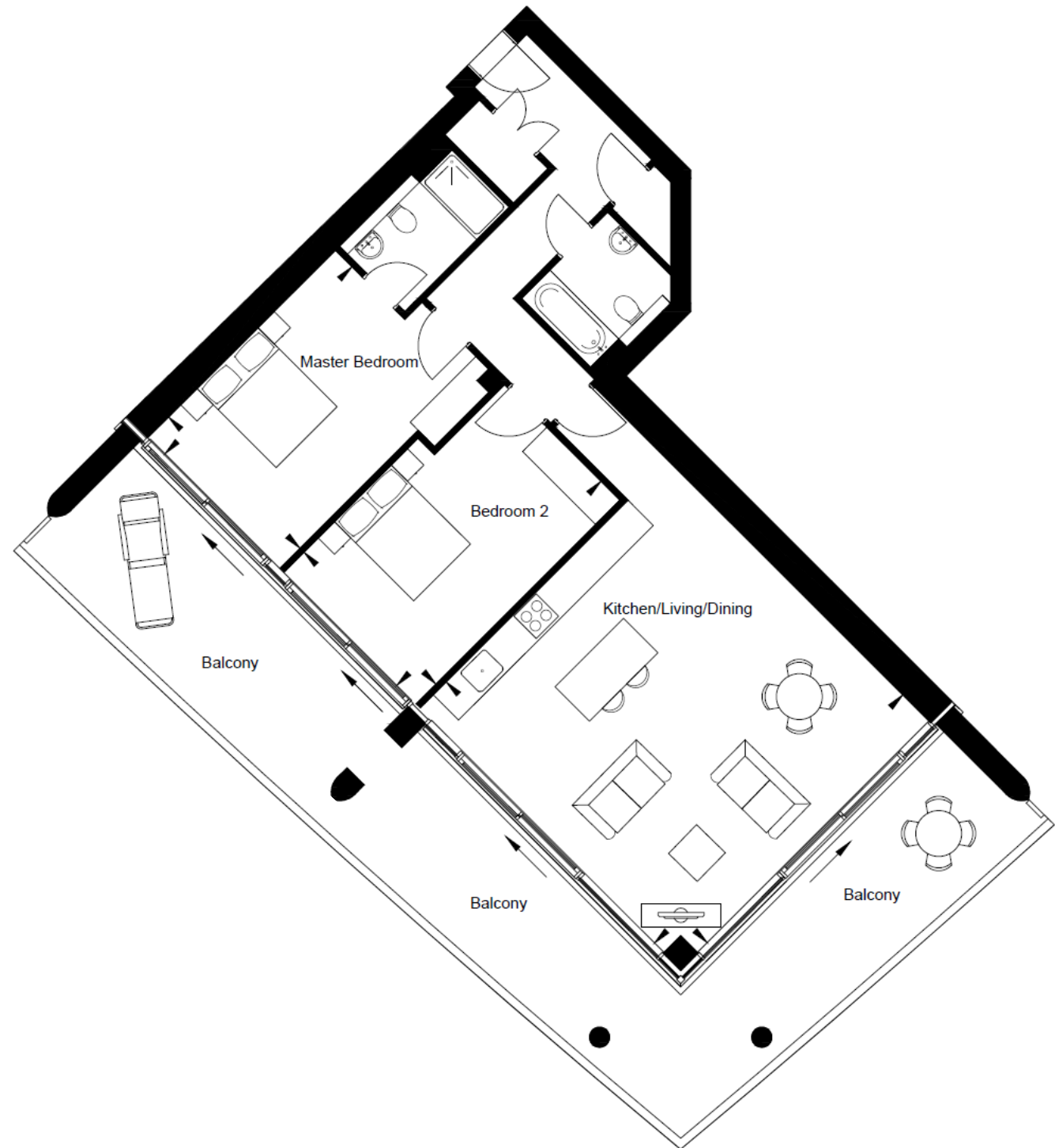
1st Floor - Apartment 8
2nd Floor - Apartment 18
3rd Floor - Apartment 28
4th Floor - Apartment 38



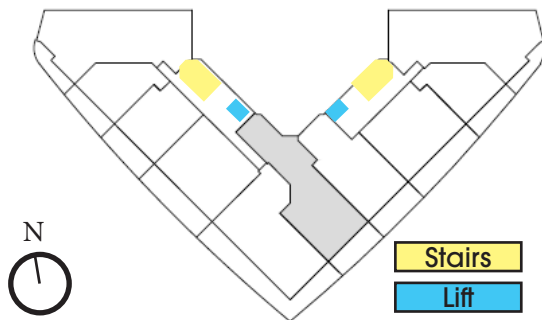
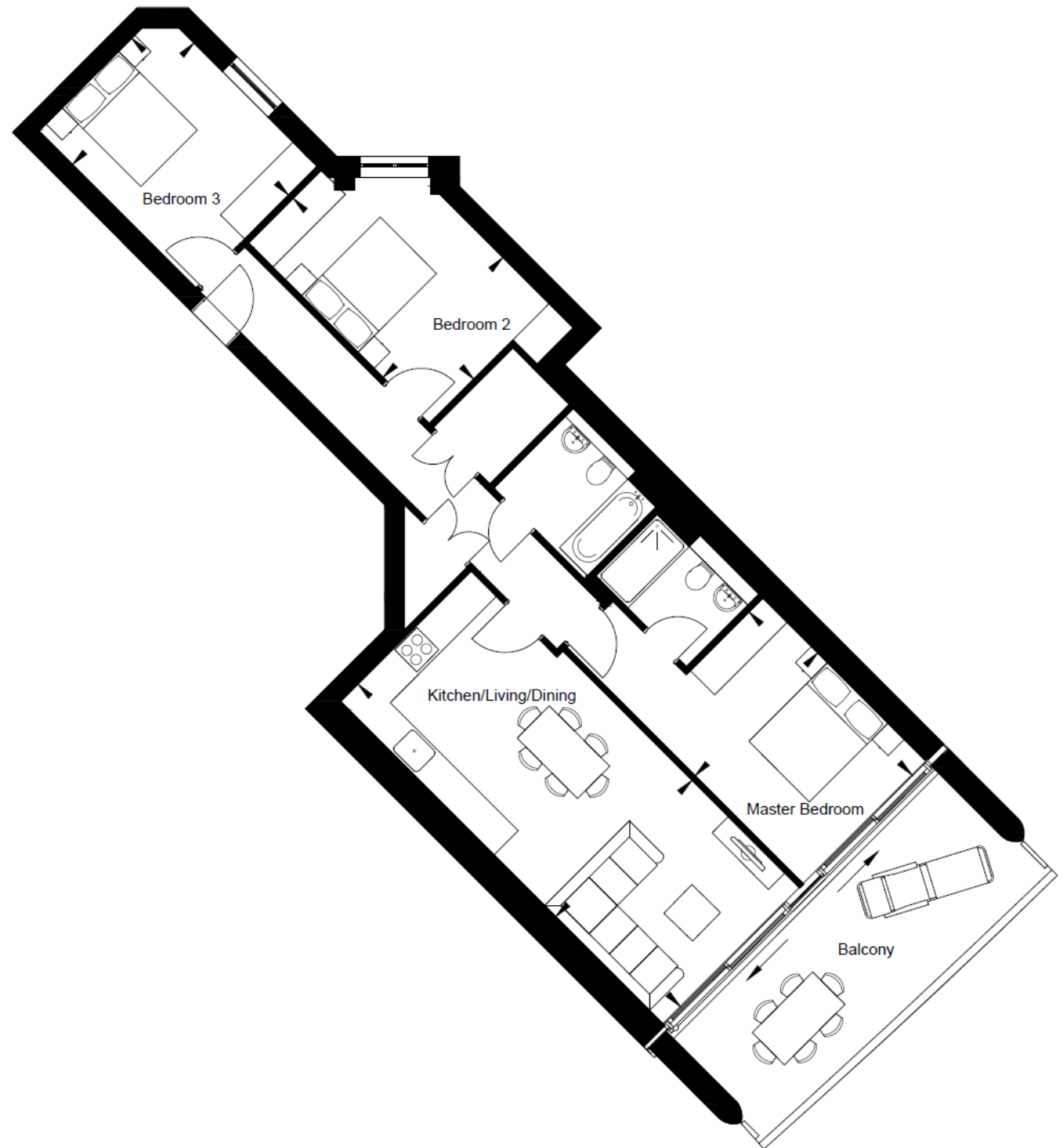
1st Floor - Apartment 9
2nd Floor - Apartment 19
3rd Floor - Apartment 29
4th Floor - Apartment 39



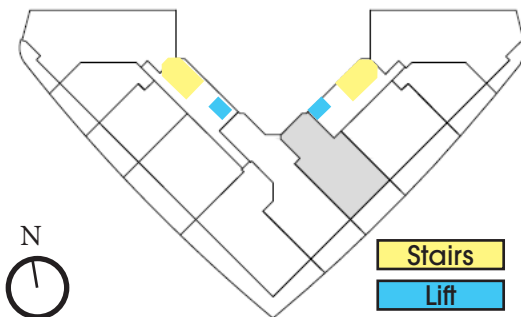
1st Floor - Apartment 10
2nd Floor - Apartment 20
3rd Floor - Apartment 30
4th Floor - Apartment 40



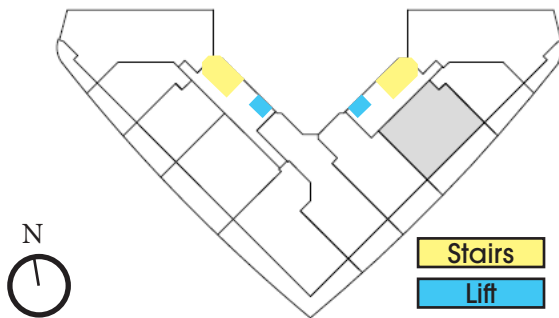
1st Floor - Apartment 11
2nd Floor - Apartment 21
3rd Floor - Apartment 31
4th Floor - Apartment 41



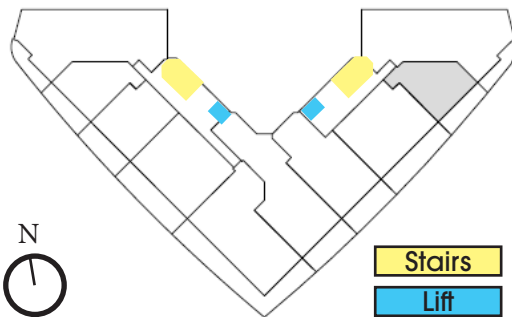
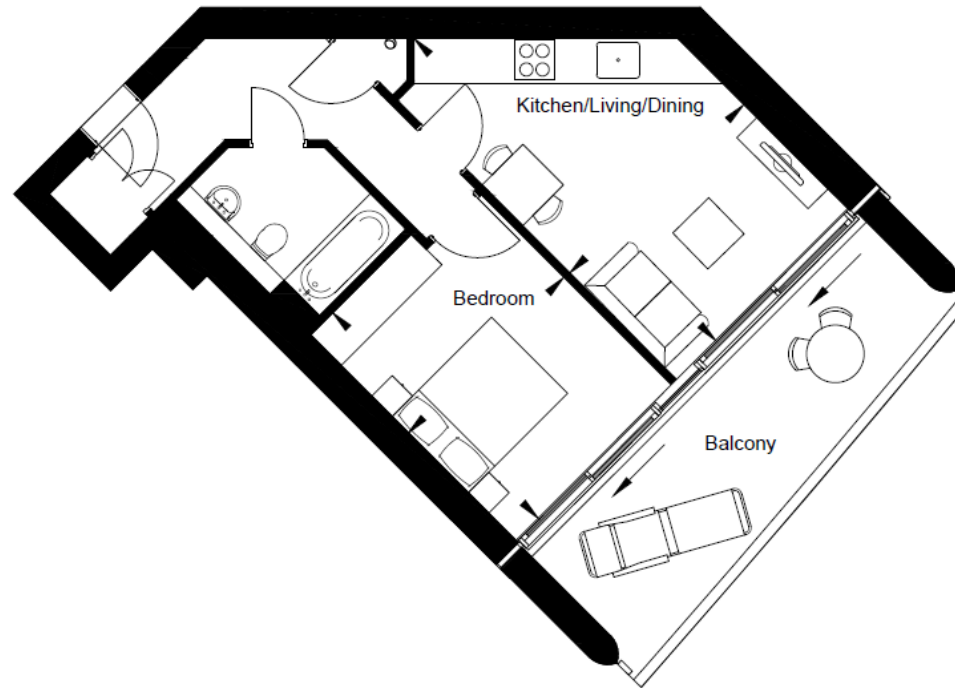
1st Floor - Apartment 12
2nd Floor - Apartment 22
3rd Floor - Apartment 32
4th Floor - Apartment 42



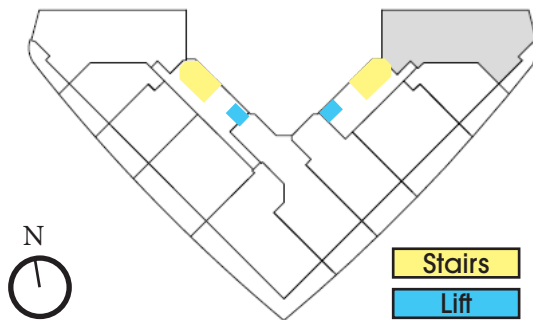
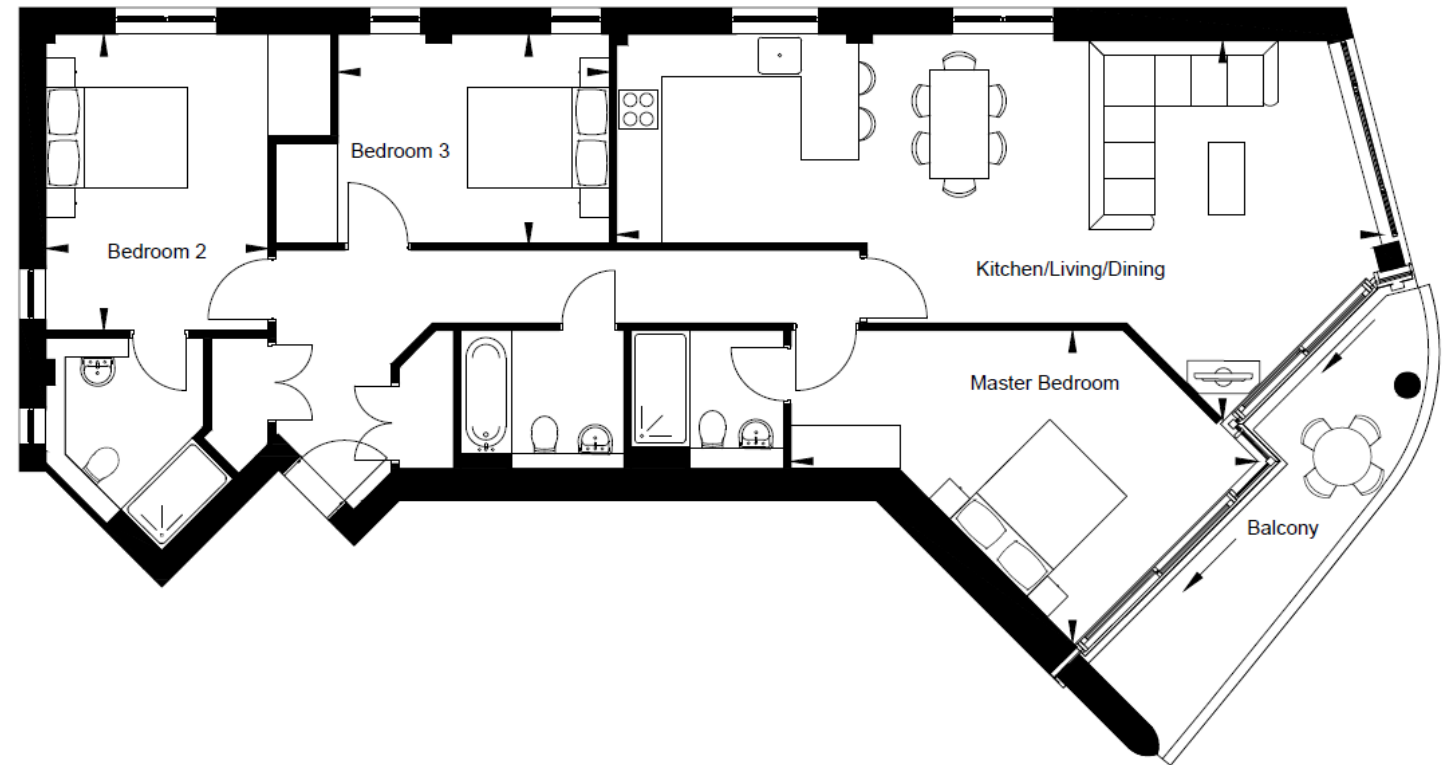
1st Floor - Apartment 13
2nd Floor - Apartment 23
3rd Floor - Apartment 33



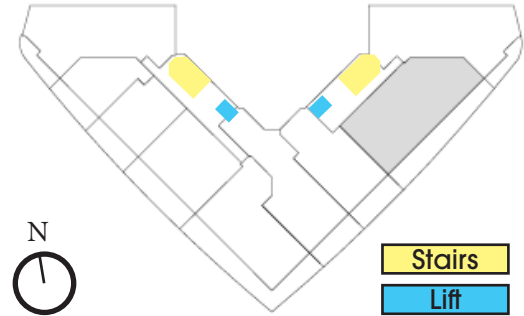
1st Floor - Apartment 14
2nd Floor - Apartment 24
3rd Floor - Apartment 34



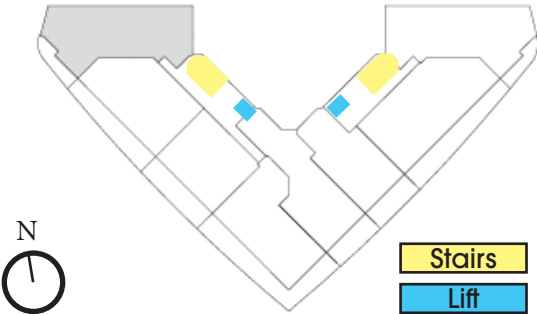
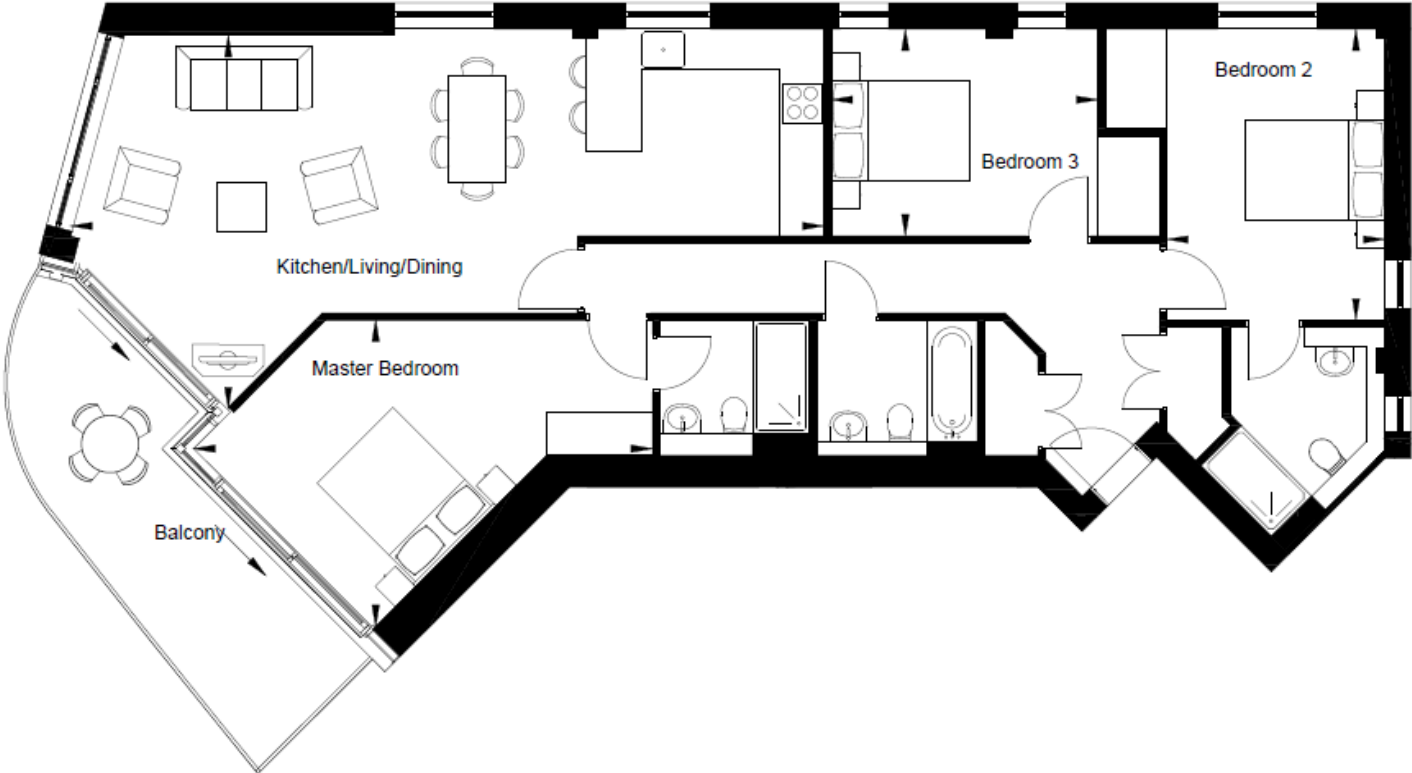
1st Floor - Apartment 15
2nd Floor - Apartment 25
3rd Floor - Apartment 35
4th Floor - Apartment 45



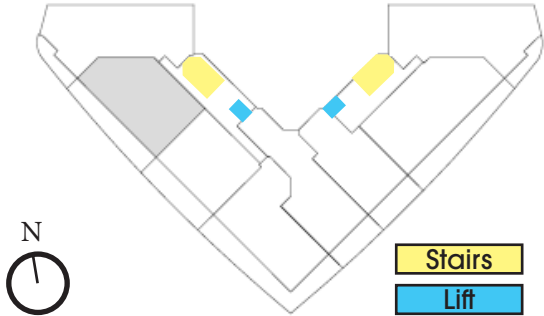
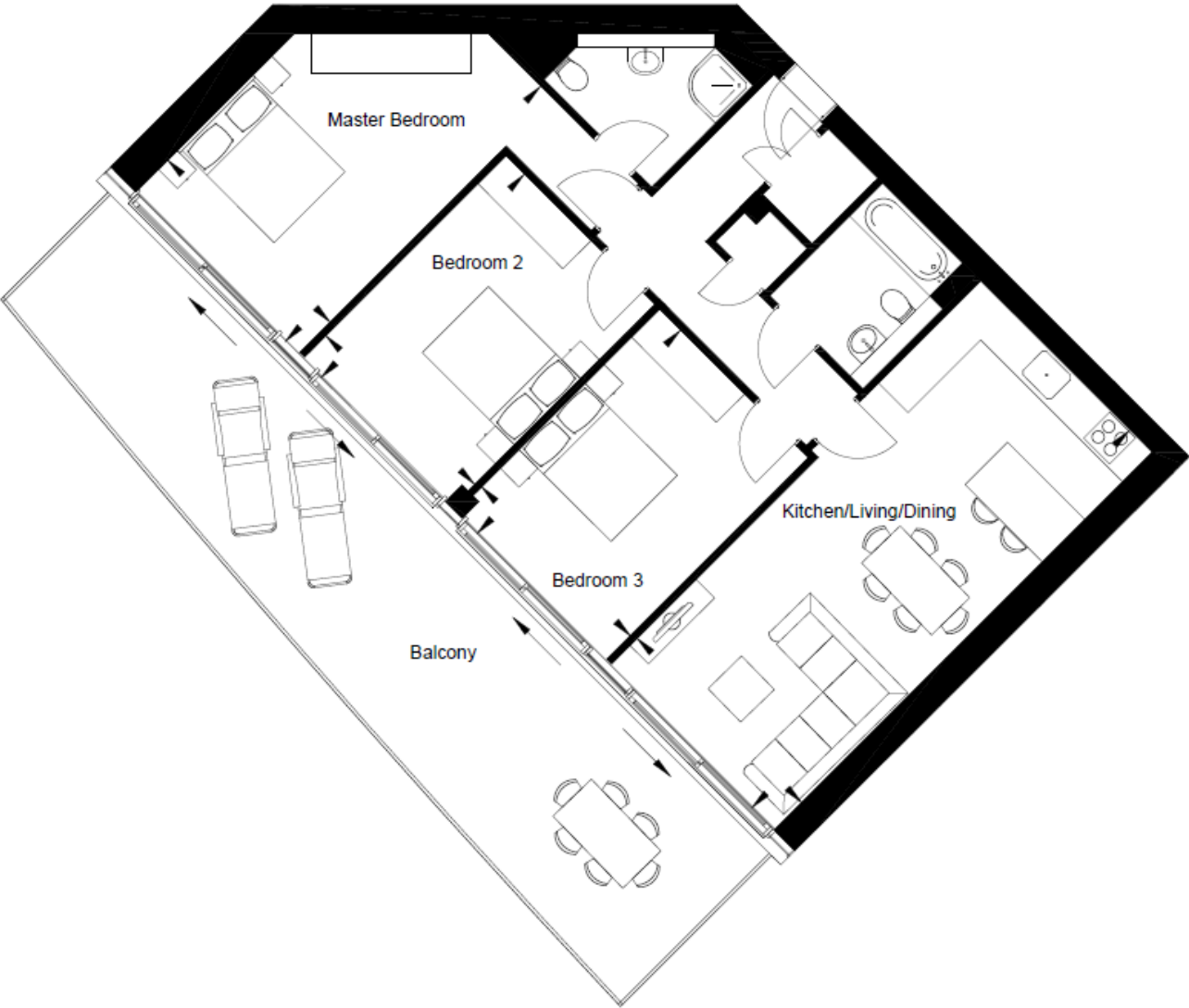
Fourth Floor - Apartment 43-44



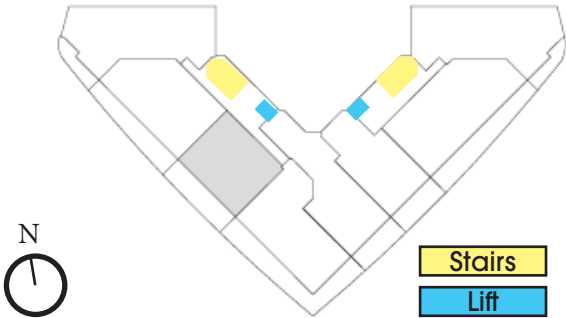
Fifth Floor - Apartment 46



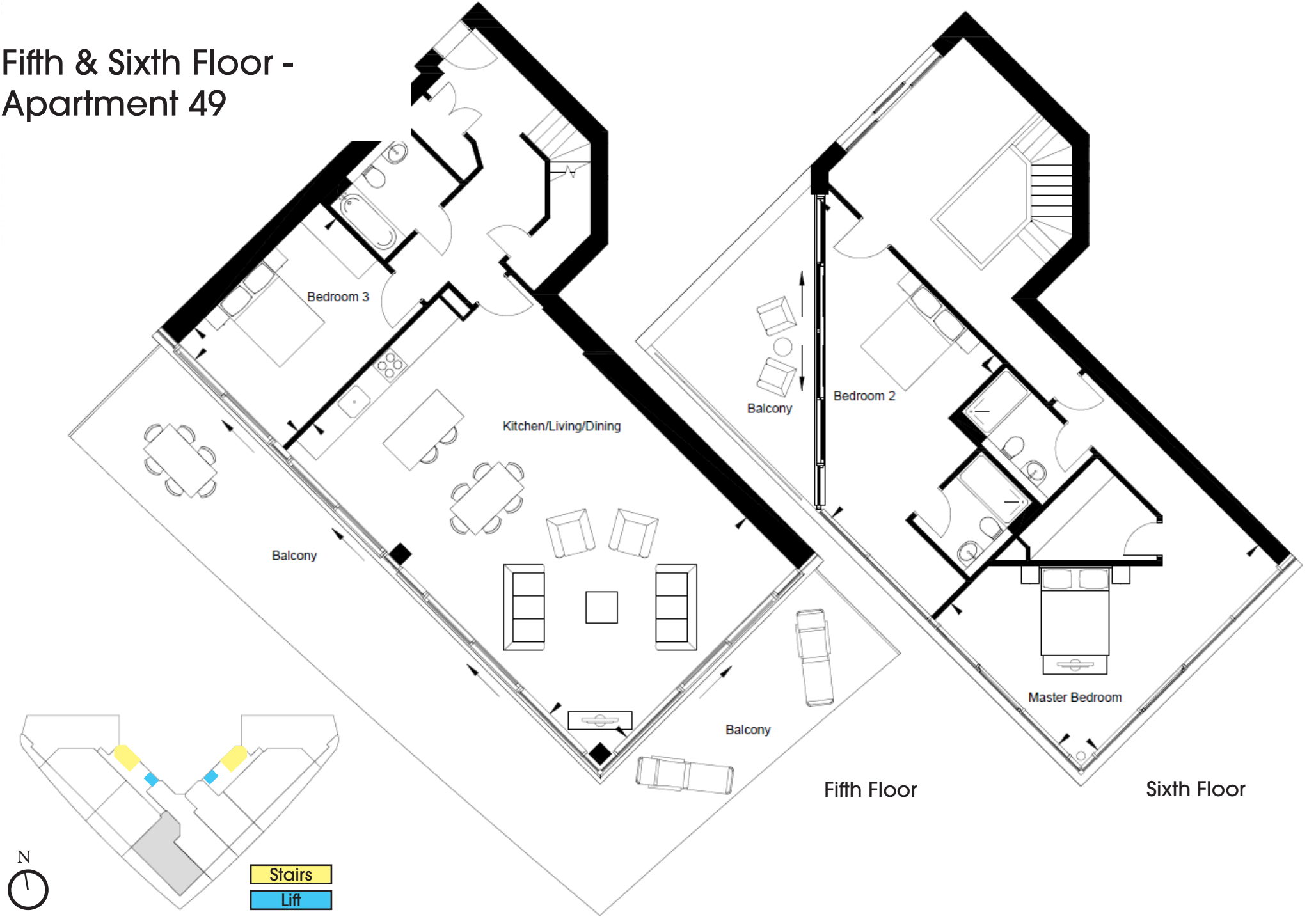
Fifth Floor - Apartment 47



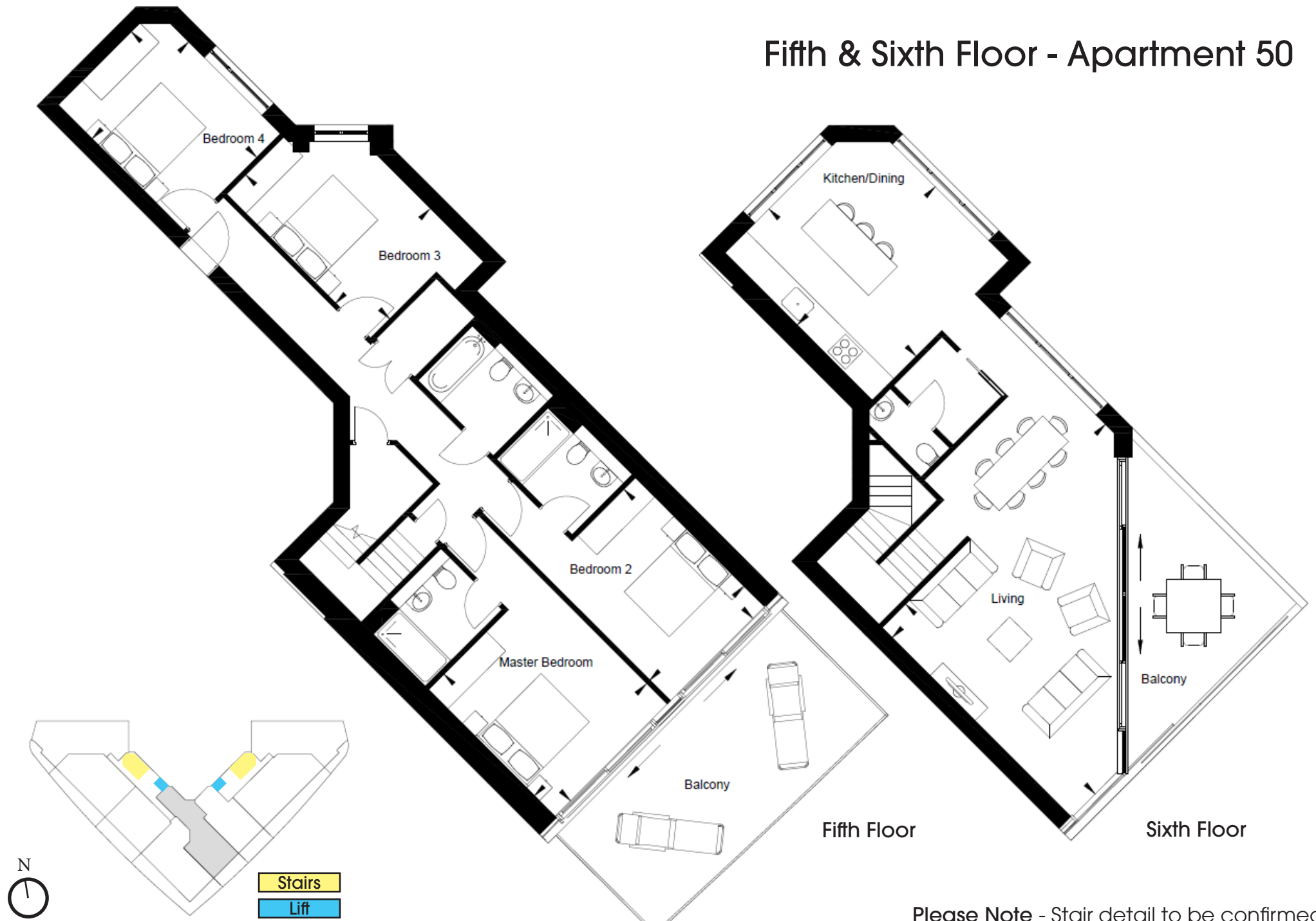
Fifth Floor - Apartment 48



Fifth & Sixth Floor -
Apartment 49

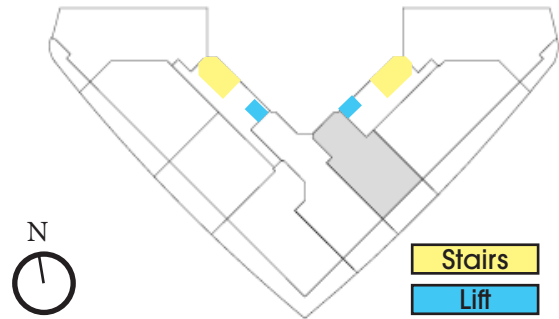


Fifth & Sixth Floor - Apartment 50

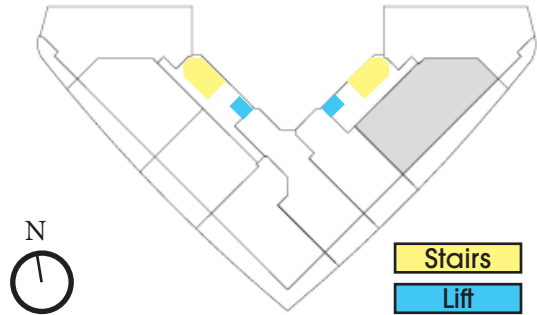


Please Note - Stair detail to be confirmed

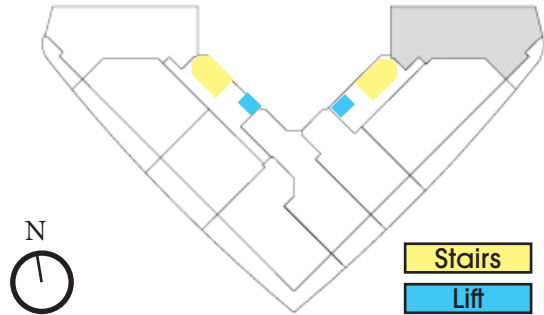
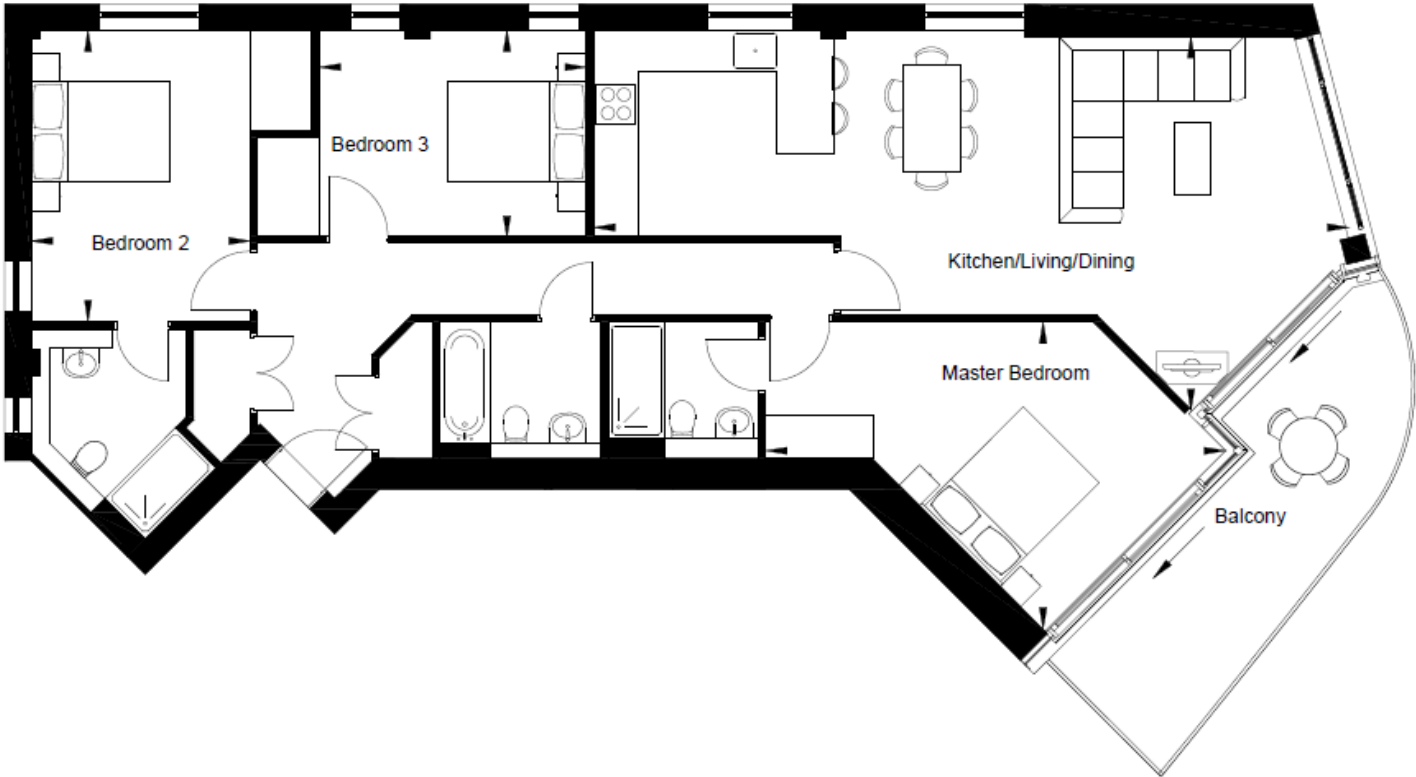
Fifth Floor - Apartment 51



Fifth Floor - Apartment 52



Fifth Floor - Apartment 53



First to Fourth Floor - Dimensions

Apartments 6, 16, 26, 36

Kitchen/Living/Dining	10.50m x 5.20m	34'5" x 17'0"
Master Bedroom	6.40m x 4.20m	20'11" x 13'9"
Bedroom 2	4.00m x 3.00m	13'1" x 8'10"
Bedroom 3	3.70m x 2.90m	12'1" x 9'6"

Apartments 7, 17, 27, 37

Kitchen/Living/Dining	5.90m x 3.30m	19'5" x 11'0"
Bedroom	4.00m x 3.00m	13'1" x 9'10"

Apartments 8, 18, 28, 38

Kitchen/Living/Dining	7.90m x 3.40m	25'11" x 11'1"
Bedroom	3.80m x 3.00m	12'5" x 9'10"

Apartments 9, 19, 29, 39

Kitchen/Living/Dining	7.90m x 3.50m	25'11" x 11'5"
Master Bedroom	5.10m x 2.90m	16'8" x 9'6"
Bedroom 2	4.50m x 2.90m	14'9" x 9'6"

Apartments 10, 20, 30, 40

Kitchen/Living/Dining	6.40m x 6.10m	20'11" x 20'0"
Master Bedroom	4.60m x 3.20m	15'1" x 10'5"
Bedroom 2	5.00m x 3.20m	16'4" x 10'5"

Apartments 11, 21, 31, 41

Kitchen/Living/Dining	7.90m x 3.30m	25'11" x 10'9"
Master Bedroom	4.00m x 3.00m	13'1" x 9'10"
Bedroom 2	4.40m x 2.90m	14'5" x 9'6"
Bedroom 3	3.80m x 3.00m	12'5" x 9'10"

Apartments 12, 22, 32, 42

Kitchen/Living/Dining	7.90m x 3.40m	25'11" x 11'1"
Master Bedroom	4.30m x 3.00m	14'1" x 9'10"
Bedroom 2	4.30m x 3.40m	14'1" x 11'1"

Apartments 13, 23, 33

Kitchen/Living/Dining	7.90m x 3.40m	25'11" x 11'1"
Master Bedroom	3.80m x 2.90m	12'5" x 9'6"
Bedroom 2	4.50m x 3.00m	14'8" x 9'10"

Apartments 14, 24, 34

Kitchen/Living/Dining	5.90m x 3.30m	19'4" x 10'9"
Master Bedroom	4.00m x 3.00m	13'1" x 9'10"

Apartments 15, 25, 35, 45

Kitchen/Living/Dining	10.50m x 5.20m	34'5" x 17'0"
Master Bedroom	6.40m x 4.20m	20'11" x 13'9"
Bedroom 2	4.00m x 3.00m	13'1" x 9'10"
Bedroom 3	3.70m x 2.90m	12'1" x 9'6"

Apartment 43-44

Kitchen/Living/Dining	7.90m x 5.90m	25'11" x 19'4"
Master Bedroom	3.60m x 3.40m	11'9" x 11'1"
Bedroom 2	4.00m x 3.00m	13'1" x 9'10"
Bedroom 3	5.00m x 3.30m	16'4" x 10'9"

Fifth Floor - Dimensions

Apartment 46:

Kitchen/Living/Dining	10.50m x 5.20m	34'5" x 17'0"
Master Bedroom	6.40m x 4.20m	20'11" x 13'9"
Bedroom 2	4.00m x 3.00m	13'1" x 9'10"
Bedroom 3	3.70m x 2.90m	12'1" x 9'6"

Apartment 47:

Kitchen/Living/Dining	7.90m x 3.40m	25'11" x 11'1"
Master Bedroom	5.30m x 3.40m	17'4" x 11'1"
Bedroom 2	4.20m x 3.10m	13'9" x 10'2"
Bedroom 3	4.20m x 3.10m	13'9" x 10'2"

Apartment 48:

Kitchen/Living/Dining	7.90m x 3.50m	25'11" x 11'5"
Master Bedroom	5.10m x 2.90m	16'8" x 9'6"
Bedroom 2	4.50m x 2.90m	14'9" x 9'6"

Apartment 49:

Fifth Floor

Kitchen/Living/Dining	9.70m x 6.10m	31'9" x 20'0"
Bedroom 3	4.30m x 3.20m	14'1" x 10'5"

Sixth Floor

Master Bedroom	6.20m x 4.50m	20'4" x 14'9"
Bedroom 2	5.40m x 5.00m	17'8" x 16'4"

Apartment 50:

Fifth Floor

Master Bedroom	3.90m x 3.40m	12'9" x 11'1"
Bedroom 2	4.00m x 2.90m	13'1" x 9'6"
Bedroom 3	4.40m x 2.90m	14'5" x 9'6"
Bedroom 4	3.90m x 3.00m	12'9" x 9'10"

Sixth Floor

Kitchen/Dining	4.50m x 4.30m	14'9" x 14'1"
Living	6.60m x 5.90m	21'7" x 19'4"

Apartment 51:

Kitchen/Living/Dining	7.90m x 3.40m	25'11" x 11'1"
Master Bedroom	4.30m x 3.00m	14'1" x 9'10"
Bedroom 2	4.30m x 3.40m	14'1" x 11'1"

Apartment 52:

Kitchen/Living/Dining	7.90m x 6.60m	25'11" x 21'7"
Master Bedroom	5.00m x 3.40m	16'4" x 11'1"
Bedroom 2	4.10m x 3.00m	13'5" x 9'10"
Bedroom 3	4.10m x 3.00m	13'5" x 9'10"

Apartment 53:

Kitchen/Living/Dining	10.50m x 5.20m	34'5" x 17'0"
Master Bedroom	6.40m x 4.20m	20'11" x 13'9"
Bedroom 2	4.00m x 3.00m	13'1" x 9'10"
Bedroom 3	3.70m x 2.90m	12'1" x 9'6"

Specification

KITCHEN

- Contemporary range of wall and base units by Stormer
- Quartz stone worktop with upstand
- Under unit feature lighting
- Stainless steel sink with mixer tap
- Glass splashback behind hob
- A range of integrated appliances to include:
 - Bosch fridge/freezer
 - Bosch built in Microwave oven to 1 & 2 beds only
 - Bosch built in combi-oven to 3 & 4 beds only
 - Bosch built in oven, induction hob with extractor fan over
 - Bosch dishwasher
 - Wine cooler
- Washer/dryer in utility cupboard

BATHROOM AND EN-SUITE

- Contemporary style white sanitary ware
- Contemporary wall mounted controls
- Thermostatic Shower
- Clear glazed bath screen / Shower screen
- Porcelain wall tiling
- Mirror

HEATING/HOT WATER

- Under floor heating
- Heated towel rail to bathroom and en-suite
- Electronic programming for heating system

ELECTRICAL FITTINGS

- LED strip lighting to wall units
- Recessed down lights
- Dimmer switches to living/dining and master bedroom
- Fibre optic internet connection
- Telephone point to living/dining
- Data, Satellite and TV aerial points to Living/dining
- Data and TV aerial points to bedrooms
- Video entry door access
- Shaver socket to bathroom and en-suite
- Pop up electrical sockets to kitchen island*

FLOORING AND FINISHING

- Karndean flooring to hall, kitchen and living room
- Carpet to bedrooms
- Porcelain floor tiles to bathroom and en-suite
- Walls and ceilings in matt emulsion
- High performance window systems
- Individual post box

EXTERNAL FINISHES

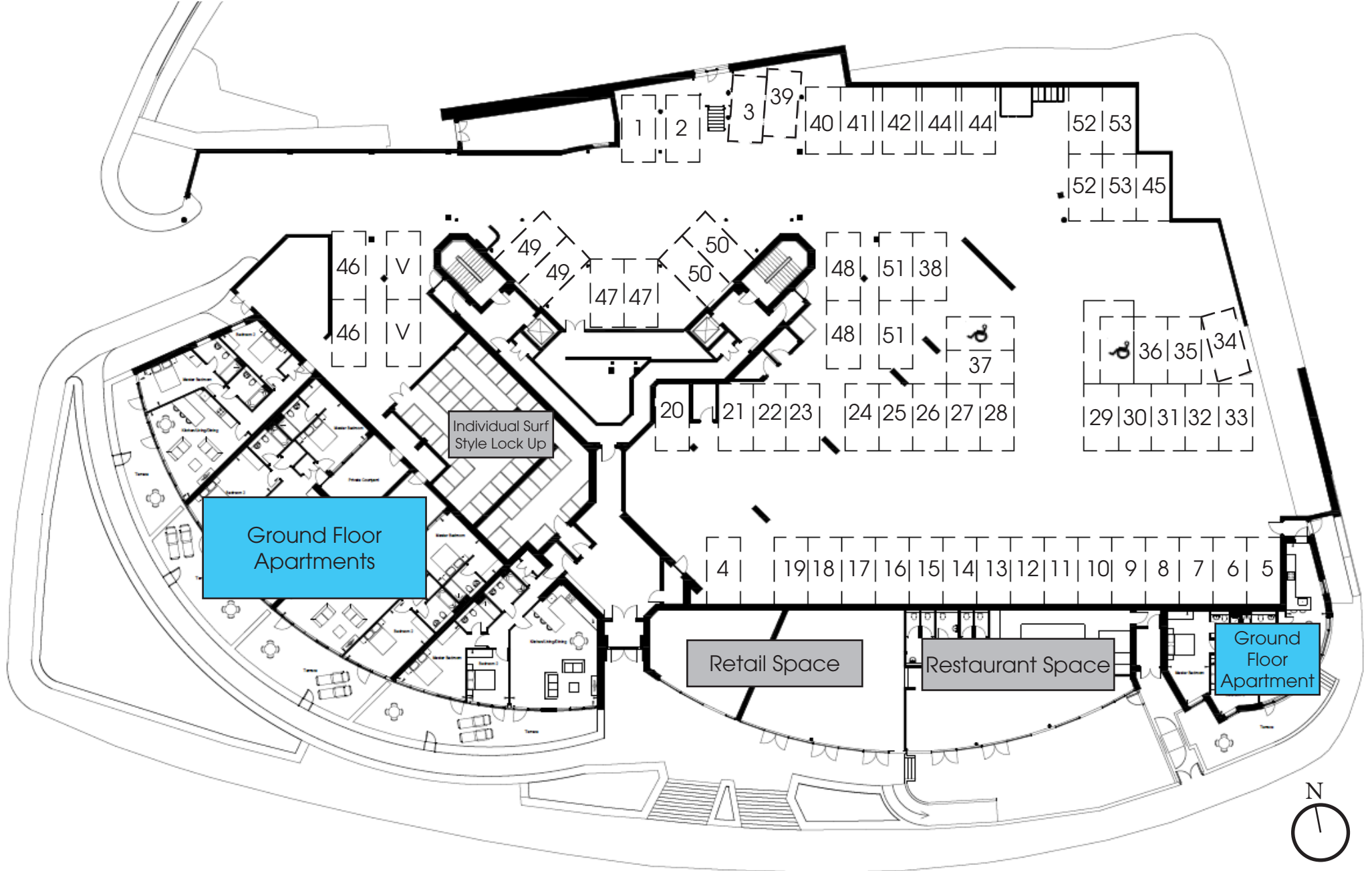
- Allocated parking per apartment
- Individual post boxes
- Individual surf style lockup
- lighting to balcony
- Communal bin store
- Communal garden areas

Please Note:

Plots 49 & 50 have Siemens integrated appliances

*Plot specific - please speak to a sales representative

Parking Plan





Previous Acorn Blue developments

different by design

These details are intended to give a general indication of the proposed development. The developer reserves the right to alter any part of the development, specification or floor layout at anytime. The contents shall not form part of any contract or be a representation inducing any such contract. All properties are offered subject to availability and applicants are advised to contact the developer or agent to ascertain availability of any property so as to avoid an unnecessary journey. These details are believed to be correct but neither the agent nor the developer accept any liability whatsoever for any misrepresentation made either in these details or orally. Applicants are therefore advised to make their own enquiries to check these details to satisfy themselves that the property is suitable. 17/04/20