



A stones throw from the centre of Corbridge, this three storey, five bedroomed home offers versatile accommodation which is well presented. It also benefits from a pleasant west facing garden, garaging and parking.



Corbridge | NE45 5BP

Guide Price: £385,000

ACCOMMODATION IN BRIEF

Internal

Living Room | Dining Room | Breakfasting
Kitchen | Ground Floor WC | Principal Suite
with Walk in Wardrobe & En-Suite Shower
Room | Guest Bedroom with En-Suite | Two
Further Double Bedrooms | Fifth Bedroom /
Office | Family Bathroom

External

Front & Rear Gardens | Driveway Parking |
Garaging

AGENTS NOTES

Distances

Hexham 4 miles | Newcastle 18 miles |
Newcastle Airport 16 miles

Services

All mains connected.

Council Tax Band | E

Tenure | Freehold

EPC | C



Internal

An attractive front door leads into the spacious central hallway which provides access into all of the rooms on the ground floor. To the left as you enter, there is a WC with two piece white suite and spotlighting to the ceiling. Beyond this lies the living room with windows to both east and west ensuring there is plenty of natural light throughout the day. An electric fire within a decorative fireplace with hearth provides wonderful lovely point and gives a lovely cosy feel to this great family space. Features such as attractive ornate cornicing and deep skirting boards give this an added touch of luxury.

Also accessed from the hallway is the dining room which could also double up as a second reception room. It has a sliding sash window facing east on to the village green ensuring a lovely green outlook; as with the living room it also benefits from beautiful cornicing.

The final room on the ground floor is the breakfasting kitchen with an absolute abundance of storage space, 1.5 bowl stainless steel sink with mixer tap as well as integrated appliances including double oven, fridge freezer, Smeg five ring gas hob, washer-dryer and dishwasher. There is also space for a condensing tumble dryer. The room is well lit with plenty of natural light via three west facing windows looking on to the well maintained gardens. There is ample space for a table and plumbing for a washer dryer.

The principal suite is located on the first floor. It has lovely views over the village green through a sliding sash double glazed window which faces east and therefore will benefit from morning sun. The suite itself has fitted wardrobes within the main area of the bedroom as well a dressing area with further wardrobes and open shelving space. The dressing area leads through to the en-suite with two piece white suite including pedestal style basin, low level WC and also fully tiled shower with sliding door. There is natural light via a wooden framed sliding window, wall fixed mirror, spotlighting to the ceiling and ladder style chrome finish heated towel rail.



Also on this floor there are two further bedrooms; the first of those has fitted wardrobes with hanging and shelf space as well as views through an eastern facing window, similar to that of the principal bedroom. The third bedroom on this floor is currently being utilised as an office, it has wood laminate flooring and a west facing sliding sash window.

The final room on this floor is the family bathroom which has a tiled floor. There is a bath with hand held attachment and mixer tap as well as a two piece white suite, walk in shower with bi-folding door, modern spotlighting to the ceiling and tiling to dado height.

Stairs from the first floor lead to the second floor where two further double bedrooms can be found both with Dormer windows providing lovely views over the rooftops and the countryside to the west. . The first makes an ideal guest room with en-suite shower room. There is storage into the eaves from the landing and also a boarded out loft which is accessed via a loft hatch in the second bedroom.





External

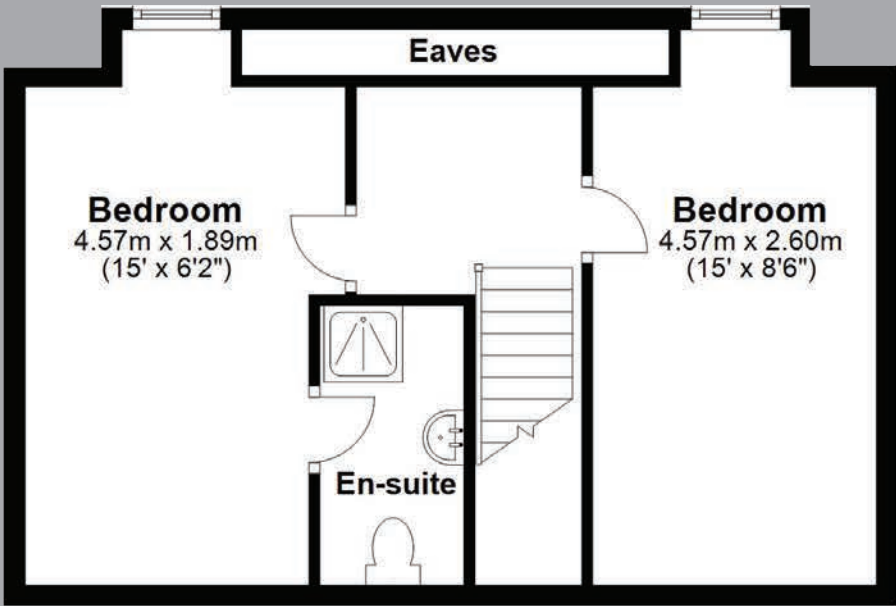
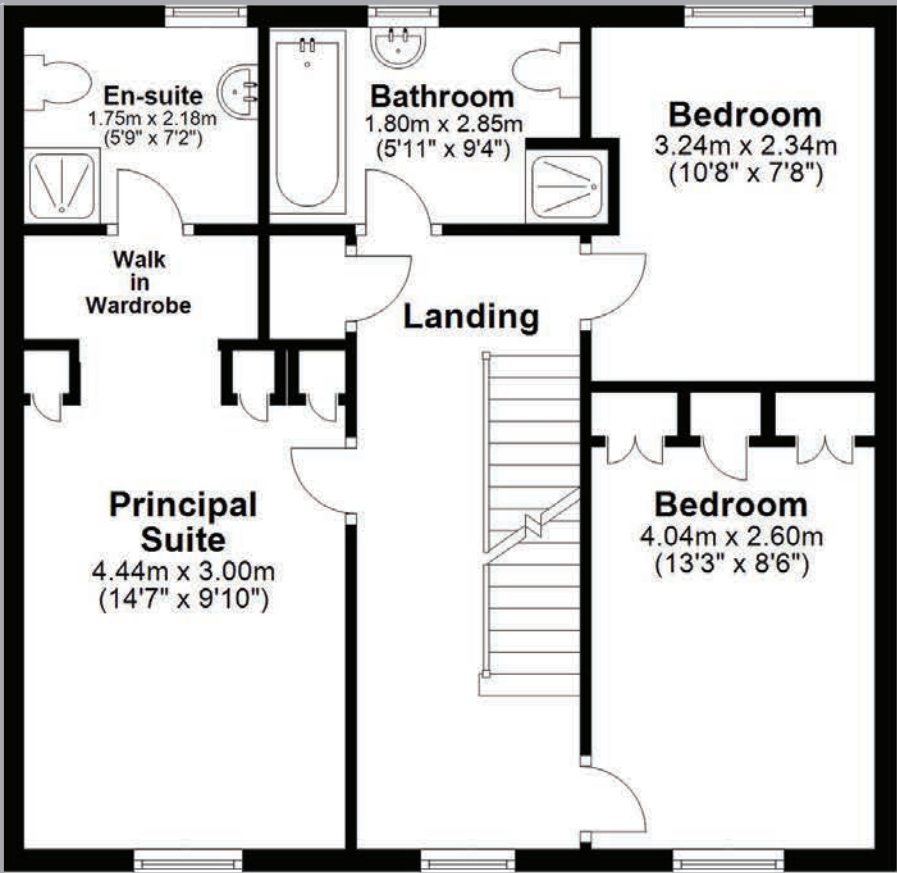
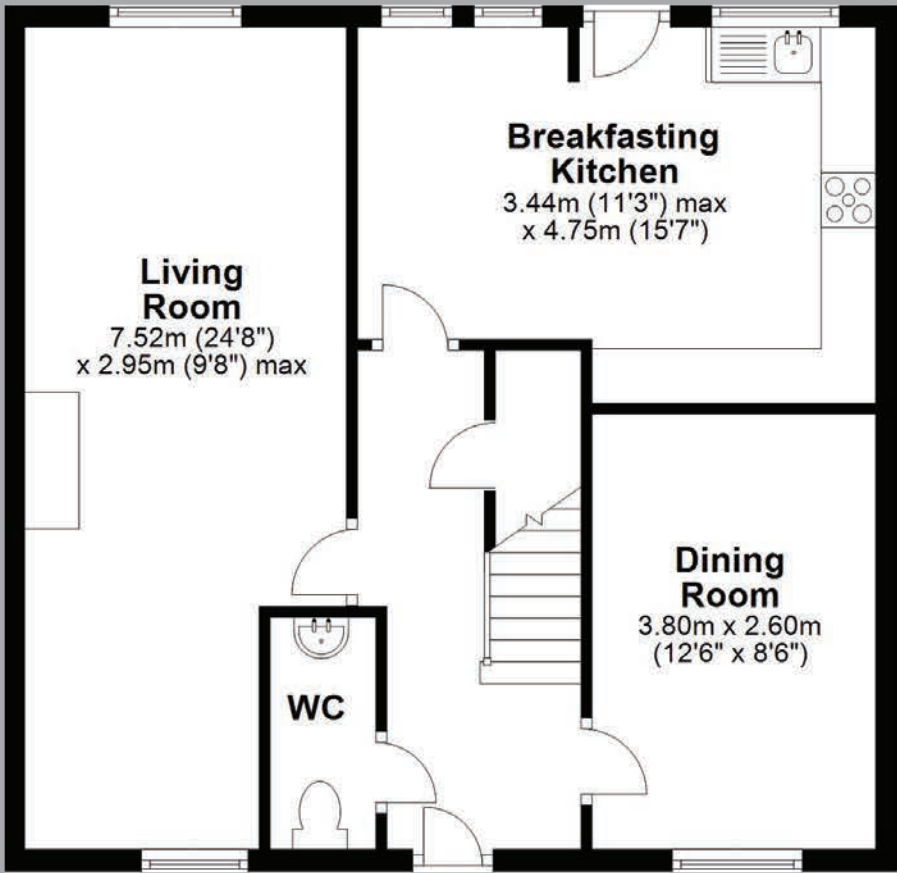
From the kitchen, an attractive stable style door leads out to the west facing garden which has pleasant seating areas positioned in the north west corner ensuring they benefit from plenty of sun throughout the day. The gardens are predominately laid to lawn and have a path leading from the door to the rear gate.

A wooden gate provides access down the side of the property and out to the front. There is external power as well as outside tap. Various flowerbeds provide a lovely amount of colour and space for personalisation and a gravelled area offers more variety.

The garage (2.75m x 5.5m) with up and over style door, is located at the foot of the garden and benefits from external power and lighting. There is also driveway parking available in front of the garage.



Floor Plans





Telephone: 01434 632 080

Email: home@antonestates.co.uk

Website: www.antonestates.co.uk

Social Media: [@antonestates](#)

Address: 19 Middle Street, Corbridge, Northumberland, NE45 5AT

- These particulars do not form any part of any offer or contract.
- They are intended to give a fair description of the property, but neither Anton Estates nor the vendor accept any responsibility for any error they may contain, however caused. Any intending purchaser must therefore satisfy themselves by inspection or otherwise as to their correctness.
- Neither Anton Estates nor any of their employees has any authority to make or give any further representation or warranty in relation to this property.