

Leasehold House For Sale

Asking Price £425,000

Rose Court, Nursery Road, Pinner, HA5 2AR



Property Features

- Garage in Nearby Block
- Family bathroom
- Communal Gardens
- Leasehold (900 Plus Years)
- Gas Central Heating
- Residence Parking
- Ideal for 1st Time Buyer or Investor
- EPC Rating C

Property Description

We are proud to present this three bedroom terraced house located in sought after location close to Pinner High Street and Northwood Hills. The house benefits from 3 bedrooms, one Bathroom, Separate Kitchen, Gas Central Heating, Double Glazing, Residential Parking and detached brick built garage in the block. The property will benefit further from modernisation and could be an ideal project for investor or someone looking to make this a family home.

Externally the communal gardens are well maintained with mainly laid lawn with shrubs and trees.

The area is well furnished with restaurants, coffee shops and shopping facilities. The closest tube station is on metropolitan line located approx. 0.6 miles away and there are lots of reputable primary and secondary school options with in one mile radius.

Lease Details

- Over 900 Years Lease Remaining
- No Ground Rent
- Service Charges Per Annum is £780.00

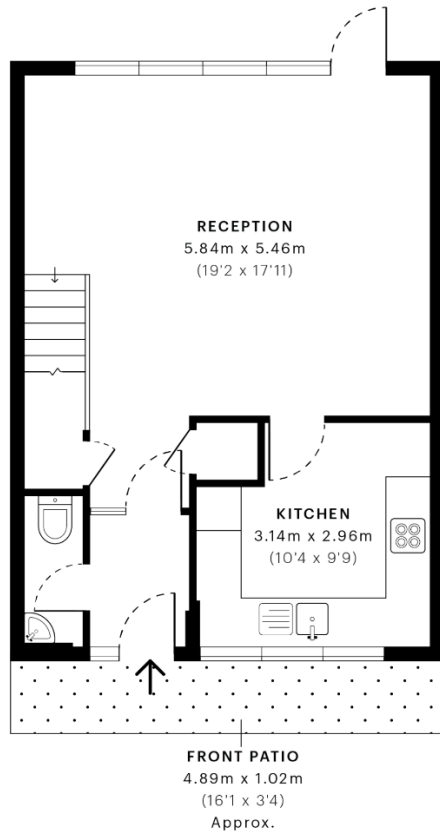


Rose Court, HA5

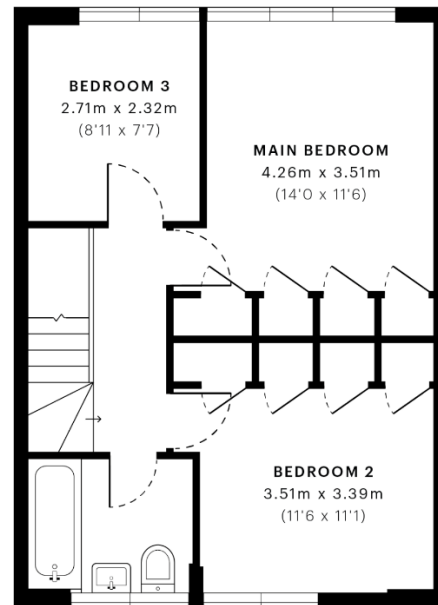
CAPTURE DATE 14/04/2021 LASER SCAN POINTS 2,406,507

GROSS INTERNAL AREA

84.14 sqm / 905.68 sqft



— Ground Floor




— First Floor

 GROSS INTERNAL AREA (GIA)
The footprint of the property
84.14 sqm / 905.68 sqft

 NET INTERNAL AREA (NIA)
Excludes walls and external features
Includes washrooms, restricted head height
77.44 sqm / 833.56 sqft

 EXTERNAL STRUCTURAL FEATURES
Balconies, terraces, verandas etc.
0.00 sqm / 0.00 sqft

 RESTRICTED HEAD HEIGHT
Limited use area under 1.5 m
0.00 sqm / 0.00 sqft



Spec Verified floor plans are produced in accordance with Royal Institution of Chartered Surveyors' Property Measurement Standards. Plots and gardens are illustrative only and excluded from all area calculations. Due to rounding, numbers may not add up precisely. All measurements shown for the individual room lengths and widths are the maximum points of measurements captured in the scan.

IPMS 3B RESIDENTIAL 82.71 sqm / 890.28 sqft
IPMS 3C RESIDENTIAL 78.86 sqm / 848.84 sqft

SPEC ID 606f07a1ca5b0f0dcd3ca4e1

* All measurements are approximate

DISCLAIMER PROPERTY DETAILS

These particulars, whilst believed to be accurate are set out as a general outline only for guidance and do not constitute any part of an offer or contract. Intending purchasers should not rely on them as statements or representation of fact, but must satisfy themselves by inspection or otherwise as to their accuracy. We have not carried out a detailed survey nor tested the services, appliances and specific fittings. Room sizes should not be relied upon for carpets and furnishings. The measurements given are approximate. No person in this firm has the authority to make or give any representation or warranty in respect of the property.