



# Village Estates

Independent Estate Agents & Mortgage Advisors



*1 Greenfinch Avenue*

*Broadwood*

*G68 9GB*

# 4 Bedroom Detached Villa

Hallway • Lounge • 2<sup>nd</sup> Public Room • Kitchen • Dining Area • Utility • W.C  
4 Double Bedrooms • En-Suite • Bathroom  
Double Detached Garage • Driveway • Gardens

Village Estates are delighted to welcome to the market this stunning 4 bedroom detached villa in the much sought after Broadwood area of Cumbernauld, situated on a beautiful plot with views onto Broadwood Loch. Internally the property comprises of a welcoming hallway with glass balustrade. The Hallway leads to a fabulous size lounge and to a stunning fully fitted kitchen which include a generous range of base and wall mounted units with integrated oven, grill, hob and hood with open access to a fantastic size dining area with patio doors leading out to the rear garden. The kitchen also leads to a spacious utility room with access to the side. The accommodation continues with a 2<sup>nd</sup> public room which can ideally be used as an office, playroom or 5<sup>th</sup> bedroom. The lower level is complete with a modern W.C.

The upper level accommodates 4 generous size double bedrooms with bedrooms 1, 2 and 3 boasting excellent storage. The master leads to a fabulous En-Suite Shower Room. The accommodation is complete with a stunning family bathroom comprising of a 4 piece suite with free standing bath and separate walk in shower.

The property also benefits from fully double glazing, a system of gas central heating and a floored loft boasting further storage. Externally the property sits on a beautiful plot with well maintained gardens to the front and rear. There is a large monobloc driveway to the side of the property leading to a double detached garage. Viewing is essential to fully appreciate the accommodation on offer on this stunning 4 bedroom detached villa which is in truly walk in condition

- Hallway
- Lounge 17'01" x 11'09"
- 2<sup>nd</sup> Public Room 10'02" x 8'04"
- Kitchen 15'04" x 12'05"
- Utility
- Dining Area 11'07" x 8'09"
- W.C
- Bedroom No. 1 11'04" x 10'07"
- Master En-Suite
- Bedroom No. 2 10'01" x 9'01"
- Bedroom No. 3 11'01" x 9'09"
- Bedroom No. 4 9'06" x 7'09"
- Bathroom

These particulars are believed to be correct and do not form part of any contract. Measurements have been taken using a sonic tape and may be subject to a small margin of error. Electrical/Gas fittings have not been tested and are assumed to be in working order. Photographs are included for information purposes only and it should not be assumed that any item is included in the purchase price of the property.

Photographs are included for information purposes only and it should not be assumed that any item is included in the purchase price of the property.

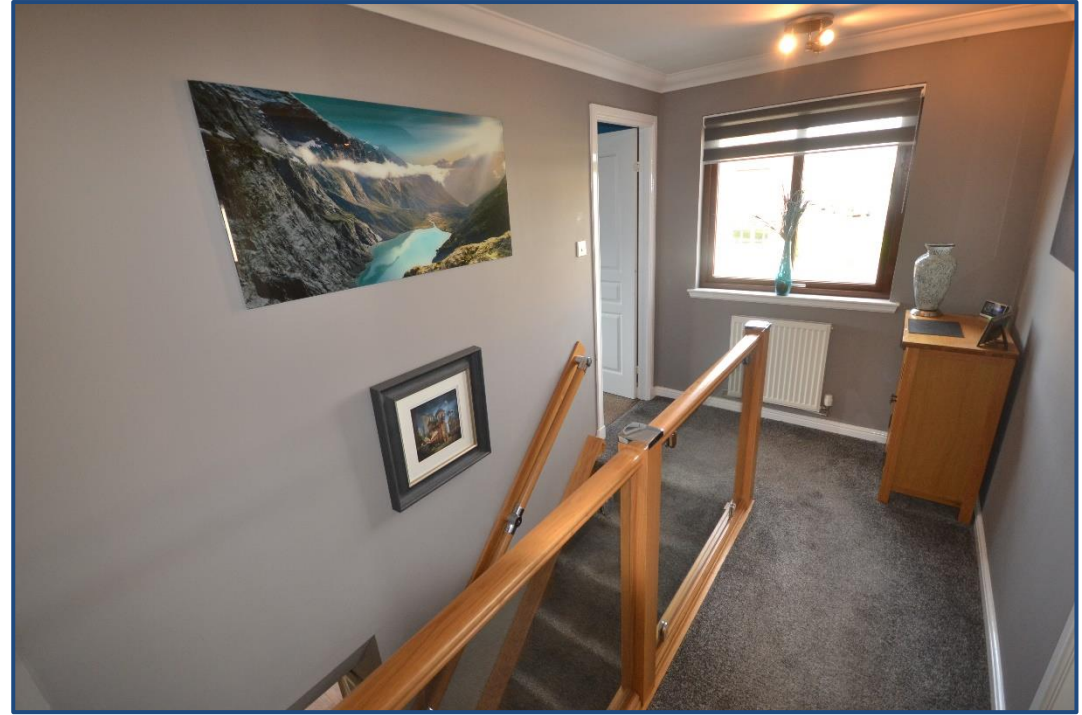
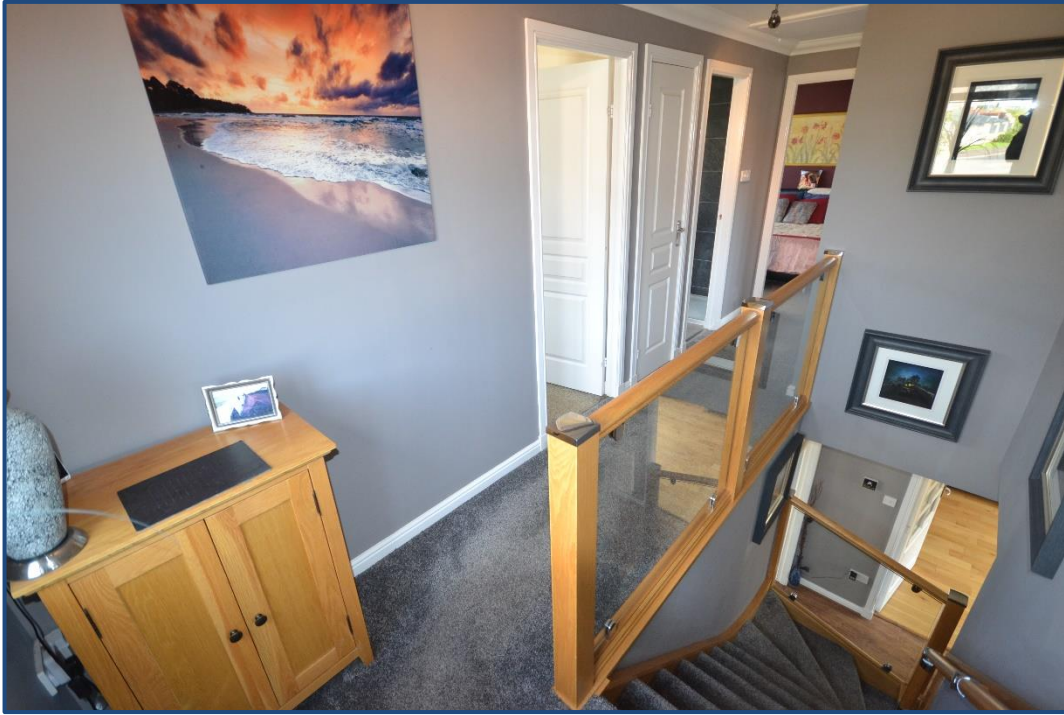




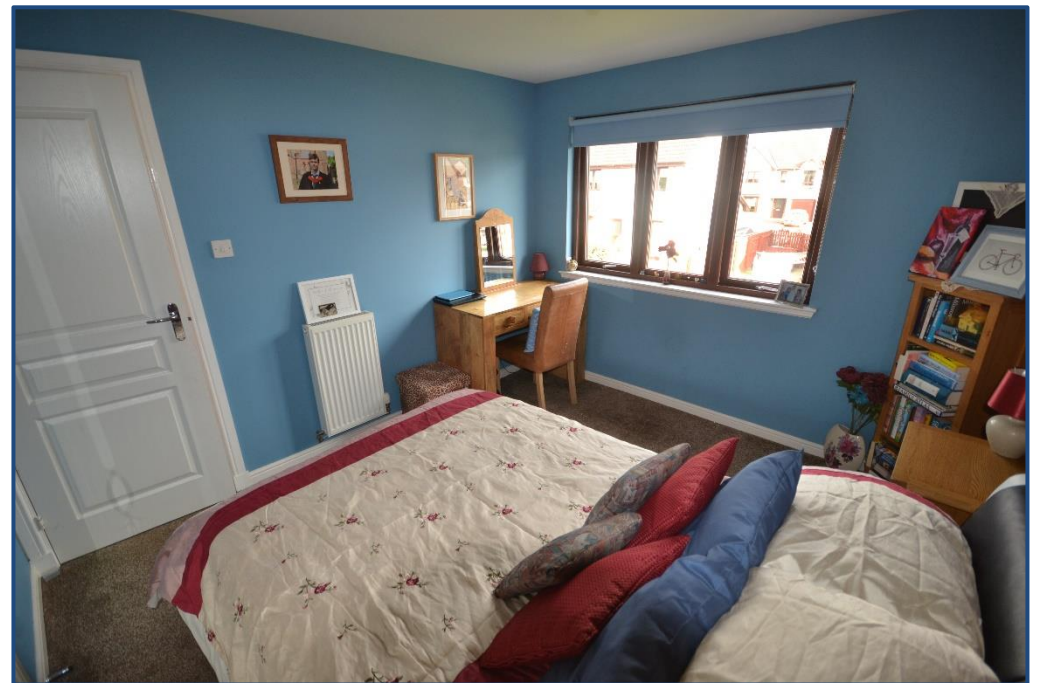
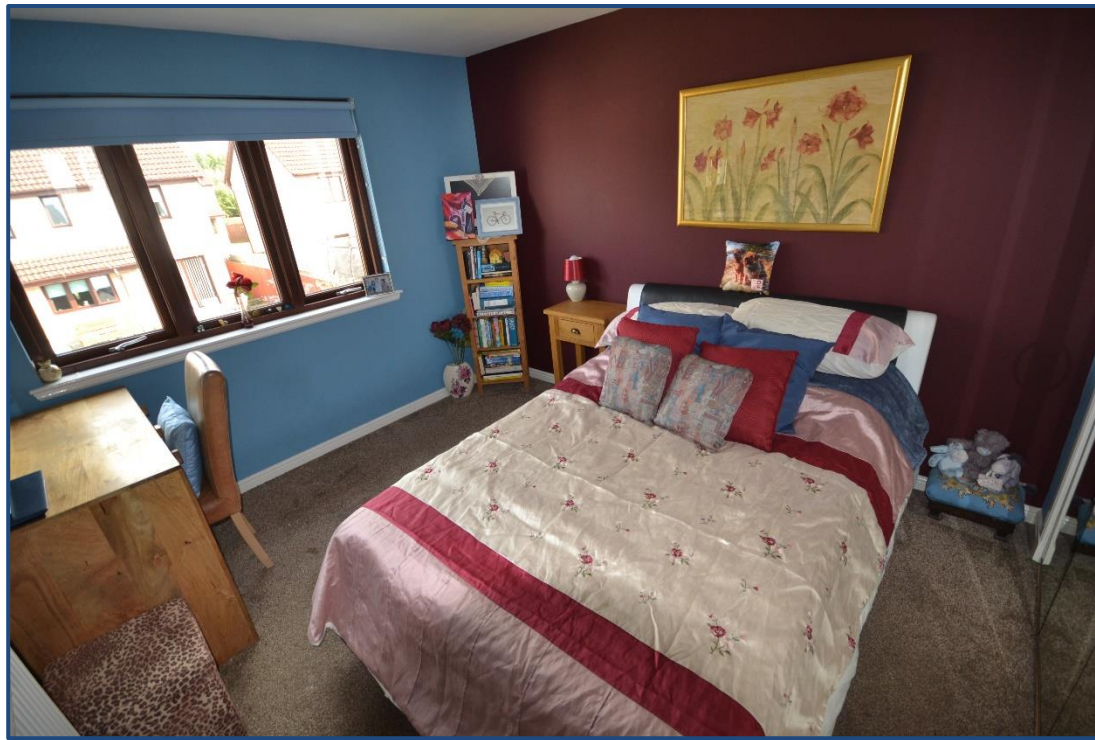




















## **Selling Your Property !!**

**Contact us Now for a Free Valuation - We Offer a Full Sales & Marketing Package for a Very Competitive Fee**

## **Mortgage**

**Village Estates Mortgages offers a full range of Mortgage and Re-Mortgage facilities**

**Home Reports, Surveys, Solicitors can also be arranged**

### **Office Opening Hours**

**9am – 5.30pm Monday – Friday**

**10am – 1pm Saturday (Cumbernauld Only)**

**Please contact either of our Branch Tel. Nos. during Saturday opening times for all enquiries**

**2 The Wynd, The Village, CUMBERNAULD**

**Tel: 01236 636101**

**Zoopla.co.uk**

**148-150 Cumbernauld Road, MUIRHEAD**

**Tel. 0141 779 9024**

 **rightmove.co.uk**

**www.VE-Estates.com**

**s1homes.com**