



59 SAUCHIE ROAD, CRIEFF, PH7 4EL

OFFERS OVER £145,000

59 SAUCHIE ROAD, CRIEFF, PH7 4EL

Irving Geddes are delighted to offer for sale this well proportioned 2 bedroom semi-detached bungalow situated in a mature residential area of Crieff. The property is presented in true move-in condition.

A spacious layout comprising **Entrance Hall, Lounge, Kitchen, Two Bedrooms & Family Bathroom..**

Warmed by gas fired central heating and double glazed throughout.

Externally the property enjoys low maintenance garden grounds to the front & rear. The garden is laid mainly with stone chippings and paviour slabs.

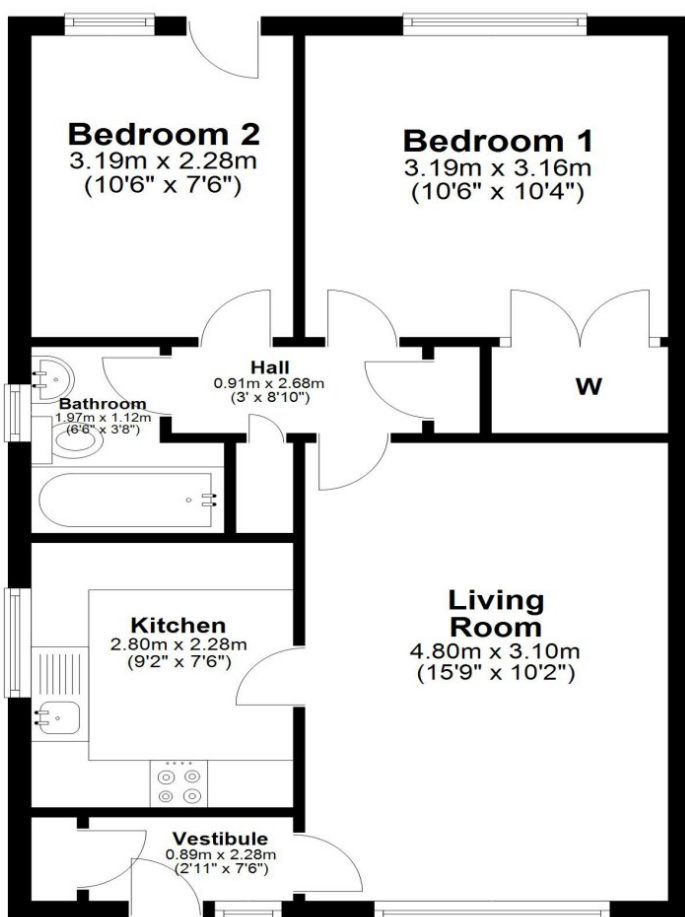
A driveway to the side is laid with tarmac and provides ample off street parking and leads to a single garage with power & light. A property likely to have broad appeal, early viewing is advised.











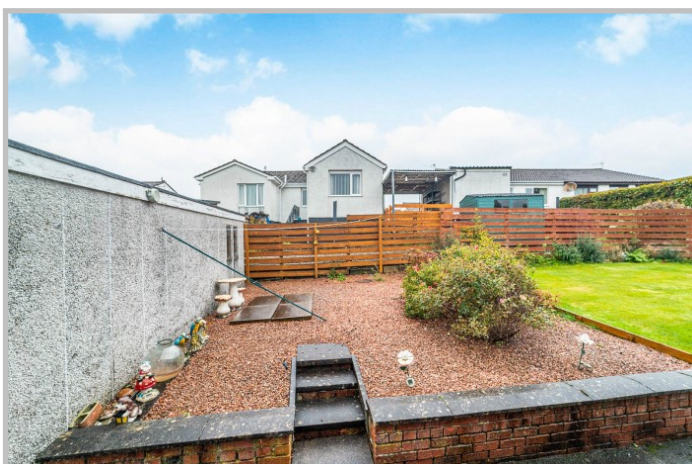
Energy Performance: Rated 'D' for efficiency.

Council Tax: Band 'C'.

Video Link: <https://youtu.be/M6yrD7jHwrA>

Irving Geddes
W.S. • Solicitors • Estate Agents

These particulars are believed to be correct, but their accuracy is not guaranteed and they do not form part of any contract.
All measurements shown are approximate only.



Thinking of selling?

Call us now for a free valuation for your own property

Crieff

25 West High Street, PH7 4AU
Tel: 01764 653771

Comrie

1 Drummond Street, PH6 2DW
Tel: 01764 670325

Aberfeldy

6 The Square, PH15 2DD
Tel: 01887 822722