



1 Victoria Terrace  
Clifton, Banbury, Oxfordshire, OX15 0PD



## 1 Victoria Terrace, Clifton, Banbury, Oxfordshire, OX15 0PD

A Most Charming and Characterful Two Bedroom Cottage that has been Sympathetically Extended over the Years, Creating Spacious and Flexible Living Space. Outside are Beautifully Maintained Gardens and Off Street Parking.

The property briefly comprises:

Entrance Lobby, Dining Room, Kitchen, Lounge, Conservatory, Study, Utility / Shower Room, Two Bedrooms and a Bathroom. Outside the property benefits from Off Street Parking, Rear Garden with Paved Seating Area, Shrub & Flower Beds and Mature Hedging and a Pretty Front Garden set back from the pavement.

Clifton is a sleepy hamlet of 75 houses and a pub on the eastern boundary of the parish of Deddington. The river Cherwell marks the parish boundary as well as the boundary between Oxfordshire and Northamptonshire. The M40 is about five miles away at Ardley. The nearest main railway stations are Banbury about 10 miles to the north, or Bicester 10 miles to the east, with a halt at Kings Sutton four miles away. The towpath of the Oxford canal, with its brightly painted, traditional narrow boats, is a popular walk just half a mile away, across the fields. Clifton is rich in native flora and fauna. Foxes, roe and muntjac deer, badgers, hare and rabbits abound along with the sounds of the skylark during the spring and summer. Clifton is a charming and friendly place to live where rural traditions of friendliness and community spirit continue.

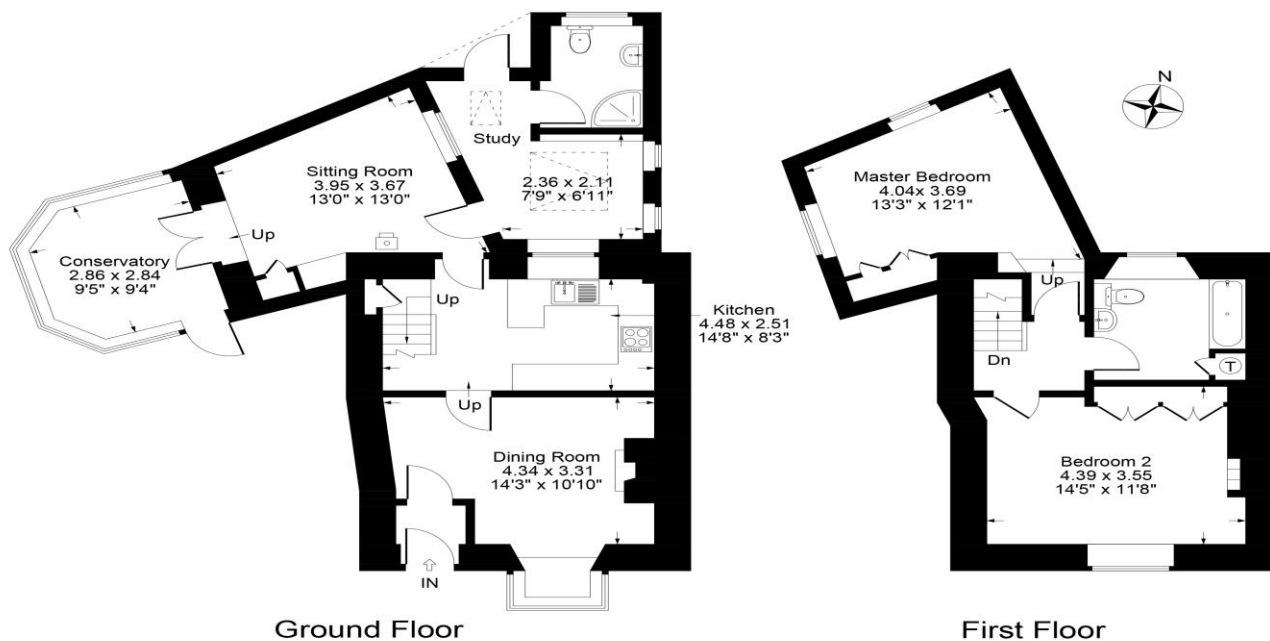






- Entrance Lobby with Tiled Floor & Beamed Ceiling
- Dining Room with Wrought Iron Open Fireplace and Bay Window
- Kitchen with Feature Wooden Ceiling Beams
- Lounge with Freestanding Wood Burner
- Conservatory with Doors to Rear Garden
- Study with Wooden Flooring
- Utility Room / Shower Room
- Two Bedrooms Both with Built In Wardrobes
- Bathroom
- Off Street Parking Area
- Side and Rear Garden with Large Wooden Shed and Pretty Borders
- Front Garden Set Back Off the Pavement

Guide Price: £329,999



**Local Authority**  
Cherwell District Council

**Tenure**  
Freehold

**Additional Information**  
Banbury c. 7 miles  
Bicester c. 10 miles  
Chipping Norton c. 12 miles  
Oxford c. 19 miles  
Birmingham c. 59 miles  
London c. 72 miles

M40 Access c. 6 miles

London via Bicester North or  
Banbury, c. 1 hour.

**Mark David**  
ESTATE AGENTS

Market House, Market Square, Deddington, Oxfordshire, OX15 0SB  
Tel: 01869 338898  
Fax: 01869 338337  
Email: deddington@mark-david.co.uk  
www.mark-david.co.uk

**Important Notice**

Mark David Estate Agents for themselves and their clients give notice that:-

1. They are not authorised to make or give representation or warranty in relation to this property, either on their own behalf or on behalf of the Seller. They assume no responsibility for any statement made in these particulars. These particulars do not form part of any offer or contract and must not be relied upon as statements or representations of fact.
2. Whilst every attempt has been made to ensure the accuracy of the floorplan contained here, measurements of doors, windows, rooms and any other items are approximate and no responsibility is taken for any error, omission, or mis-statement.
3. All areas, measurements or distances are approximate. The particulars are intended for guidance only and are not necessarily comprehensive. A wide angle lens may have been used in photography. Mark David Estate Agents have not tested appliances or services and it should not be assumed that the property has all necessary planning, building regulation and other consents. Buyers must satisfy themselves with the property by inspection or otherwise.
4. Reference to any mechanical or electrical equipment does not constitute a representation that such equipment is capable of fulfilling its function and prospective Buyers must make their own enquiries.
5. They have no responsibility for any expenses or costs incurred by prospective Buyers in inspecting properties which have been sold, let or withdrawn. Applicants are advised to contact the Agent to check availability and any other information of particular importance to them, prior to inspecting the property, particularly if traveling some distance.