



**KINGS GARDENS
WEST HAMPSTEAD NW6
GUIDE PRICE £600,000**

This stunning two double-bedroom ground-floor apartment has been tastefully refurbished to a very high standard and is being offered to the market chain-free.

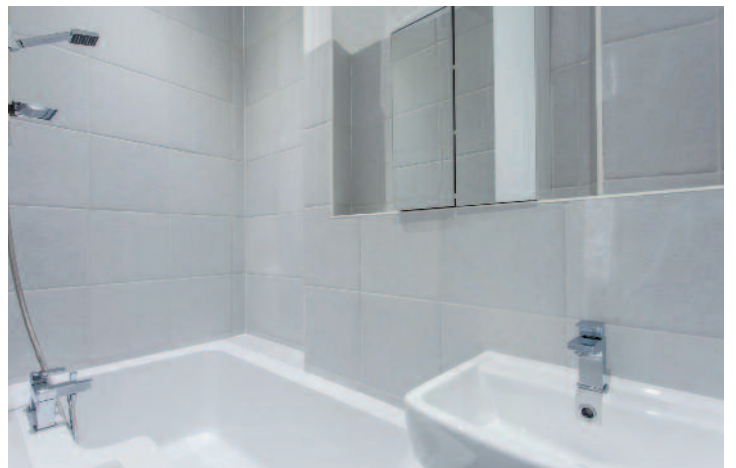
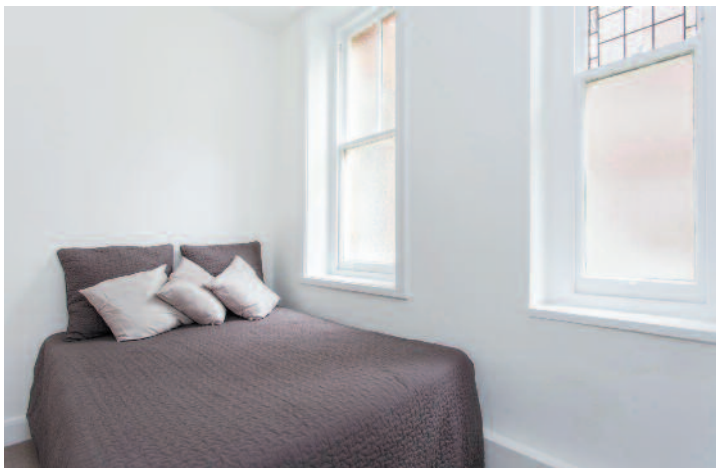
Situated within the imposing and attractive mansion block Kings Gardens, which offers benefits including a porter, a well maintained, landscaped communal garden, a wealth of natural light and high ceilings throughout.

The property comprises a large, separate modern kitchen including high-end appliances, bright reception room, two bedrooms and a modern three piece bathroom with underfloor heating.

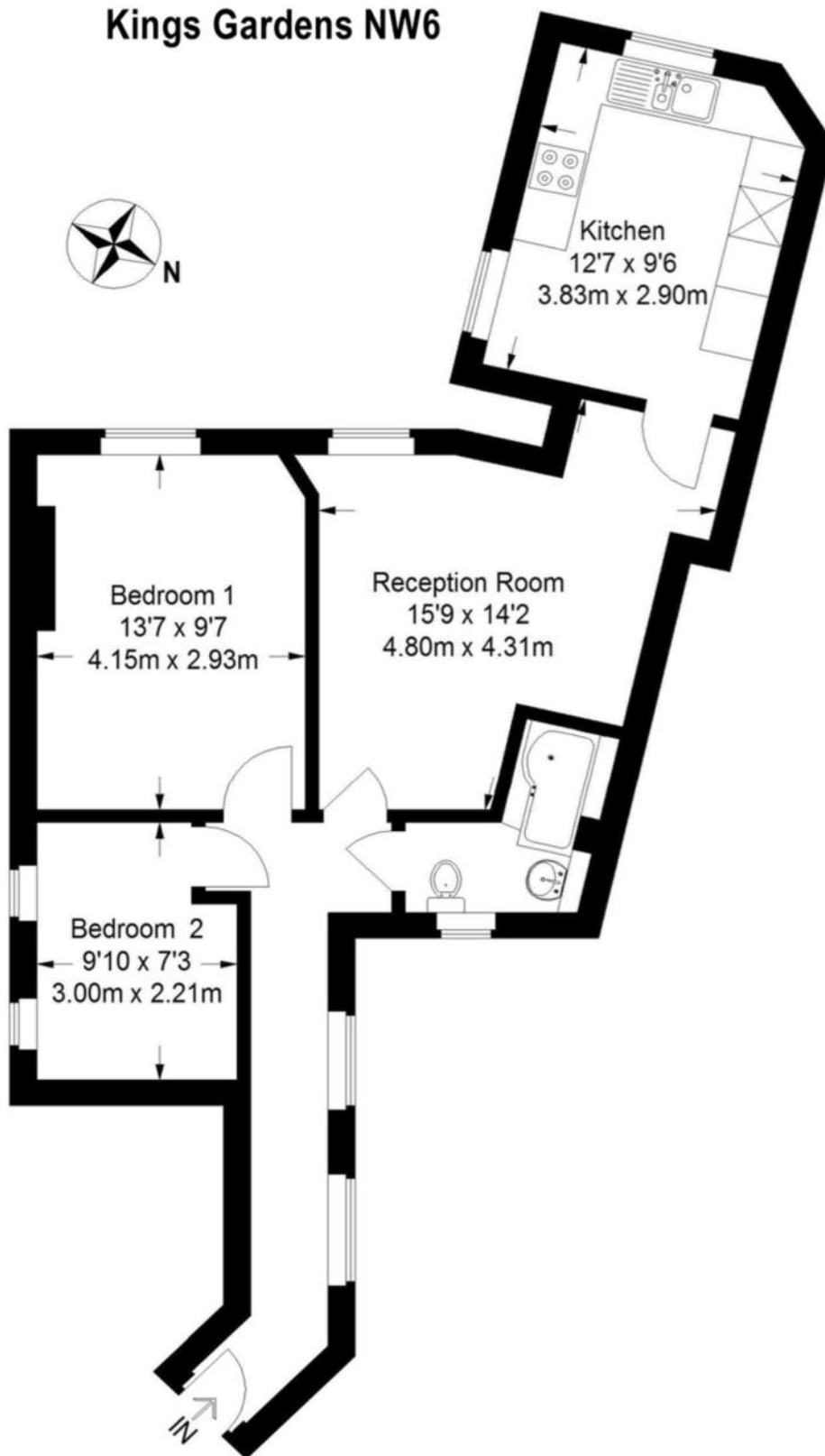
Kings Gardens is ideally located with West Hampstead underground (Jubilee Line) situated just 0.4 miles away and with both the London Overground and Thameslink line also positioned close by, along with the local amenities and further transport links that West End Lane has to offer.

2 Bedrooms – Bathroom – Reception Room – Kitchen –
Residents Parking Zone

KINGS GARDENS
WEST HAMPSTEAD NW6
GUIDE PRICE £600,000



Kings Gardens NW6

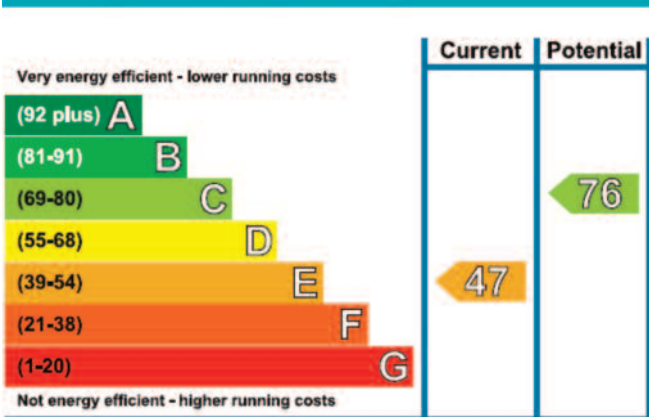


Ground Floor

642 SQ. FT. (59.6 SQ. M.)



Energy Efficiency Rating



©2013 Google Map data ©Google