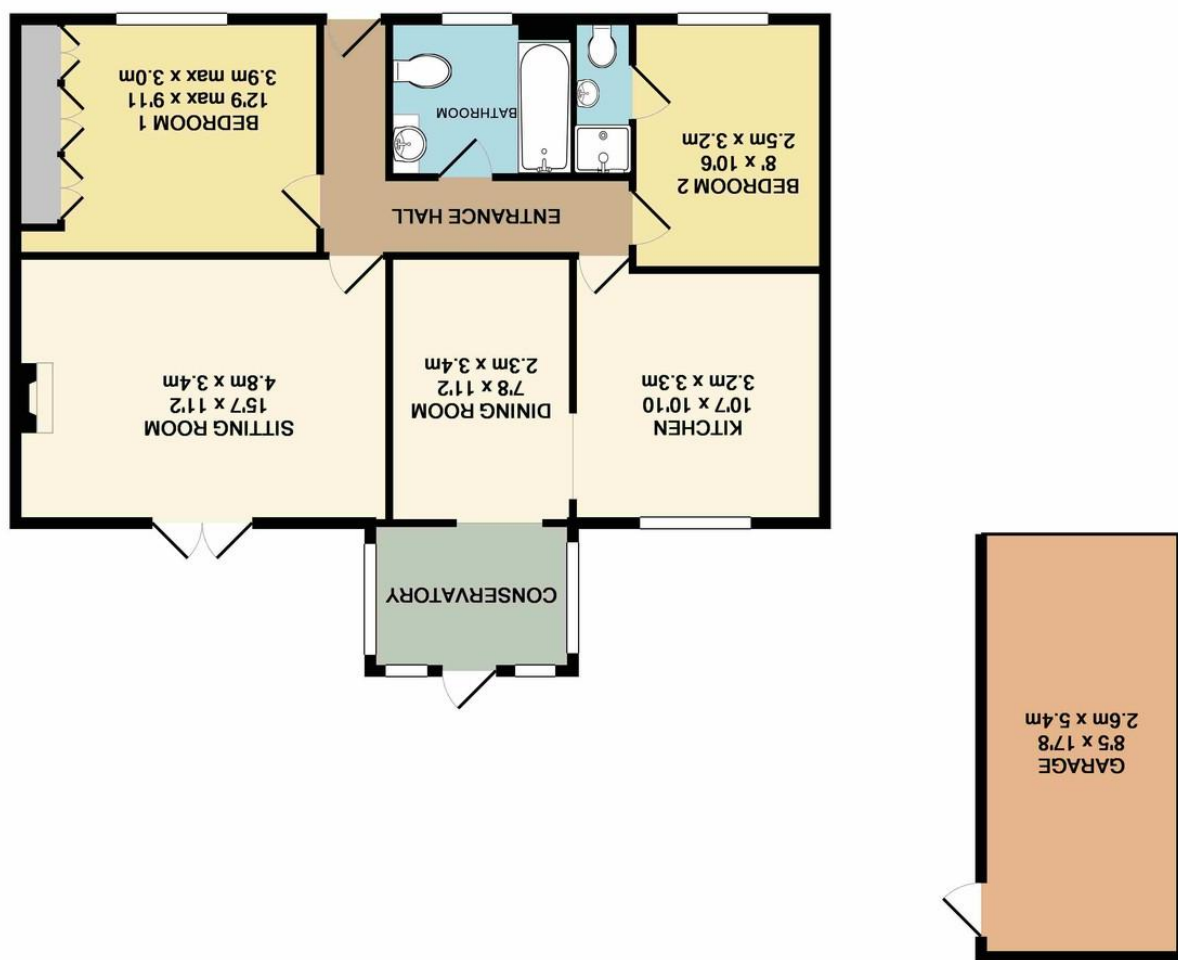


Agents Note: Whilst every care has been taken to prepare these sales particulars, they are for guidance purposes only. All measurements are approximate and for general guidance purposes only and whilst every care has been taken to ensure their accuracy, they should not be relied upon and potential buyers are advised to check the measurements

3 TASKER CLOSE, CORSHAM, WILTSHIRE
TOTAL APPROX. FLOOR AREA 910 SQ. FT. (84.5 SQ.M.)
Schematic Diagram only - Not to scale
Made with Metropix ©2018



3 Tasker Close, Corsham, Wiltshire, SN13 9UF

3 Tasker Close, Corsham, Wiltshire, SN13 9UF

- Two bedrooms (one en suite)
- Super open plan kitchen/dining/garden room
- Level gardens
- NO ONWARD CHAIN
- Quiet cul de sac
- UPVC double glazing and gas central heating
- Garage and ample driveway parking

£290,000

Situation and Description

A superb detached bungalow situated in a small cul de sac within walking distance of amenities. The property benefits from uPVC double glazing, gas central heating, good decorative order and NO ONWARD CHAIN.

The property offers accommodation comprising entrance hall, good sized sitting room opening onto the rear garden, superb open plan kitchen/dining/garden room, master bedroom with built in wardrobes, guest bedroom with en suite shower room and a bathroom with white suite.

Outside

Front

Easily maintainable gravelled garden with ornamental bushes and path to front door. Gated access to rear.

Rear

Well enclosed, level garden with paved patio seating areas, small lawn, timber decked area, trees, ornamental bushes and shrub beds.

Garage

Single unit with up and over door to front, door to garden, power and lighting.

Tasker Close is a small cul de sac built in the 1980's, situated within easy walking distance of the local schools, and community campus incorporating the swimming pool, library, cafe and other leisure facilities. The picturesque high street is only a short walk further on and bus services to bath and Chippenham pick up close by on the Valley road.



Directions

From our office on the High Street turn right onto Pickwick Road, proceed over the first roundabout and at the second roundabout turn left onto Valley Road. Proceed down the hill and take the second right onto Hatton Way and then next left onto Bellott Drive. Turn right into Tasker Close where the property can be found on the left hand side.