

Agents Note: Whilst every care has been taken to prepare these sales particulars, they are for guidance purposes only. All measurements are approximate and whilst every care has been taken to ensure their accuracy, they should not be relied upon and potential buyers are advised to check the measurements

Total area: approx. 147.4 sq. metres (1587.1 sq. feet)



DAVID INGRAM
RESIDENTIAL SALES
www.david-ingram.co.uk
FOR SALE
01249 701900

12 Stone Close, Corsham, Wiltshire, SN13 0QU

DAVID
INGRAM
RESIDENTIAL SALES

12 Stone Close, Corsham, Wiltshire, SN13 0QU

- Modern, well presented detached house
- UPVC double glazing and gas central heating
- Garage and off street parking
- Five bedrooms, two reception rooms
- Good sized kitchen
- Master bedroom with en suite
- Well enclosed gardens

Offers in excess of £325,000

Situation and Description

A well presented detached family home forming part of a small development built by Newland Homes in 2006. The property offers accommodation comprising spacious entrance hall with cloakroom off, dual aspect sitting room opening on to the rear garden, kitchen with modern units, dining room, utility room, master bedroom with en suite shower room and built in wardrobes, three double bedrooms, one single bedroom and a bathroom with white suite.

Outside

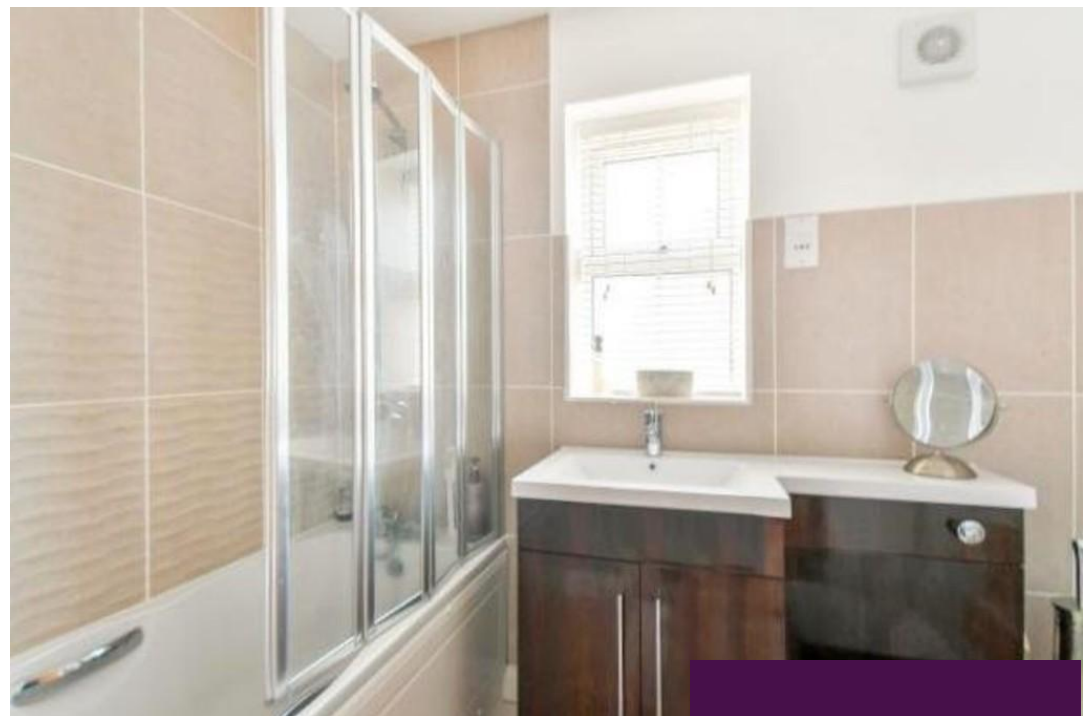
There are well enclosed gardens to the side and rear comprising of a paved patio seating area, slightly sloping lawn and gravelled area. Gated access to front.

Garage

Single unit with up and over door to front, door to garden, power and lighting. Parking in front for one car.

Stone Close is a small development on the outskirts of Corsham built by Newland Homes in 2006. Corsham's picturesque and historic high street which is within easy access offers a variety of interesting shops, cafes and restaurants. Other local amenities include junior and comprehensive schooling, doctors surgery and leisure centre. Ideally placed for access to the A4, the Georgian city of Bath is within 9 miles with it's vast array of shopping, cultural and leisure amenities and high speed rail service to London, which is also available at nearby Chippenham. There is also fast road access to the M4 motorway via junction 17.

EPC Rating - C



Directions

Leave our Corsham office on the High Street, turn right onto the Pickwick Road and proceed towards Box. At the mini roundabout just after the Hare and Hounds bear left and proceed straight over the next two mini roundabouts. After approximately half a mile, turn left onto the Bradford Road signposted Bradford on Avon, turn right into Stone Close where the property can be found on the left hand side.