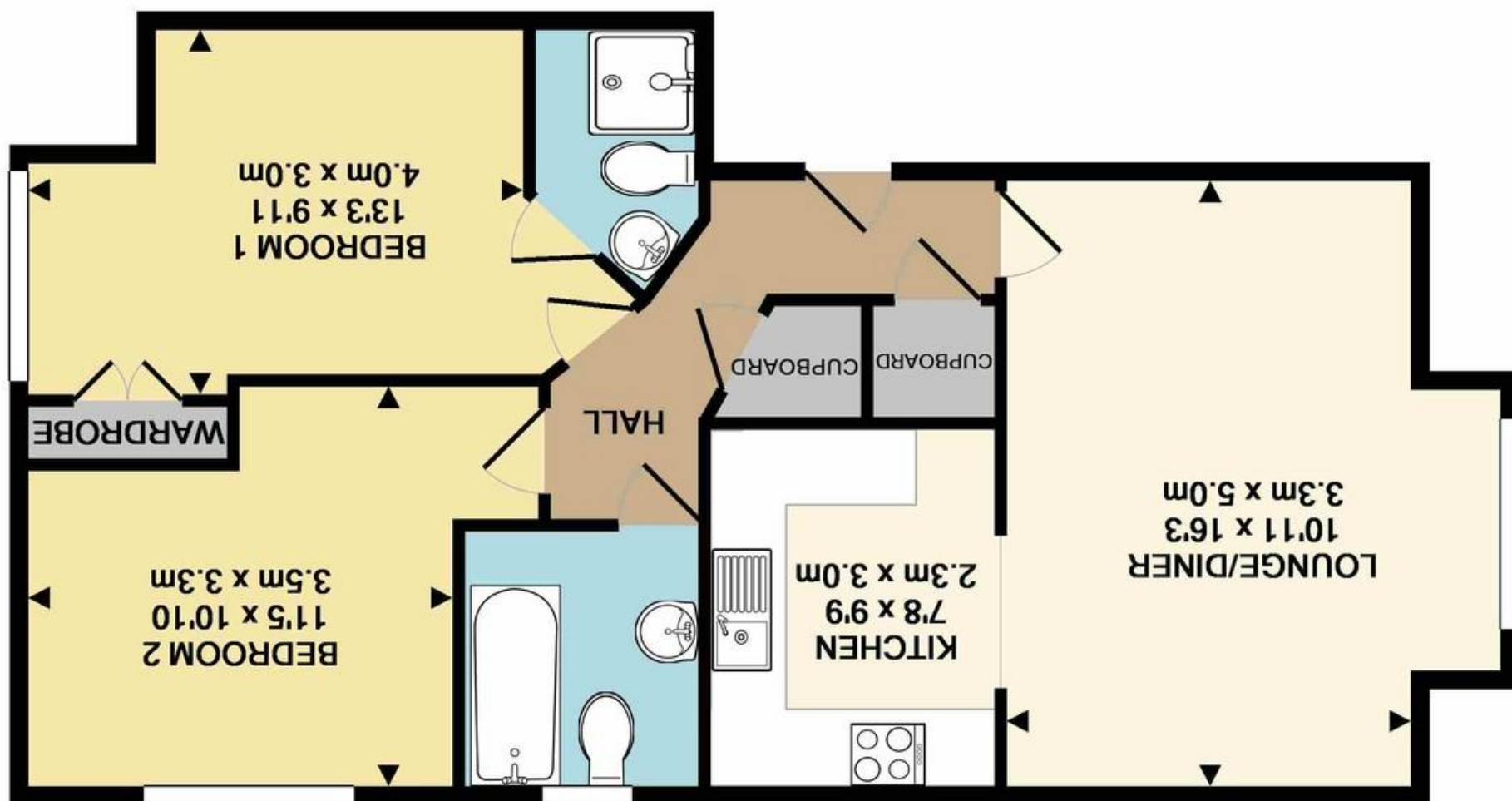


Agents Note: Whilst every care has been taken to prepare these sales particulars, they are for guidance purposes only. All measurements are approximate and whilst every care has been taken to ensure their accuracy, they should not be relied upon and potential buyers are advised to recheck the measurements

TOTAL APPROX. FLOOR AREA 671 SQ.FT. (62.3 SQ.M.)
Schematic Diagram only - Not to scale
Made with Metropix ©2019



29 Market Mead, Chippenham, SN15 3RZ

David Ingram

RESIDENTIAL

29 Market Mead, Chippenham, Wiltshire, SN15 3RZ

Offers in Excess of £150,000

Situation and Description

****FIRST TIME/INVESTMENT OPPORTUNITY**EXCELLENT TENANT IN SITU AT
£650pcm** NO ONWARD CHAIN**

Situated within a stones throw of Chippenham mainline train station, and within easy walking distance of the town centre amenities, this well presented modern 2 double bedroom top floor apartment includes entrance hall, lounge/diner, kitchen with oven and hob, bathroom, two good size double bedrooms, with the master bedroom benefiting from an en-suite shower room. Gas central heating throughout.

Externally there is an allocated parking space.



Directions

From the Bridge Centre roundabout proceed onto the A4 Bath Road, signposted for the town centre and rail station. At the mini roundabout with the High Street on your right, turn left and then right at the next mini roundabout onto Station Hill. Continue up the hill onto Cocklebury Road, pass Wiltshire College on your right and you will find Market Mead just around the corner on the right hand side.