



Seymours



Cuckoo Crescent Camberley, GU17 0SB £550,000

Arrange a viewing: 01276 534100

Property Details

 4 bedrooms

 2 baths

 EPC Rating TBC



 Station Name (0.0 miles)

- Four bedrooms
- Bathroom and two en suite shower rooms
- Living room
- Kitchen with granite worksurfaces
- Large Living room
- Cloakroom
- Rear garden
- Driveway parking with garage
- Ideally located between Yateley and Blackwater

A beautifully presented four bedroom detached family home with elegant accommodation arranged over three floors. This superb home is located on the popular Swan Lake View development with scenic walks around the lake and a children's play area. It offers a spacious hallway leading to a superb modern kitchen with granite worksurfaces and integrated appliances and a large Living room with direct access out onto the rear garden. The upstairs space is arranged over two floors with the main bedroom on the second floor also benefiting from a dressing area and en suite shower room. On the first floor the second bedroom also benefits from a modern shower room and there are two further bedrooms and a family bathroom. To the front of the property is driveway parking leading to an attached single garage. The rear garden is mainly laid to lawn. The property is conveniently located for both Yateley and Blackwater where there can be found an abundance of shops, pubs and amenities as well as good local



Cuckoo Crescent
 Approximate Gross Internal Area = 126.1 sq m / 1358 sq ft
 (Excluding Eaves)
 Garage = 18 sq m / 194 sq ft
 Total = 144.1 sq m / 1552 sq ft

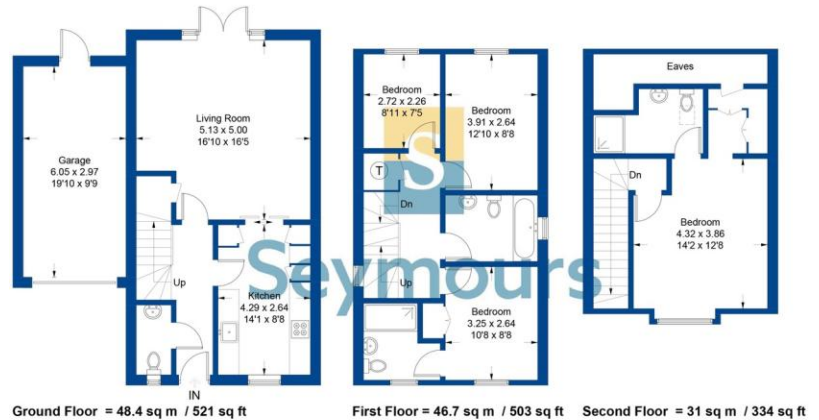


Illustration for identification purposes only, measurements are approximate, not to scale. Floorplans@sketch.com © 2021 (ID816559)