



HINTON & DOWNES
residential

SALES, LETTINGS & MANAGEMENT

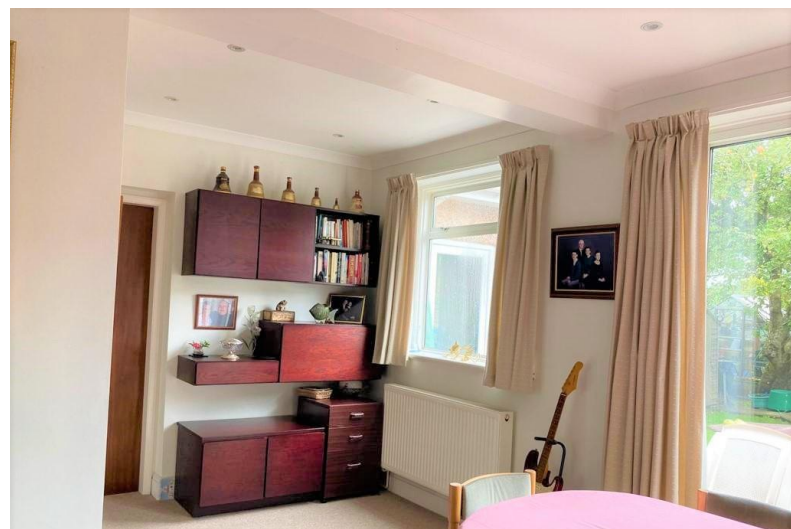
Woodcroft Avenue

Stanmore HA7 3PS

- Extended four bedroom semi detached house
- Cul-de-sac location close to facilities
- Gas central heating, double glazed windows and off street parking
- Offered for sale in good condition

£650,000

EPC Rating '46'





Property Description

A WELL PRESENTED FOUR BEDROOM EXTENDED SEMI DETACHED HOUSE WITH GARAGE AND OWN DRIVEWAY located on a highly sought after road within easy reach of facilities in the surrounding area. This four bedroom property benefits from gas central heating, double glazed windows and a tremendous rear garden extending to around 60ft in length. Property in this particular location is rarely available and as such an internal inspection comes highly advised.





**WOODCROFT AVENUE
STANMORE HA7**



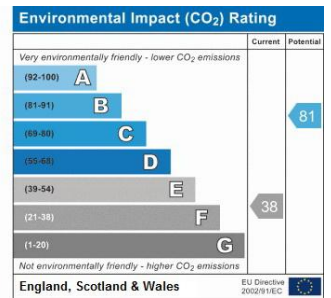
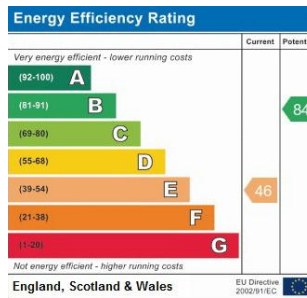
GROUND FLOOR

FIRST FLOOR

APPROX. GROSS INTERNAL FLOOR AREA 1209.64 SQ. FT / 112.38 SQ. M

APPROX. GROSS INTERNAL FLOOR AREA INCLUDING THE GARAGE 1420.83 SQ. FT / 132.00 SQ. M

WHILST EVERY ATTEMPT HAS BEEN MADE TO ENSURE THE ACCURACY OF THE FLOOR PLAN CONTAINED HERE, MEASUREMENTS OF DOORS, WINDOWS, ROOMS AND ANY OTHER ITEMS ARE APPROXIMATE AND NO RESPONSIBILITY IS TAKEN FOR ANY ERROR, OMISSION, OR MIS-STATEMENT. THIS PLAN IS FOR ILLUSTRATIVE PURPOSES ONLY AND SHOULD BE USED AS SUCH, BY ANY PROSPECTIVE PURCHASER. FLOOR PLANS ARE NOT DONE TO "SCALE".



399 High Road
Harrow
Middlesex
HA3 6EL

www.hintonanddownes.co.uk
sales@hintonanddownes.com
0208 861 1066

Agents Note: Whilst every care has been taken to prepare these sales particulars, they are for guidance purposes only. All measurements are approximate and for general guidance purposes only and whilst every care has been taken to ensure their accuracy, they should not be relied upon and potential buyers are advised to recheck the measurements.