

Head Office:
Dixon Kelley Estate Agents
1 Penn Court
Station Road, West Moors
Dorset. BH22 0JJ

DORSET PARK HOMES

DRAFT

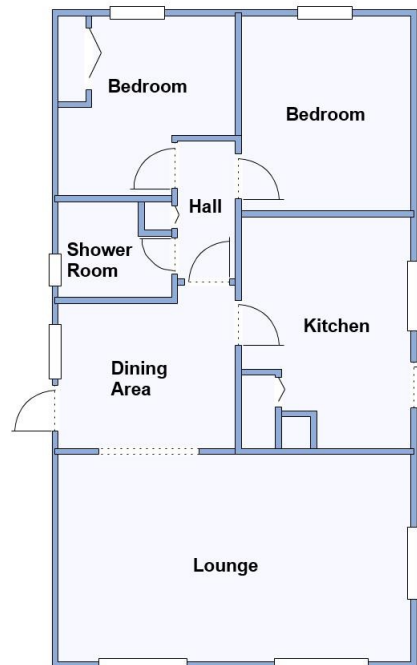
www.dorsetparkhomes.com

Telephone: 01202 877511

53 Stour Park, New Road, Bournemouth, Dorset. BH10 7DE



Spacious Park Home with Wonderful Garden



This drawing has been prepared for diagrammatic purpose only. Not to scale

2 Bedroom Park Home approx 36' x 20'

Accommodation & approximate room dimensions:

- Omar 'Southdown' Park Home circa 1989
- Lounge: approx 19'4" x 11'4". Feature fireplace with gas fire & back boiler. Vaulted ceiling & bay windows.
- Kitchen: approx 12'9" x 9'3". Range of base & wall units. Built-in oven, hob & cooker hood. Space for washing machine, dishwasher & tall fridge/freezer. Airing cupboard. Door to garden.
- Bedroom 1: approx 10'9" x 9'4". Wardrobe arrangement.
- Bedroom 2: approx 9'10" x 9'4" max. Fitted wardrobe with adjoining dresser unit.
- Shower Room: Shower cubicle. wash basin & WC. Chrome heated towel rail.
- Gas Central Heating & PVCu Double-Glazing
- Parking on Plot.
- Delightful Sunny Garden.
- Age restriction 60+. No Pets
- Well maintained Residential Park close to amenities & with easy access to Bournemouth & Poole.
- No Chain!

Close to Amenities



Kitchen



Dining Area



Lounge



En-Suite Shower Room

Pitch Fee: Approx £192.25 per month plus £9 Water per month
Subject to Annual Review
Council Tax Band: 'A' **Tenure: 1983 Mobile Homes Act Agreement**

Price £160,000

VIEWING STRICTLY BY APPOINTMENT WITH THE VENDOR'S AGENT Dorset Park Homes 01202 877511

IMPORTANT NOTE: These particulars are believed to be correct but their accuracy is not guaranteed. They do not form part of any contract. Nothing in these particulars shall be deemed to be a statement that the property is in good structural condition or otherwise, nor that any of the services, appliances, equipment or facilities are in good working order or have been tested. Purchasers should satisfy themselves on such matters prior to purchase Ref.W04826

The recommended specialist in Park Home sales
Proprietor: Simon Dixon

