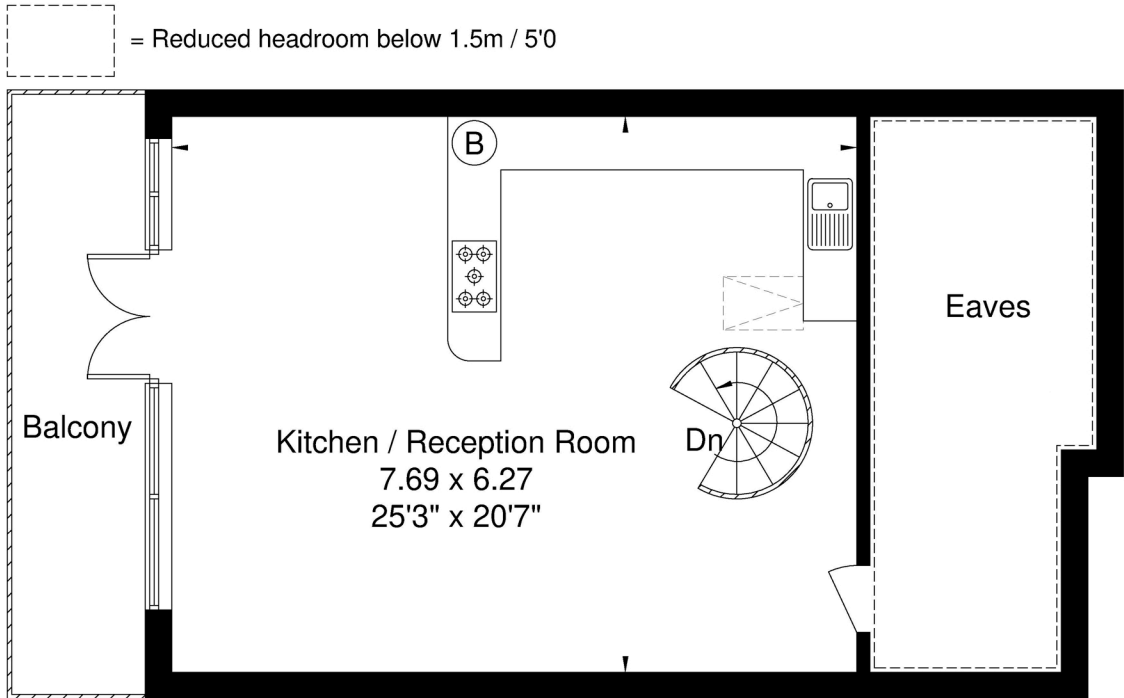
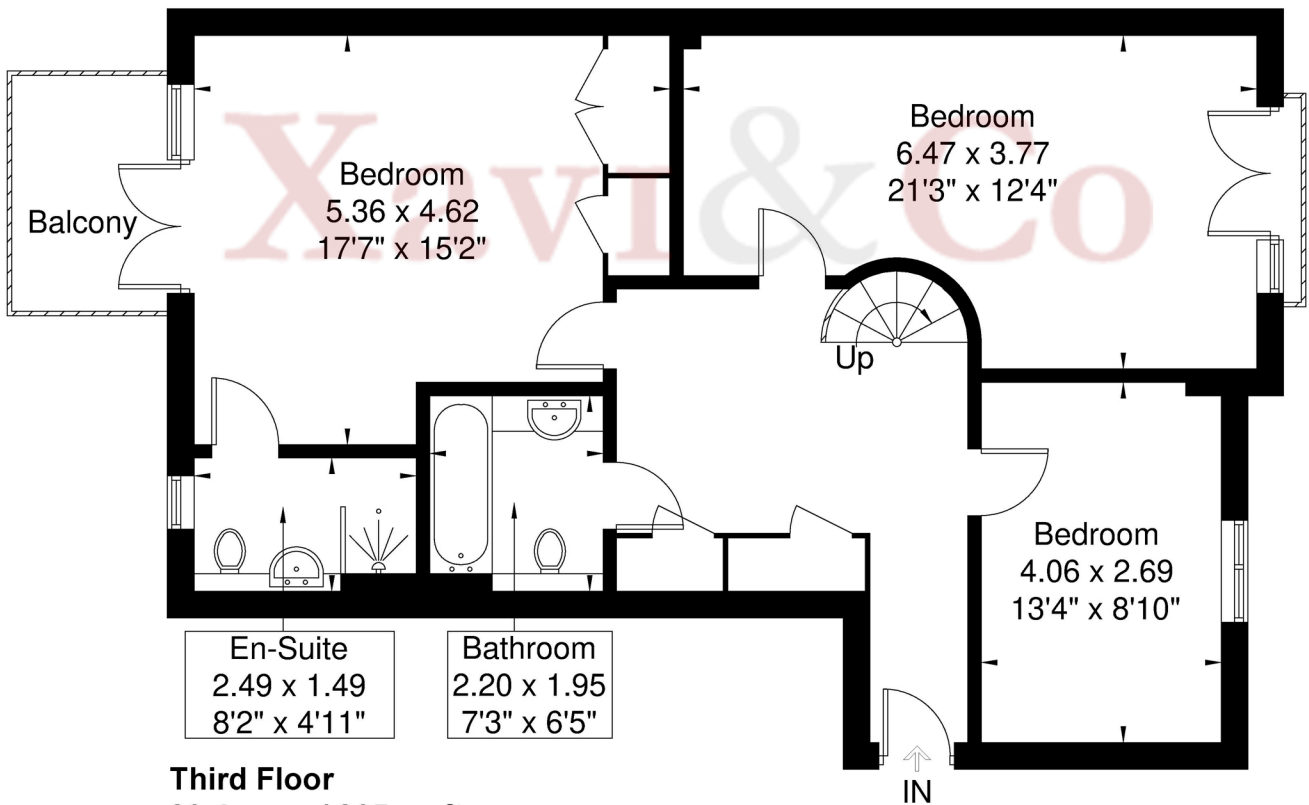


Adams Quarter

Approximate Gross Internal Area = 128.5 sq m / 1383 sq ft
 Eaves / Reduced Headroom = 14.9 sq m / 160 sq ft
 Total = 143.4 sq m / 1543 sq ft



Fourth Floor
48.1 sq m / 518 sq ft
Eaves Storage /
Reduced Headroom
14.9 sq m / 160 sq ft



Third Floor
80.4 sq m / 865 sq ft

Although every attempt has been made to ensure accuracy, all measurements are approximate.
 The floorplan is for illustrative purposes only and not to scale.