



Victoria Avenue, offers in the region of £340,000

- Detached
- Larger than average plot
- Garage
- Sought after location
- Outbuildings
- EPC Rating: C



3 1 2



About the property

A superb and rare opportunity to acquire this extended three-bedroom detached Edwardian home, situated on a deceptively spacious plot in one of the area's most sought-after locations. This characterful property offers generous accommodation throughout and includes multiple reception rooms, a garage, a variety of outbuildings, and off-road parking. It presents an exciting chance for buyers looking to modernise a period home while retaining its charming original features.

This distinctive Edwardian home, with its blend of original features and modern upgrades such as a newly replaced roof, provides a unique opportunity for buyers to create their ideal home in a prime location. Early viewing is strongly advised to appreciate the full scope and charm of this exceptional property.



Accommodation

Summary

A Rare and Superb Opportunity - Detached Edwardian Home on a Generous Plot in a Prime Location

A truly rare opportunity to acquire this extended three-bedroom detached residence, occupying a deceptively large plot and located in a highly sought-after area. The property offers spacious accommodation with multiple reception rooms, a garage, outbuildings, and off-road parking.

While the property would benefit from some modernisation, it has already seen key improvements including a recently replaced roof. Retaining much of its original character, this charming home features original wooden flooring, picture rails, bay windows, and decorative coving.

Ground Floor

Upon entering, you are welcomed by a spacious hallway showcasing tiled flooring and period detailing. The formal living room is a bright and airy space, enhanced by a large bay window that floods the room with natural light-ideal for relaxing once your renovations are complete.

The separate dining room, with dual aspect windows to the front and rear, comfortably accommodates a six-seater table, offering the perfect setting for entertaining. Adjacent to this is an open-plan kitchen/diner, providing ample cabinetry and space for informal dining, alongside a useful utility area and a ground floor WC.

First Floor

The first floor offers three well-proportioned bedrooms. Bedrooms one and two are generously sized doubles with space for wardrobes and additional furniture. The third bedroom, while smaller, is perfectly suited as a single bedroom, nursery, or home office.

A recently updated family shower room completes the first floor, fitted with an overhead shower in a corner cubicle, a freestanding wash basin, and a WC.

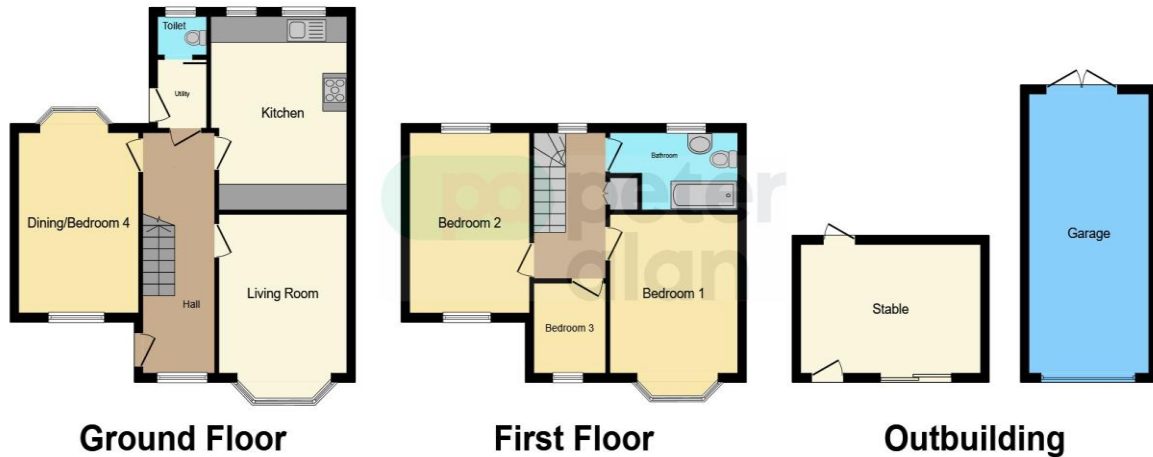
Outside

Externally, the property continues to impress with a generous front garden, including raised beds, mature shrubbery, and space for a greenhouse. A

01633 221892

newport@peteralan.co.uk

Floorplan



This floor plan is for illustrative purposes only. It is not drawn to scale. Any measurements, floor areas (including any total floor area), openings and orientation are approximate. No details are guaranteed, they cannot be relied upon for any purpose and they do not form part of any agreement. No liability is taken for any error, omission or misstatement. A party must rely upon its own inspection(s). Powered by www.focalagent.com

Important Information

Note while we endeavour to make our sales details accurate and reliable, if there is any point which is of particular interest to you, please contact the office and we will be pleased to confirm the position for you. We have not personally tested any apparatus, equipment, fixtures, fittings or services and cannot verify they are in working order or fit for their purposes. Nothing in these particulars is intended to indicate that carpets or curtains, furnishings or fittings, electrical goods (whether wired or not). Gas fires or light fittings or any other fixtures not expressly included form part of the property offered for sale. This computer generated Floorplan, if applicable, is intended as a general guide to the layout and design of the property. It is not to scale and should not be relied upon for dimensions. Tenure: We cannot confirm the tenure of the property as we have not had access to the legal documents. The buyer is advised to obtain verification from their solicitor or surveyor.

Peter Alan Limited is registered in England and Wales under company number 2073153, Registered Office is Cumbria House, 16-20 Hockliffe Street, Leighton Buzzard, Bedfordshire, LU7 1GN. VAT Registration Number is 500 2481 05. For activities relating to regulated mortgages and non-investment insurance contracts, Peter Alan Limited is an appointed representative of Connells Limited which is authorised and regulated by the Financial Conduct Authority. Connells Limited's Financial Services Register number is 302221. Most buy-to-let

pa peter
alan