

**Head Office:**  
Dixon Kelley Estate Agents  
1 Penn Court  
Station Road, West Moors  
Dorset. BH22 0JJ

# DORSET PARK HOMES

**DRAFT**

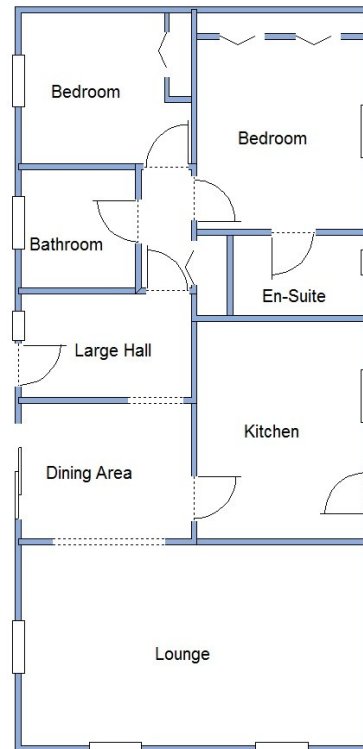
[www.dorsetparkhomes.com](http://www.dorsetparkhomes.com)

**Telephone: 01202 877511**

**150b Pinehurst Park, West Moors, Dorset. BH22 0BS**



**Spacious, Well Presented Park Home on 'Pet Friendly' Park**



This drawing has been prepared for diagrammatic purpose only. Not to scale

## 2 Bedroom Park Home approx 42' x 20'

Accommodation & approximate room dimensions:

- **Spacious Entrance Hall:** Laminate flooring
- **Kitchen:** approx 12'6" x 9'6". Good range of floor and wall cupboards. Built-in oven and gas hob with cooker hood over (untested). Plumbing for washing machine. Space or tall fridge/freezer. Cupboard housing gas fired combination boiler (untested).
- **Lounge:** approx 19'5" x 11'6". Air conditioning unit (untested). 3 Bay windows & inset spot lights.
- **Dining Area:** approx 9'5" x 7'9". Laminate floor. Patio doors.
- **Inner Hall:** Airing cupboard.
- **Bedroom 1:** approx 10'9" x 9'6". Fitted Wardrobes.
- **En-Suite Shower Room**
- **Bedroom 2:** approx 9'5" x 8'8". Fitted Wardrobes.
- **Bathroom:** Panelled bath, wash basin & WC
- **Gas Central Heating** (system untested)
- **PVCu Double-Glazing**
- **Parking for 1 Car**
- **Small Private Garden with Metal Shed.**
- **Age Restriction 45+ Pets Considered**
- **Well maintained Residential Park near to local amenities**

**Price £170,000**

## 'Stately Chatsworth' 2001



**Pitch Fee: approx. £271.65**  
**Subject to Annual Review**  
**Council Tax Band: 'A'**

**Tenure: 1983 Mobile Homes Act Agreement**

**VIEWING STRICTLY BY APPOINTMENT WITH THE VENDOR'S AGENT Dorset Park Homes 01202 877511**

**IMPORTANT NOTE:** These particulars are believed to be correct but their accuracy is not guaranteed. They do not form part of any contract. Nothing in these particulars shall be deemed to be a statement that the property is in good structural condition or otherwise, nor that any of the services, appliances, equipment or facilities are in good working order or have been tested. Purchasers should satisfy themselves on such matters prior to purchase. Ref.W05171

*The recommended specialist in Park Home sales*  
Proprietor: Simon Dixon

