



WEST STREET, AXBRIDGE

ASKING PRICE OF £130,000

COOKE & CO
your local property expert

PROPERTY FEATURES

- GRADE II LISTED BUILDING
- GARDEN SPACE
- SOUGHT-AFTER LOCATION
- GROUND FLOOR FLAT
- ALLOCATED PARKING
- LEASEHOLD PROPERTY

WEST STREET, AXBRIDGE, BS26 2AD



Offered with allocated parking and access to well maintained communal facilities, this well positioned one bedroom apartment enjoys a central location in the heart of Axbridge, making it an excellent opportunity for first time buyers, downsizers, or investors alike.

Bright and well presented throughout, the property briefly comprises a spacious lounge with front aspect window, fitted kitchen with a range of base units, electric oven, and space for appliances, modern shower room with corner shower cubicle, pedestal wash hand basin, and WC, together with a well proportioned double bedroom featuring patio doors opening directly onto the communal rear courtyard.

Externally, residents benefit from a pleasant courtyard with motion sensor security lighting, communal gardens, drying area, and bin store. The property also enjoys one allocated parking space within the shared residents' car park, along with additional visitor parking.

LOCATION

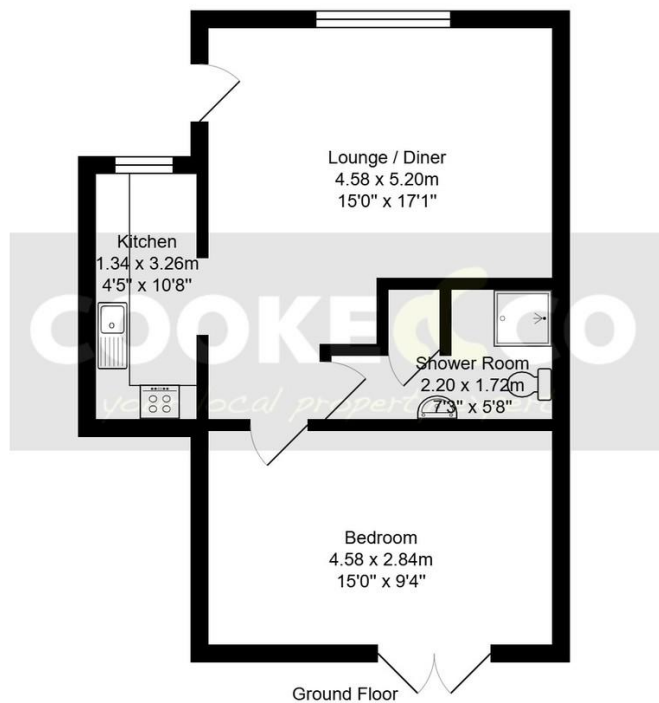
Steeped in history and full of character, Axbridge is one of Somerset's most picturesque market towns, offering a wonderful balance of rural charm and everyday convenience. The town centre is home to an array of independent shops, cafés, traditional pubs, and essential amenities, all set amongst beautiful period architecture and the iconic medieval square.

Surrounded by stunning countryside and lying on the edge of the Mendip Hills, Axbridge is a fantastic location for walkers, cyclists, and those who enjoy the outdoors, while nearby Cheddar Gorge provides one of the region's most celebrated natural attractions. Despite its peaceful setting, the town enjoys excellent transport links, with easy access to the M5, Bristol Airport, Weston-super-Mare, and the city of Wells, making it an ideal base for commuters and those looking to enjoy the best of Somerset living.

WEST STREET, AXBRIDGE, BS26 2AD



Council Tax:
Band A
Local Authority:
Sedgemoor District Council



Ground Floor
 Total Area: 42.4 m² ... 457 ft²
 All measurements are approximate and for display purposes only.



Score	Energy rating	Current	Potential
92+	A		
81-91	B		
69-80	C		77 C
55-68	D		
39-54	E	47 E	
21-38	F		
1-20	G		

ben.clarke@cookeproperty.co.uk

OFFICE CONTACT INFO

236 High Street
 Worle
 Weston-Super-Mare
 Avon
 BS22 6JE

01934 522244
 enquiries@cookeproperty.co.uk
 www.cookeproperty.co.uk

Agents Note: Whilst every care has been taken to prepare these particulars, they are for guidance purposes only. All measurements are approximate, and are for general guidance purposes only and whilst every care has been taken to ensure their accuracy, they should not be relied upon and potential buyers/tenants are advised to recheck the measurements

