



£97,000

FLAT 4, HELLERSLEA COURT , LUGLEY STREET,
NEWPORT, ISLE OF WIGHT , PO30 5HD

Hose
Rhodes
Dickson



£97,000

FLAT 4,
HELLERSLEA COURT,
LUGLEY STREET,
NEWPORT,
ISLE OF WIGHT,
PO30 5HD

A well-presented, apartment situated in a convenient location in Newport town centre. This would make an ideal first investment for a buy-to-let landlord or for a first time buyer. Comprising bedroom with balcony, bathroom, kitchen, lounge/diner with balcony.

The centre of Newport, the county town of the Isle of Wight, offers a variety of main stream shops and amenities. There is also the main bus station providing connections Island-wide. The property is also conveniently placed for all levels of schooling and is just a short drive from the mainland ferry connections at either Cowes, East Cowes or Fishbourne.





Communal entrance hallway - Staircase to all floors -

HALL -

BEDROOM 11' 5" x 10' 3" (3.48m x 3.12m) A double bedroom. Double glazed window and door opening onto balcony. Electric heater.

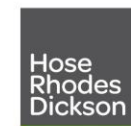
KITCHEN 8' 11" x 6' 2" (2.72m x 1.88m) Integrated electric oven with four hobs. Extractor fan. Space for washing machine and fridge/freezer. Tiled kitchen.

LOUNGE/DINER 14' 0" max x 11' 0" (4.27m x 3.35m) Large lounge/diner. Built in airing cupboard with immersion tank. Double glazed window and door opening onto balcony. Aerial socket. Electric heater.

BATHROOM 5' 4" x 5' 9" (1.63m x 1.75m) Bath with electric shower overhead. WC and wash basin. Towel rail. Velux window.

HEATING Electric heaters located around the apartment. Immersion tank.

Council Tax Band: A



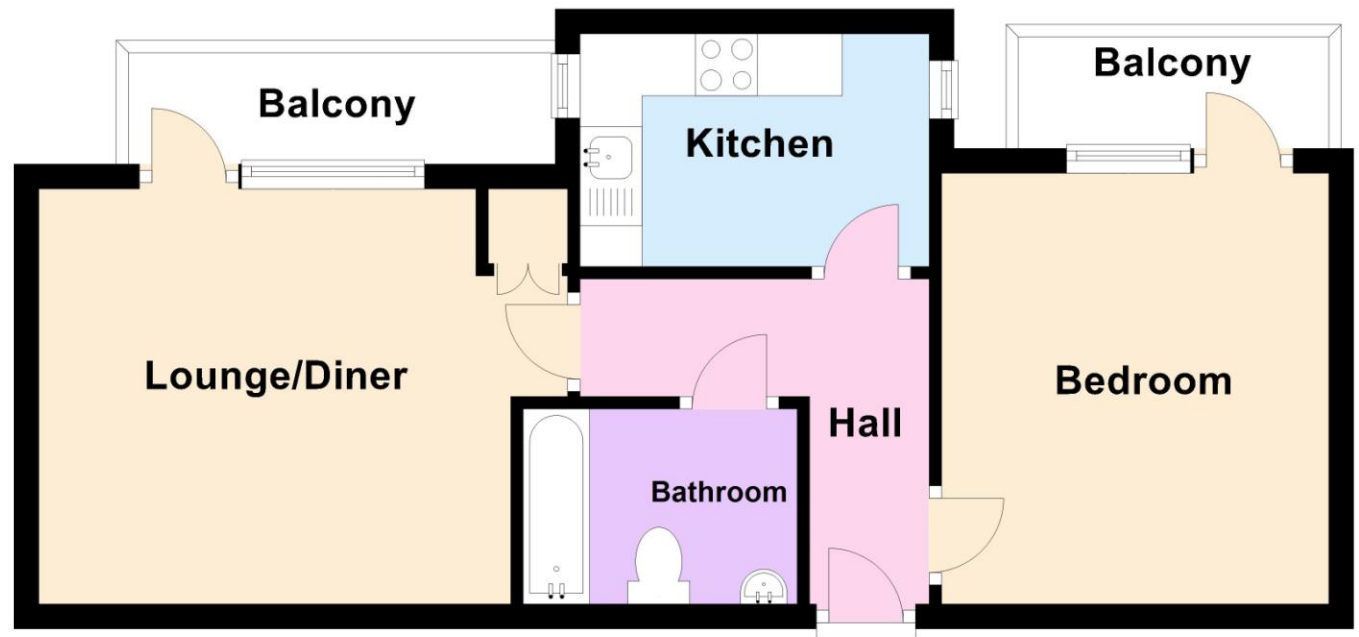
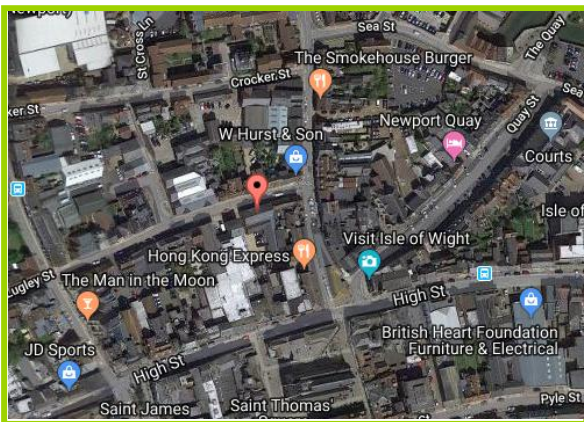
For more information on mortgages and home insurance, call our Hose Rhodes Dickson in-house mortgage advisor, Jon Shears.

Call Jon on 01983 521144

Energy Efficiency Rating		
	Current	Potential
Very energy efficient - lower running costs		
(92-100) A		
(81-91) B		
(69-80) C		72
(55-68) D		
(39-54) E	52	
(21-38) F		
(1-20) G		
Not energy efficient - higher running costs		
England, Scotland & Wales		EU Directive 2002/91/EC

Where to find the property

Flat 4, Hellerslea Court , Lugley Street, Newport, Isle of Wight , PO30 5HD



This plan is for illustrative purposes. Measurements of doors, windows, rooms and any other items are approximate. Floor areas are approximate.
Plan produced using PlanUp.

Our description of any appliances and/or services (including any central heating system) should not be taken as any guarantee that these are in working order. None of the statements contained in these particulars as to this property are to be relied upon as statements or representation of fact nor is it intended to form any part of any contract.

Especially if travelling long distances, if there is any point of particular importance, please contact the office who will be pleased to clarify the information.

Floor plans are a schematic and are for guidance only. All measurements are approximate. Please note that if our photographs depict the property in a furnished condition, on completion all furnishings will be removed unless specifically mentioned elsewhere as being included in the sale.

Call our Newport office to arrange a viewing
01983 521144 or email newport@hrdiw.co.uk

Newport 521144 | Ventnor 855525 | Bembridge 875000 | Ryde 565658 | Cowes 294714 | Shanklin 866000

www.hrdiw.co.uk
Friendly service and local knowledge

