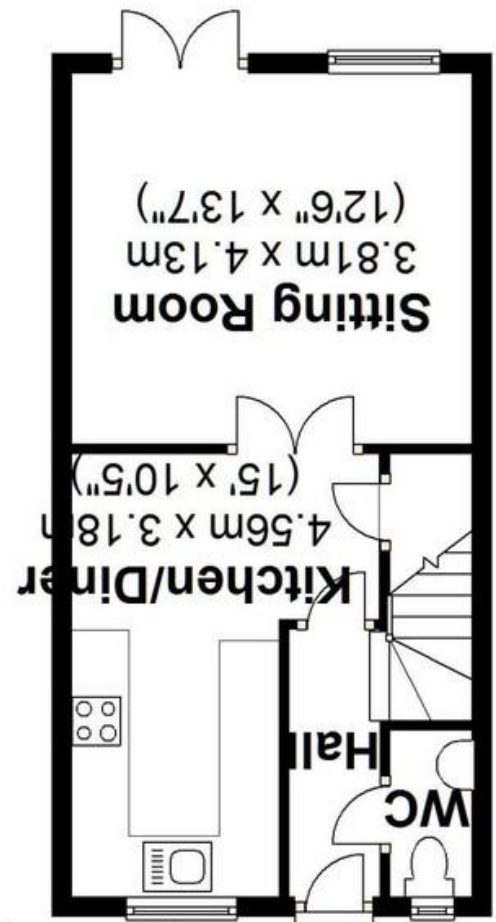
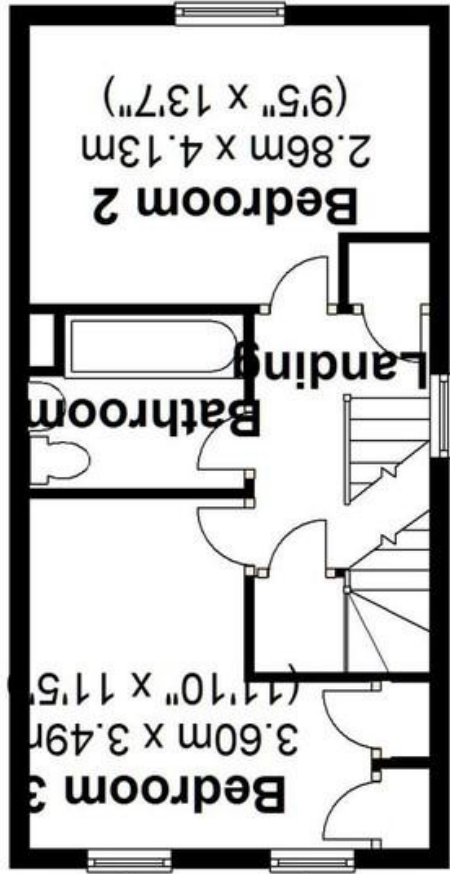


Agents Note: Whilst every care has been taken to prepare these sales particulars, they are for guidance purposes only. All measurements are approximate and whilst every care has been taken to ensure their accuracy, they should not be relied upon and potential buyers are advised to recheck the measurements

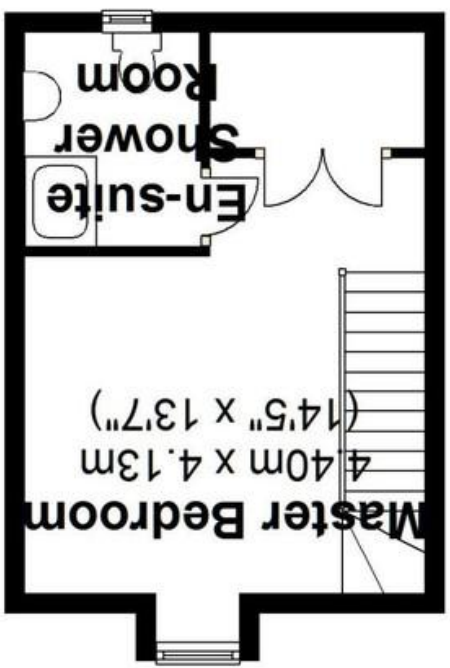
Total area: approx. 91.3 sq. metres (982.4 sq. feet)



Ground Floor



First Floor



Second Floor

Approx. 33.7 sq. metres (362.2 sq. feet) for Ground Floor, 33.8 sq. metres (363.4 sq. feet) for First Floor, and 23.9 sq. metres (256.7 sq. feet) for Second Floor.



66 Stone Close, Corsham, Wiltshire, SN13 0QU

David Ingram RESIDENTIAL logo

66 Stone Close, Corsham, Wiltshire, SN13 0QU

- Semi detached townhouse
- Bathroom and en suite
- UPVC double glazing & gas central heating
- Well enclosed garden
- Three good sized bedrooms
- L-shaped kitchen/diner
- Open outlook to the front
- Garage and off street parking

£265,000

Situation and Description

A modern three storey semi detached house forming part of a small development on the outskirts of Corsham. The property benefits from uPVC double glazing, gas central heating and neutral décor.

The property offers accommodation comprising entrance hall with cloakroom off, sitting room opening onto the rear garden, L-shaped kitchen/diner, two double bedrooms and a bathroom on the first floor and a spacious master bedroom with en suite shower room on the second floor.

Outside

Front

Small, level garden with paved path to front door.

Rear

Well enclosed, predominately lawned garden with paved patio seating area. Gated access to side.

Garage

Single unit with up and over door to front, door to side, power and lighting. Two off street parking spaces to the side of the property.

Stone Close is a small development on the outskirts of Corsham built by Newland Homes in 2006. Corsham's picturesque and historic high street which is within easy access offers a variety of interesting shops, cafes and restaurants. Other local amenities include junior and comprehensive schooling, doctor's surgery and leisure centre. Ideally placed for access to the A4, the Georgian city of Bath is within 9 miles with its vast array of shopping, cultural and leisure amenities and high speed rail service to London, which is also available at nearby Chippenham. There is also fast road access to the M4 motorway via junction 17.

EPC Rating - C



Directions

Leave our Corsham office turn right onto the Pickwick Road and proceed towards Box. At the mini roundabout just after the Hare and Hounds bear left and proceed straight over the next two mini roundabouts. After approximately half a mile, turn left onto the Bradford Road signposted Bradford on Avon, turn right into Stone Close where the property can be found in the back right corner.