








Seymours



# Hartley Close Camberley, GU17 0DE £360,000

Arrange a viewing: 01276 534100

## Property Details

-  3 bedrooms
-  1 bath
-  EPC Rating TBC
-  953 sqft (excluding garage)
-  Blackwater Station (1.4 miles)

- Three bedrooms
- Two reception rooms
- Kitchen
- Bathroom
- Enclosed garden
- Garage in block
- Convenient for shops at Darby green and Blackwater
- Good local schools

Council tax band C currently £1854.88 per

A three-bedroom home which has been extended over the years and offers a large living room as well as another reception room. The property has an enclosed rear garden and also benefits from a garage in a block. It is conveniently located to local shops at Darby Green as well as good local schools and a wider range of shops, amenities, and railway station at Blackwater.

[01276 534100](tel:01276534100) / [james@seymours-blackwater.co.uk](mailto:james@seymours-blackwater.co.uk)



### Hartley Close

Approximate Gross Internal Area = 88.5 sq m / 953 sq ft  
(Excluding Garage)

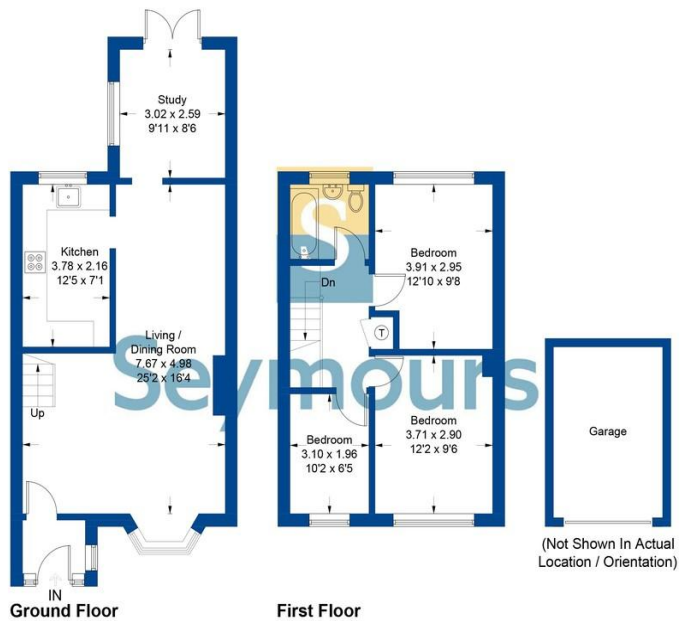


Illustration for identification purposes only, measurements are approximate, not to scale. FloorplansUsketch.com © 2023 (ID991092)