



HINTON & DOWNES
residential

SALES, LETTINGS & MANAGEMENT

Long Elmes

Harrow Weald HA3 5LA

- Three bedroom semi detached house
- Garage with own driveway
- In need of updating throughout
- Gas central heating and some double glazed windows

£405,000

EPC Rating '47'



Property Description

THE ACCOMODATION IS ARRANGED AS FOLLOWS:-

LOUNGE 15' 4" x 12' 11" (4.68m x 3.95m) Double glazed window to front aspect. Radiator. Wall mounted gas fire with back- boiler.

DINING ROOM 10' 7" x 9' 4" (3.24m x 2.85m) French doors to rear aspect and garden. Radiator.

KITCHEN 9' 8" x 5' 6" (2.97m x 1.7m) In need of updating. Under-stairs cupboard. Butler type sink unit. Window and door to rear aspect and garden.

FIRST FLOOR LANDING Access to loft space. Double glazed window to side aspect.

BEDROOM I 12' 2" x 7' 10" (3.73m x 2.4m) Double glazed window to front aspect. Radiator.

BEDROOM II 11' 1" x 9' 1" (3.4m x 2.78m) Double glazed window to rear aspect. Radiator. Cupboard housing water

cylinder.

BEDROOM III 7' 7" x 7' 2" (2.32m x 2.2m) Double glazed window to front aspect. Radiator.

BATHROOM In need of refurbishment. Old cast iron bath. Wall mounted wash hand basin and WC. Double glazed window to rear aspect.

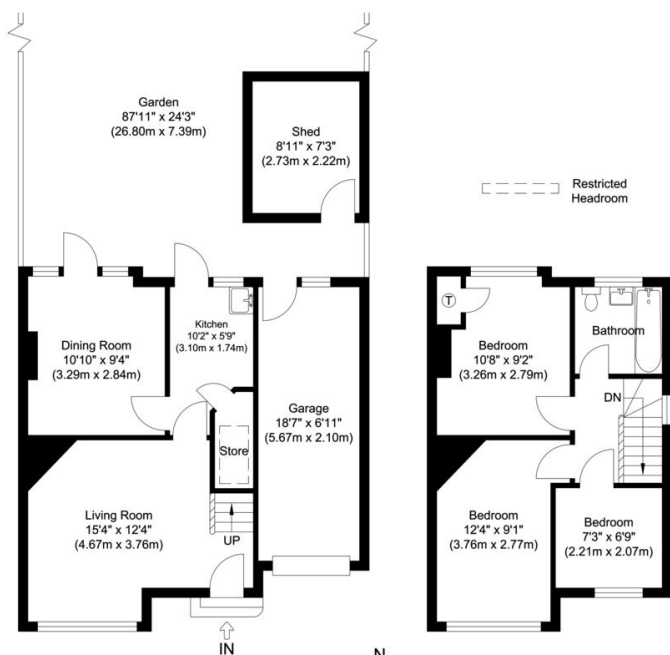
GENERAL INFORMATION Front Garden

Path to front door.

Rear Garden

Approximately 90ft in length.

GARAGE The property benefits from own driveway to garage at the side of the house. The garage alongside the size of the rear garden provide ample scope to extend the house (stpp).



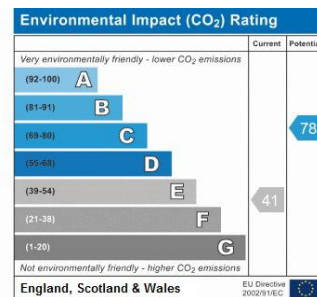
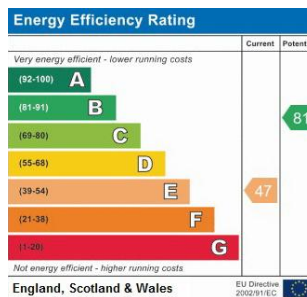
Ground Floor
Approximate Floor Area
535.61 sq. ft.
(49.76 sq. m)

First Floor
Approximate Floor Area
336.15 sq. ft.
(31.23 sq. m)

Total Gross Internal Area
871.76 sq. ft.
(80.99 sq. m)

Long Elmes, Harrow, HA3

Illustration for identification purposes only, measurements are approximate, not to scale.



399 High Road
Harrow
Middlesex
HA3 6EL

www.hintonanddownes.co.uk
sales@hintonanddownes.com
0208 861 1066

Agents Note: Whilst every care has been taken to prepare these sales particulars, they are for guidance purposes only. All measurements are approximate are for general guidance purposes only and whilst every care has been taken to ensure their accuracy, they should not be relied upon and potential buyers are advised to recheck the measurements