



Cambria Road | London | SE5

Freehold

£1,250,000

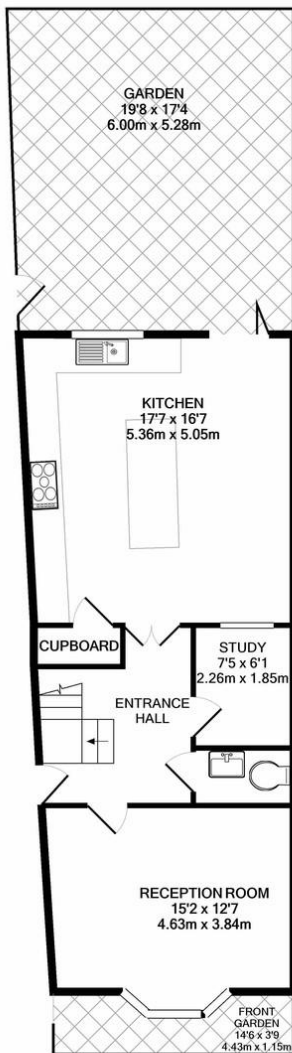
- End Terrace House
- Four double bedrooms
- Wide bay-fronted Reception Room
- Two bathrooms and a WC
- Large kitchen diner
- Victorian house
- Courtyard Garden
- Denmark Hill Station
- Ruskin Park
- Loughborough Junction Station



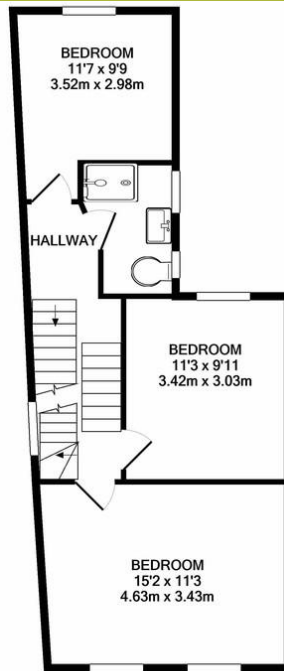
End of terrace Victorian house on an attractive road next to Ruskin Park. Recently extended and refurbished to create a beautiful large kitchen/diner filled with natural light and an additional bathroom and bedroom in the loft. There are four double bedrooms, two bathrooms and a WC, a spacious bay-fronted reception room, a downstairs study, and a stunning skylight lit kitchen which leads to the landscaped garden. Fun, sociable and sought-after place to live, with the bars, restaurants and bistros of Camberwell a short walk away and Brixton Village equally close. Herne Hill is also nearby with its renowned Sunday Market, as well as Brockwell Park and Lido. Excellent transport links to King's Cross from Loughborough Junction station, to Victoria and London Bridge from Denmark Hill station, and Victoria line services at



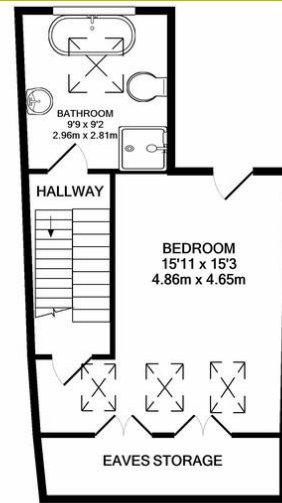
Score	Energy rating	Current	Potential
92+	A		
81-91	B		81 B
69-80	C	70 C	
55-68	D		
39-54	E		
21-38	F		
1-20	G		



GROUND FLOOR



1ST FLOOR



2ND FLOOR

Whilst every attempt has been made to ensure the accuracy of the floor plan contained here, measurements of doors, windows, rooms and any other items are approximate and no responsibility is taken for any error, omission, or mis-statement. This plan is for illustrative purposes only and should be used as such by any prospective purchaser. The services, systems and appliances shown have not been tested and no guarantee as to their operability or efficiency can be given.
Made with Metropix ©2022

Viewing Arrangements

Strictly by appointment

Contact Details

121 Denmark Hill

London

SE5 8EN

www.urbanvillagehomes.co.uk

sales@urbanvillagehomes.com

020 3519 9121

Agents Note: Whilst every care has been taken to prepare these sales particulars, they are for guidance purposes only. All measurements are approximate and for general guidance purposes only and whilst every care has been taken to ensure their accuracy, they should not be relied upon and potential buyers are advised to recheck the measurements