



## Durlow, New Dixton

£385,000

- Substantial character semi-detached property
- Retaining some charming features
- Adjoining playing fields, distant Kymin views
- Conservatory to rear aspect
- Driveway parking and attractive garden
- EPC Rating: D



 3  1  2

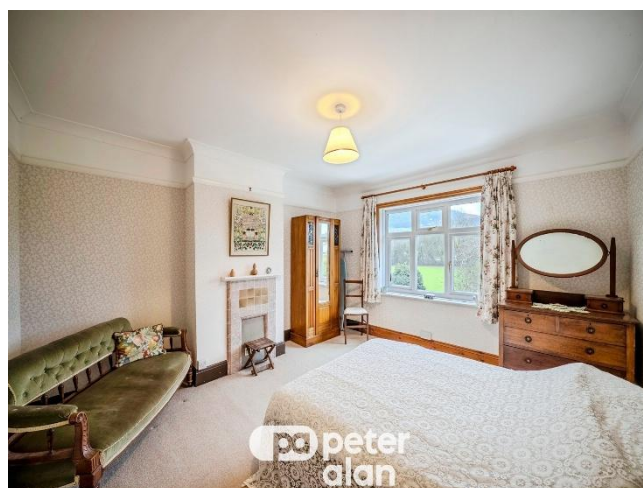


## About the property

Traditional style semi-detached property with original features. Conservatory to rear overlooking the pretty garden and enjoying views towards the Kymin. Good access to road links, Available with no onward chain.

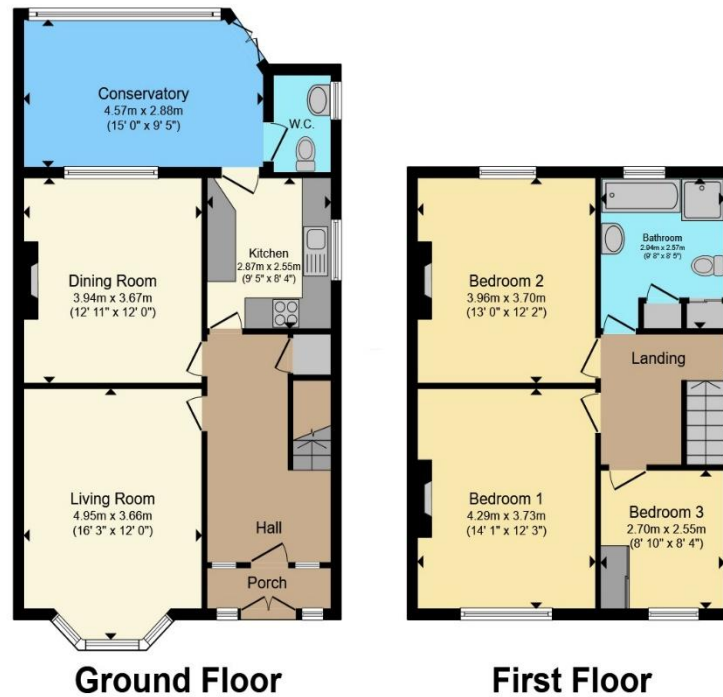
Situated in a convenient location for country walks, the Town and road travel. Attractive traditional design property, offering well proportioned accommodation with original charm and character interior. Approached via gated driveway which opens into the front turning area, offering tandem parking alongside the house. The front garden is abundantly stocked with mature plants and shrubs with access leading around the side to the rear garden. A delightful well established area, enthusiastically appreciated over the years. With lawn and planted borders including rockery area, adjoining the school sports grounds and distant Kymin views.

Delightful features include a mix of; original styled internal doors, high smooth ceilings with picture rails, coving, superb bay window, ornamental fireplace and quality crafted staircase. The accommodation comprises; Front Porch leading to front door having ornate decorated leaded light side panels, through to impressive Reception Hall, with doors to following; Sitting Room with bay window to front aspect. Dining Room with mounted gas fire, opening through to Conservatory, with natural wooden flooring, double doors opening out to the rear garden. Cloakroom with WC and Utility. Kitchen fitted with a more traditional range of units. On the first floor there are three sizeable Bedrooms, all enjoying good views. The Bathroom also has a separate Shower cubicle and offers potential to re-configure if required.





## Floorplan



Total floor area 126.8 m<sup>2</sup> (1,365 sq.ft.) approx

This floor plan is for illustrative purposes only. It is not drawn to scale. Any measurements, floor areas (including any total floor area), openings and orientation are approximate. No details are guaranteed, they cannot be relied upon for any purpose and they do not form part of any agreement. No liability is taken for any error, omission or misstatement. A party must rely upon its own inspection(s). Powered by [www.propertybox.io](http://www.propertybox.io)



## Important Information

Note while we endeavour to make our sales details accurate and reliable, if there is any point which is of particular interest to you, please contact the office and we will be pleased to confirm the position for you. We have not personally tested any apparatus, equipment, fixtures, fittings or services and cannot verify they are in working order or fit for their purposes. Nothing in these particulars is intended to indicate that carpets or curtains, furnishings or fittings, electrical goods (whether wired or not). Gas fires or light fittings or any other fixtures not expressly included form part of the property offered for sale. This computer generated Floorplan, if applicable, is intended as a general guide to the layout and design of the property. It is not to scale and should not be relied upon for dimensions. Tenure: We cannot confirm the tenure of the property as we have not had access to the legal documents. The buyer is advised to obtain verification from their solicitor or surveyor.

Peter Alan Limited is registered in England and Wales under company number 2073153, Registered Office is Cumbria House, 16-20 Hockliffe Street, Leighton Buzzard, Bedfordshire, LU7 1GN. VAT Registration Number is 500 2481 05. For activities relating to regulated mortgages and non-investment insurance contracts, Peter Alan Limited is an appointed representative of Connells Limited which is authorised and regulated by the Financial Conduct Authority. Connells Limited's Financial Services Register number is 302221. Most buy-to-let

