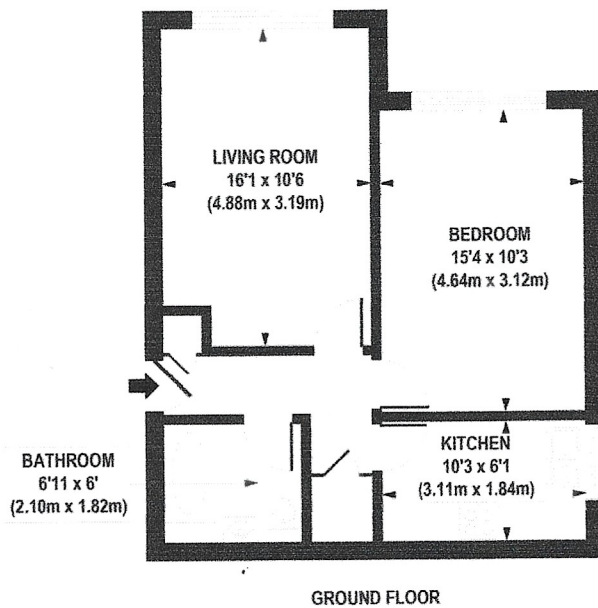


Sunningfields Road, NW4



**APPROX. GROSS INTERNAL FLOOR AREA 505 sq. ft / 46.88 sq. m**

Floorplan is for illustrative purposes only and is not to scale.  
Every attempt has been made to ensure the accuracy of the floorplan shown, however all measurements, fixtures, fittings and data shown are an approximate interpretation for illustrative purposes only.  
Liability for errors, omissions or mis-statement through negligence or otherwise is hereby excluded.



**34 Golders Green Road, London NW11 8LL**

**Tel: 020 8455 0055**

**[www.dreamviewestates.co.uk](http://www.dreamviewestates.co.uk)**

Dreamview Estates Limited. Registered Office: as above  
Registered in England No. 7859146

