

Broxash Road | SW11 | Leasehold



A superb two bedroom garden flat arranged over the ground floor of an attractive Victorian house. The accommodation is spacious and light with good proportions in all of the principal rooms. The property offers the prospective purchaser a fantastic opportunity to extend to the rear and into the side return (subject to usual consents).

Two double bedrooms are situated to the front of the property, the larger one has a bay window and a feature fire place. The reception room is at the rear of the property and benefits from a feature fire place, wooden flooring and a door opens onto the south facing garden. The kitchen is open plan and is fitted with white wall and base units and wooden work surfaces. There is also a family bathroom.

Broxash Road is a popular residential street that runs East-West off Clapham Common West Side. Clapham South tube is approximately a five-minute walk, with Clapham High Street also a short walk across the Common, and the amenities of Northcote Road are a similar distance in the opposite direction. There are a number of good state and private schools nearby (subject to catchment and entrance each year).

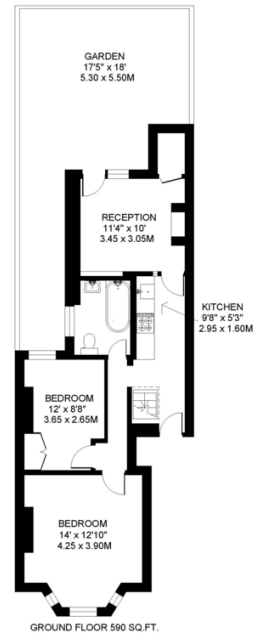
- Two double bedrooms
- Reception room
- Family bathroom
- South facing garden



BROXASH ROAD
BATTERSEA
LONDON SW11



APPROXIMATE INTERNAL FLOOR (LIVING) AREA
590 SQ.FT / 54.8 SQ.M.



DISCLAIMER
This plan is a preliminary sketch and is not intended to be used as a contract. It is provided for information only and is subject to change without notice. The actual floor plan may differ from the plan shown. All dimensions are approximate and should be used as a guide only. Please contact the agent for more information.



131 Northcote Road, London, SW11 6PS,
T 020 7228 5111
E batterseasales@ramptonbaseley.com
www.ramptonbaseley.com

All statements contained in these particulars as to this property are made without responsibility on the part of Rampton Baseley Estate Agents

