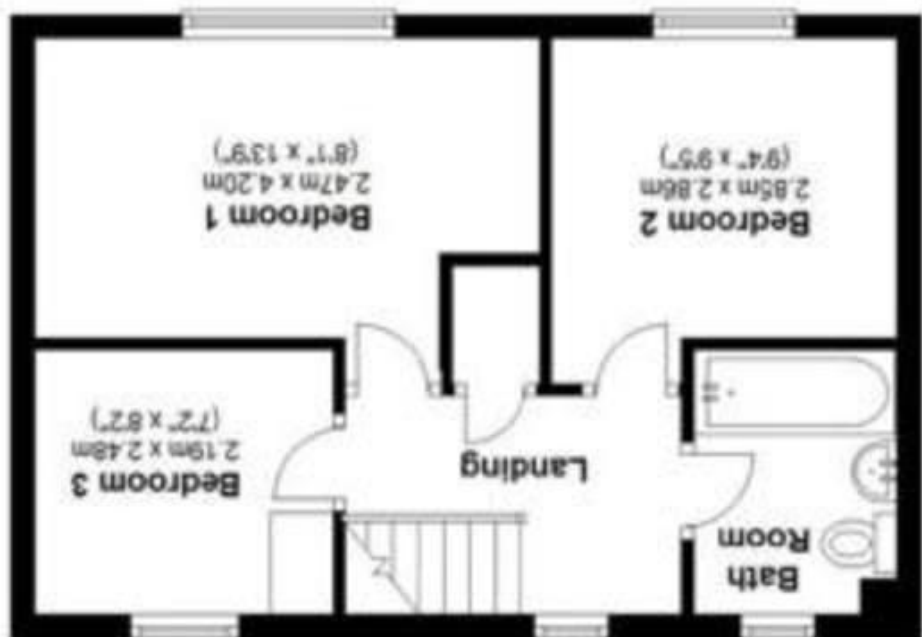
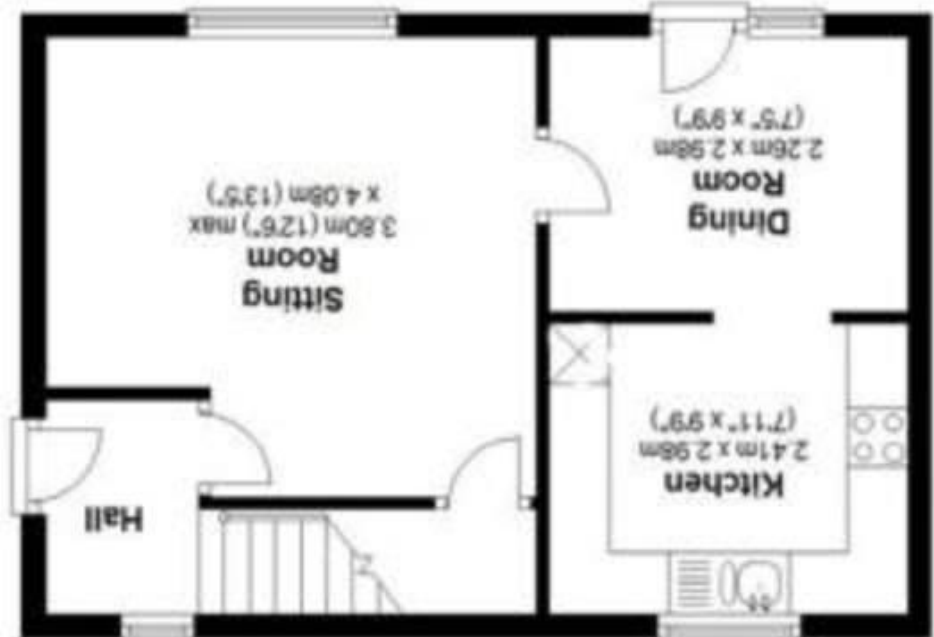


Agents Note: Whilst every care has been taken to prepare these sales particulars, they are for guidance purposes only. All measurements are approximate and for general guidance purposes only and whilst every care has been taken to ensure their accuracy, they should not be relied upon and potential buyers are advised to check the measurements

Total area: approx. 68.2 sq. metres (733.7 sq. feet)



First Floor
Approx. 34.1 sq. metres (366.5 sq. feet)



Ground Floor
Approx. 34.1 sq. metres (366.9 sq. feet)



38 Light Close, Corsham, Wiltshire, SN13 0DF

DAVID INGRAM
RESIDENTIAL SALES

38 Light Close, Corsham, Wiltshire, SN13 0DF

- Three bedrooms, two reception rooms
- Neutral décor throughout
- Off street parking
- NO ONWARD CHAIN
- Recently refitted kitchen and bathroom
- Sought after location
- Level, lawned gardens

£215,000

Situation and Description

A well presented end of terrace house which benefits from a sought after location within easy walking distance of amenities and NO ONWARD CHAIN.

The property offers accommodation comprising entrance hall, sitting room, dining room opening onto the rear garden, superb kitchen with recently fitted units, three bedrooms and a bathroom with modern white suite.

Front

Predominately lawned garden with path to front door. There is a path to the side of the property which leads to the rear garden.

Rear

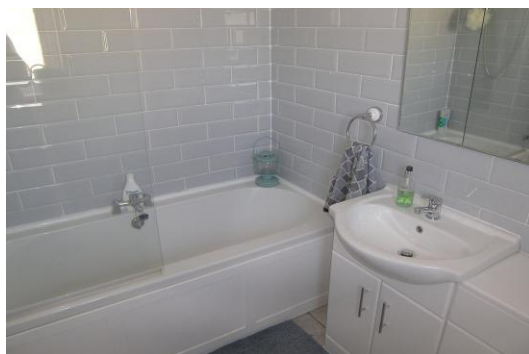
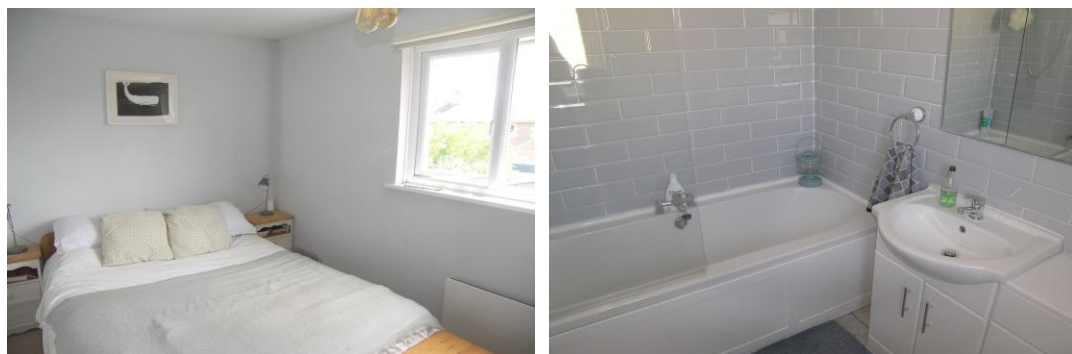
Pretty garden with level lawned area, flower and shrub beds, block paved seating area and vegetable patches. The garden is well enclosed by fencing and stone walling and enjoys a sunny aspect.

Parking

Off street parking for two cars at the front of the property.

The property is tucked away in a sought cul de sac within level walking distance of Corsham's picturesque high street and all the local amenities, bus routes and easy transport links to the M4 and mainline station at Chippenham.

EPC Rating - D



Directions

From our office on the High Street turn right onto Pickwick Road and at the mini roundabout turn right onto Newlands Road. Proceed over the two mini roundabouts, turn left onto The Lagger and left again into Light Close. Take the first right into the cul de sac and the property will be found on the left hand side.