



BRITISH
PROPERTY
AWARDS

2020 - 2021

★★★★★

GOLD WINNER

LETTING AGENT
IN LEIGH-ON-SEA



BRITISH
PROPERTY
AWARDS

2018-2019

★★★★★

GOLD WINNER

LETTING AGENT
IN LEIGH ON SEA



BRITISH
PROPERTY
AWARDS

2017

★★★★★

GOLD WINNER

ESTATE AGENT
IN LEIGH-ON-SEA



Buckleberry Heath, South Woodham Ferrers

SOUGHT AFTER LOCATION: Castle Estate Agents are delighted to offer FOR SALE this well presented 2 DOUBLE BEDROOM TOP FLOOR APARTMENT set within an easy walk to LOCAL SHOPS, BARS, RESTAURANTS and STATION benefiting from a spacious LOUNGE/DINER, fully fitted KITCHEN, double glazing and PARKING SPACE.

- Two double bedrooms
- Long lease
- Walk to station
- Walk to town center
- Walk to bus routes
- Top floor maisonette
- Large lounge/diner
- Parking space
- Double glazed
- Communal gardens

£219,995 Leasehold

Front aspect

Well stocked communal front garden and laid to lawn leading to communal double glazed front door to communal hall and stairs to all floors leading to top floor landing and own double glazed front door to:

Inner hallway

Double glazed window to rear aspect, doors to all rooms, wall mounted electric heater, power points, telephone point, laminated wood flooring, access to large loft space with boarding, power, lighting and pull down ladder.

Lounge/Diner 19' 5" by 11' 6" (5m 92cm by 3m 51cm), ()

Dual aspect Double glazed windows to the front and rear aspect with fitted blinds, coving, power points, tv point, wall mounted electric radiator, spot lights.

Kitchen 18' by 6' (5m 49cm by 1m 83cm), ()

2 x Double glazed windows to the rear aspect, eye level and base level units, tiled splash backs, roll top work surfaces, breakfast bar, stainless steel sink and single drainer with mixer taps, power points, 4 ring ceramic hob with under oven and over extractor fan, space for fridge freezer, washing mashing, integral dish washer, tiled flooring and wine rack.

Bedroom 1 16' by 8' 5" (4m 88cm by 2m 57cm), ()

2 x Double glazed windows to the front aspect, wall mounted electric radiator, power points, tv point.


Bedroom 2 8' 7" by 8' 4" (2m 62cm by 2m 54cm), ()


Double glazed window to the front aspect, wall mounted electric radiator, power points.

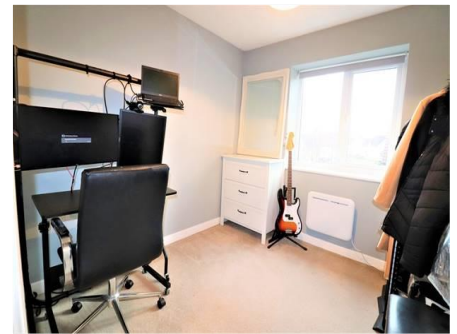
Bathroom

3 piece White suite comprising of a low level flush toilet, hand wash basin with mixer taps, panel enclosed bath with wall mounted electric shower over, fully tiled, down lighters, heated towel rail, extractor fan, laminated wood flooring.



Energy Efficiency Rating		
	Current	Potential
Very energy efficient - lower running costs		
(92-100) A		
(81-91) B		
(69-80) C		81
(55-68) D		
(39-54) E	52	
(21-38) F		
(1-20) G		
Not energy efficient - higher running costs		
England & Wales	EU Directive 2002/91/EC	

Environmental (CO ₂) Impact Rating		
	Current	Potential
Very environmentally friendly - lower CO ₂ emissions		
(92-100) A		
(81-91) B		81
(69-80) C		
(55-68) D	60	
(39-54) E		
(21-38) F		
(1-20) G		
Not environmentally friendly - higher CO ₂ emissions		
England & Wales	EU Directive 2002/91/EC	



Whilst we endeavour to make our sales particulars as accurate and reliable as possible, if there is any point which is of particular importance to you, please contact the office and we will be pleased to check the information. The mention of any appliances and/or services in these details does not imply that these are in full and efficient working order or have been inspected by ourselves. Please be advised that some of the particulars may be awaiting vendor approval. Please contact us should you have any queries and we will try our utmost to assist.



Whilst we endeavour to make our sales particulars as accurate and reliable as possible, if there is any point which is of particular importance to you, please contact the office and we will be pleased to check the information. The mention of any appliances and/or services in these details does not imply that these are in full and efficient working order or have been inspected by ourselves. Please be advised that some of the particulars may be awaiting vendor approval. Please contact us should you have any queries and we will try our utmost to assist.