



HINTON & DOWNES
residential

SALES, LETTINGS & MANAGEMENT

Byron Road

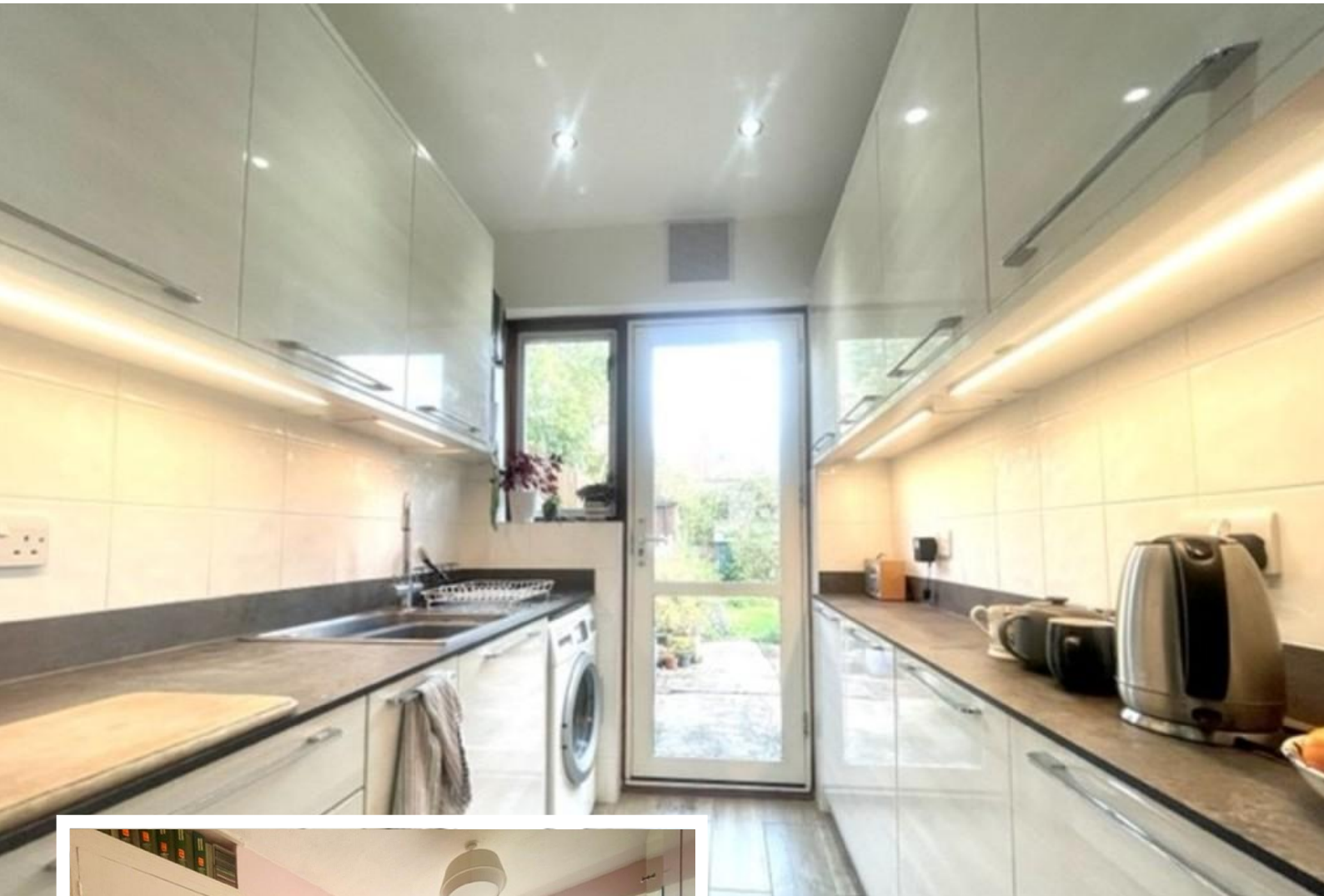
Harrow Weald HA3 7TE

- Three bedroom terraced house with parking
- Offered for sale in very good order throughout
- Gas central heating and double glazed windows

£525,000

EPC Rating '66'





Property Description

A VERY WELL PRESENTED THREE BEDROOM TERRACED HOUSE WITH OFF STREET PARKING well positioned for shopping and transport facilities in the surrounding area including that of Harrow & Wealdstone BR/Bakerloo line station. The property is offered for sale in good order throughout and benefits from gas fired central heating, double glazed windows, a good sized through lounge, modern kitchen, modern bathroom and the aforementioned off street parking to the front. An internal inspection comes highly advised.

ENTRANCE HALL

THROUGH LOUNGE/DINER

FITTED KITCHEN

FIRST FLOOR LANDING

BEDROOM I

BEDROOM II



BEDROOM III

FAMILY BATHROOM

GENERAL INFORMATION

OFF STREET PARKING

REAR GARDEN



BYRON ROAD
HARROW WEALD HA3



GROUND FLOOR

FIRST FLOOR

APPROX. GROSS INTERNAL FLOOR AREA 925.69 SQ. FT / 86.00 SQ. M

WHILST EVERY ATTEMPT HAS BEEN MADE TO ENSURE THE ACCURACY OF THE FLOOR PLAN CONTAINED HERE, MEASUREMENTS OF DOORS, WINDOWS, ROOMS AND ANY OTHER ITEMS ARE APPROXIMATE AND NO RESPONSIBILITY IS TAKEN FOR ANY ERROR, OMISSION, OR MIS-STATEMENT. THIS PLAN IS FOR ILLUSTRATIVE PURPOSES ONLY AND SHOULD BE USED AS SUCH, BY ANY PROSPECTIVE PURCHASER. FLOOR PLANS ARE NOT DONE TO "SCALE".

Energy Efficiency Rating

	Current	Potential
Very energy efficient - lower running costs		
(92-100) A		
(81-91) B		87
(69-80) C		
(55-68) D	66	
(39-54) E		
(21-38) F		
(1-20) G		
Not energy efficient - higher running costs		
England, Scotland & Wales		EU Directive 2002/91/EC

399 High Road
Harrow
Middlesex
HA3 6EL

www.hintonanddownes.co.uk
sales@hintonanddownes.com
0208 861 1066

Agents Note: Whilst every care has been taken to prepare these sales particulars, they are for guidance purposes only. All measurements are approximate for general guidance purposes only and whilst every care has been taken to ensure their accuracy, they should not be relied upon and potential buyers are advised to recheck the measurements