



Mid Terrace Home

CHECK OUT this Terraced home with three bedrooms, spacious kitchen, open plan sitting/dining room, conservatory, bathroom, separate WC, front and rear garden in the sought-after seaside town of Exmouth.

28 Normandy Close | Exmouth | EX8 4PB





PROPERTY TYPE

Mid Terraced House



SIZE

898 sq ft



LOCATION

Town



AGE

1950s, 1960s and 1970s



BEDROOMS

3



RECEPTION ROOMS

1



BATHROOMS

1



WARMTH

Gas Central Heating



PARKING

On Road Parking



OUTSIDE SPACE

Garden



EPC RATING

68D



COUNCIL TAX BAND

B



in a nutshell...

- 3 Bedrooms
- Spacious Kitchen
- Front and Rear Garden
- Lounge with Conservatory
- Bathroom and Separate WC
- Utility
- Seaside Town with great Beaches
- Cul de Sac Location
- On Road Parking





the details...

CHECK OUT this Terraced home with three bedrooms, spacious kitchen, open plan sitting/dining room, conservatory, bathroom, separate WC, front and rear garden in the sought-after seaside town of Exmouth.

A pathway leads through the enclosed front garden, which is laid to lawn, to the front door, sheltered beneath a storm porch. Upon entering, you're welcomed into the entrance hall, where practical wood-effect vinyl flooring extends throughout the ground floor. The staircase rises to the first floor, while a generous storage cupboard houses the consumer unit and provides ample space for shoes and coats.

To the left, the spacious kitchen features stylish wood-effect units, tiled surrounds, and a central island with built-in storage. It comes well-equipped with an integrated electric oven, gas hob, extractor fan, and dishwasher, alongside dedicated space for a washing machine and fridge freezer.

Moving further into the property, you step into the bright and airy sitting/dining room, which benefits from a conservatory extension. French doors open onto the rear garden, creating a seamless connection between indoor and outdoor spaces. The under-stairs cupboard has been cleverly repurposed as a compact utility area, offering additional storage and space for a tumble dryer.

The first floor is fully carpeted and features three bedrooms-two well-proportioned doubles and a third, currently utilised as an office. The modern main bathroom is fitted with vinyl flooring and includes a bath with an electric shower over, along with a wash basin. A separate WC, also with vinyl flooring, features a vanity unit for added storage. Completing the first floor is a spacious storage cupboard on the landing, providing convenient additional space.

Outside, the rear garden features a terraced layout with two levels laid to patio, while the top level is laid to lawn. It is fully enclosed and bordered by mature trees, offering privacy and a tranquil setting. To the front of the property, ample on-road parking ensures convenient access.

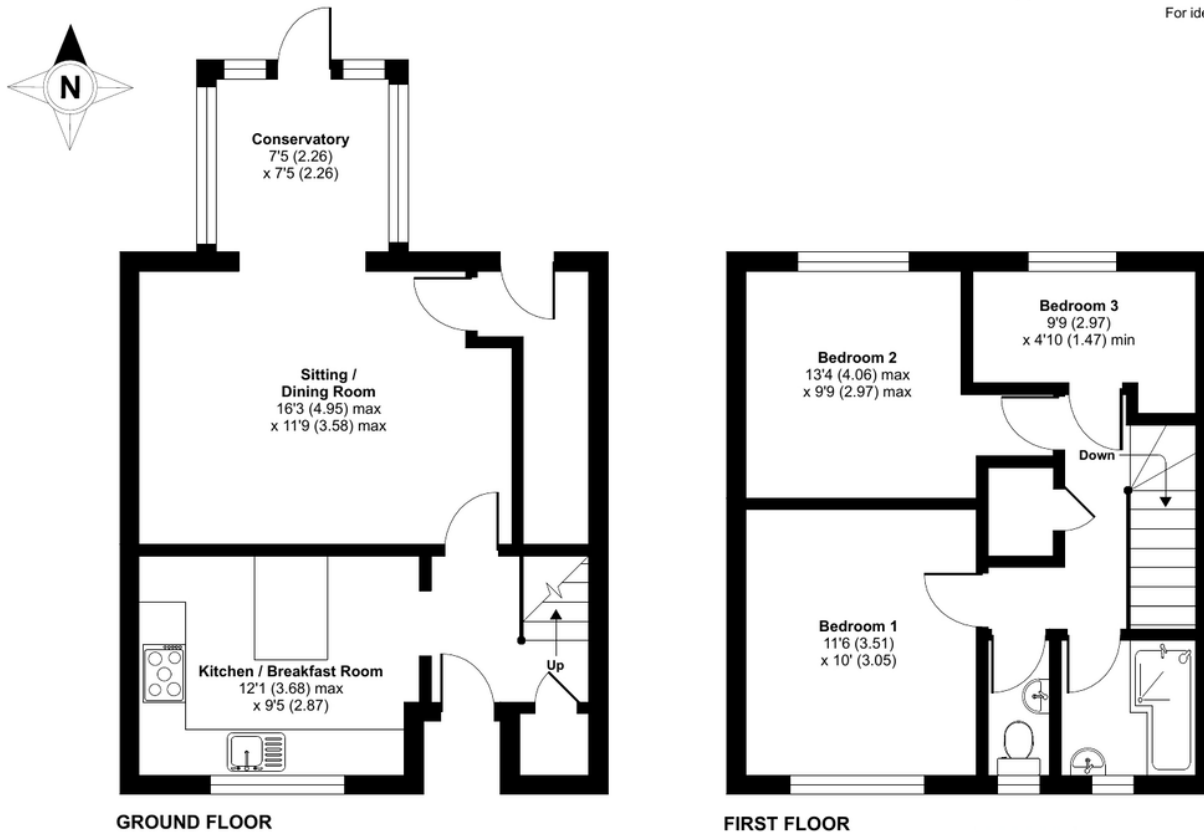
Tenure - Freehold
Council Tax Band B



Normandy Close, Exmouth, EX8

Approximate Area = 898 sq ft / 83.4 sq m

For identification only - Not to scale



Floor plan produced in accordance with RICS Property Measurement 2nd Edition, Incorporating International Property Measurement Standards (IPMS2 Residential). © n7checom 2025. Produced for Ashtons Complete (Complete Property). REF: 1306297



Our note. For clarification we have prepared these sales particulars as a general guide and have not carried out a detailed survey nor tested the services, appliances or fittings. Room sizes should not be relied upon for carpets or furnishings. If there are any important matters which are likely to affect your decision to buy, please contact us before viewing this property. These particulars, whilst believed to be accurate, are set out as a general outline only for guidance and do not constitute any part of an offer or contract. Intending purchasers should not rely on them as statements of representation of fact, but must satisfy themselves by inspection or otherwise as to their accuracy. No person in the employment of Complete Property Services has the authority to make or give any representation or warranty in respect of the property.

SKETCH PLAN FOR ILLUSTRATIVE PURPOSES ONLY. All measurements and sizes and locations of walls, doors, window fittings and appliances are shown conventionally and are approximate only and cannot be regarded as being a representation either by the Seller or his Agent. We hope that these plans will assist you by providing you with a general impression of the layout of the accommodation. The plans are not to scale nor accurate in detail. © Unauthorised reproduction prohibited.

As part of the service we offer we may recommend ancillary services to you which we believe will help with your property transaction. We wish to make you aware that should you decide to proceed we will receive a referral fee. This could be a fee, commission, payment or other reward. We will not refer your details unless you have provided consent for us to do so. You are not under any obligation to provide us with your consent or to use any of these services, but where you do you should be aware of the following referral fee information. You are also free to choose an alternative provider. To find out more about this, please speak to a member of the team.







Need a more complete picture? Get in touch with your local branch...

Tel [01392 422500](tel:01392422500)
Email exeter@completeproperty.co.uk
Web completeproperty.co.uk

Complete
141 Younghayes Rd
Cranbrook
EX5 7DR

Are you selling a property too? Call us to get a set of property details like these...

selling

letting

land &
new homes

signature
homes

complete.