



Lundy Drive, £265,000

- Fantastic three-bedroom family home
- Driveway & garage
- Well presented
- Refitted kitchen
- Spacious enclosed regards garden
- Sought after location
- Near to local parks and amenities
- EPC Rating: C



 3  1  2



About the property

We are delighted to present this superbly maintained three-bedroom semi-detached residence, ideally located in the highly desirable St Julian's area of Newport. This exceptional property is within walking distance of a wide range of local amenities, including Beechwood Park, well-regarded primary and secondary schools, and convenient main bus routes. The home also offers excellent transport links, with easy access to Junction 25 of the M4, making it an ideal choice for commuters.

The spacious and well-appointed accommodation comprises an inviting entrance hallway, a bright and comfortable lounge, a separate dining room, and a stylishly refitted kitchen. To the first floor, there are three well-proportioned bedrooms and a modern, recently updated shower room.

Externally, the property benefits from a driveway to the front providing off-road parking and access to a detached garage. To the rear, a generous and beautifully landscaped enclosed garden offers a private and tranquil outdoor space, perfect for families and entertaining.

This property presents an outstanding opportunity to acquire a family home in a prime location-early viewing is highly recommended.



Accommodation

Hallway

Lounge

13' 1" x 12' 4" (3.99m x 3.76m)

Dining Room

10' 8" x 12' 4" (3.25m x 3.76m)

Kitchen

First Floor Landing

Bedroom One

15' 2" x 8' 5" (4.62m x 2.57m)

Bedroom Two

8' 8" x 8' 6" (2.64m x 2.59m)

Bedroom Three

8' 7" x 6' 5" (2.62m x 1.96m)

Bathroom

Outside

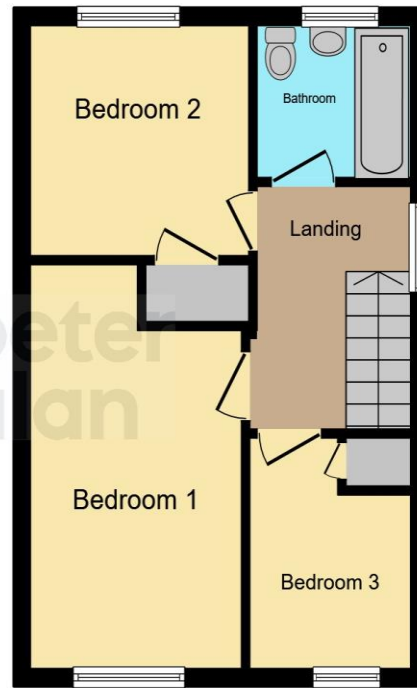
01633 221892

newport@peteralan.co.uk

Floorplan



Ground Floor



First Floor

This floor plan is for illustrative purposes only. It is not drawn to scale. Any measurements, floor areas (including any total floor area), openings and orientation are approximate. No details are guaranteed, they cannot be relied upon for any purpose and they do not form part of any agreement. No liability is taken for any error, omission or misstatement. A party must rely upon its own inspection(s). Powered by www.focalagent.com

Important Information

Note while we endeavour to make our sales details accurate and reliable, if there is any point which is of particular interest to you, please contact the office and we will be pleased to confirm the position for you. We have not personally tested any apparatus, equipment, fixtures, fittings or services and cannot verify they are in working order or fit for their purposes. Nothing in these particulars is intended to indicate that carpets or curtains, furnishings or fittings, electrical goods (whether wired or not). Gas fires or light fittings or any other fixtures not expressly included form part of the property offered for sale. This computer generated Floorplan, if applicable, is intended as a general guide to the layout and design of the property. It is not to scale and should not be relied upon for dimensions. Tenure: We cannot confirm the tenure of the property as we have not had access to the legal documents. The buyer is advised to obtain verification from their solicitor or surveyor.

Peter Alan Limited is registered in England and Wales under company number 2073153, Registered Office is Cumbria House, 16-20 Hockliffe Street, Leighton Buzzard, Bedfordshire, LU7 1GN. VAT Registration Number is 500 2481 05. For activities relating to regulated mortgages and non-investment insurance contracts, Peter Alan Limited is an appointed representative of Connells Limited which is authorised and regulated by the Financial Conduct Authority. Connells Limited's Financial Services Register number is 302221. Most buy-to-let

