



## Rhodfa Fadog, offers in excess of £245,000

- No Chain
- Garage And Driveway
- Close to Morriston Hospital
- Close to Local Schools
- Close To The M4 Corridor
- EPC Rating: C



 3  1  2



## About the property

Welcome to this refurbished three-bedroom semi-detached house, ideally situated in a sought-after location close to Morrision Hospital. This beautiful home boasts modern finishes and offers an exceptional living experience, with no chain for a hassle-free move.

Perfect for families or professionals

Conveniently located to the side of the property, the garage offers secure storage or parking. Ample parking space is available in front of the property, ensuring convenience for residents and visitors alike. The private, enclosed garden is perfect for relaxing or entertaining, with plenty of room for outdoor activities. Just a short distance from Morrision Hospital, this property is ideal for healthcare professionals. Enjoy quick and easy access to Swansea City Centre and surrounding areas, making commuting a breeze.

Move in without delay and start enjoying your new home immediately. Don't miss the opportunity to make this exceptional property your new home. Contact us today to arrange a viewing!



## Accommodation

**Hall** 14' 1" x 10' 1" ( 4.29m x 3.07m )

13' 2" x 6' ( 4.01m x 1.83m )

**Lounge**

14' 5" x 11' 7" ( 4.39m x 3.53m )

**Kitchen**

10' 8" x 18' 1" ( 3.25m x 5.51m )

**Bedroom One**

12' 6" x 10' 1" ( 3.81m x 3.07m )

**Bedroom Two**

12' 4" x 10' 1" ( 3.76m x 3.07m )

**Bedroom Three**

9' 6" x 7' 6" ( 2.90m x 2.29m )

**Bathroom**

6' 2" x 7' 5" ( 1.88m x 2.26m )

**Landing**

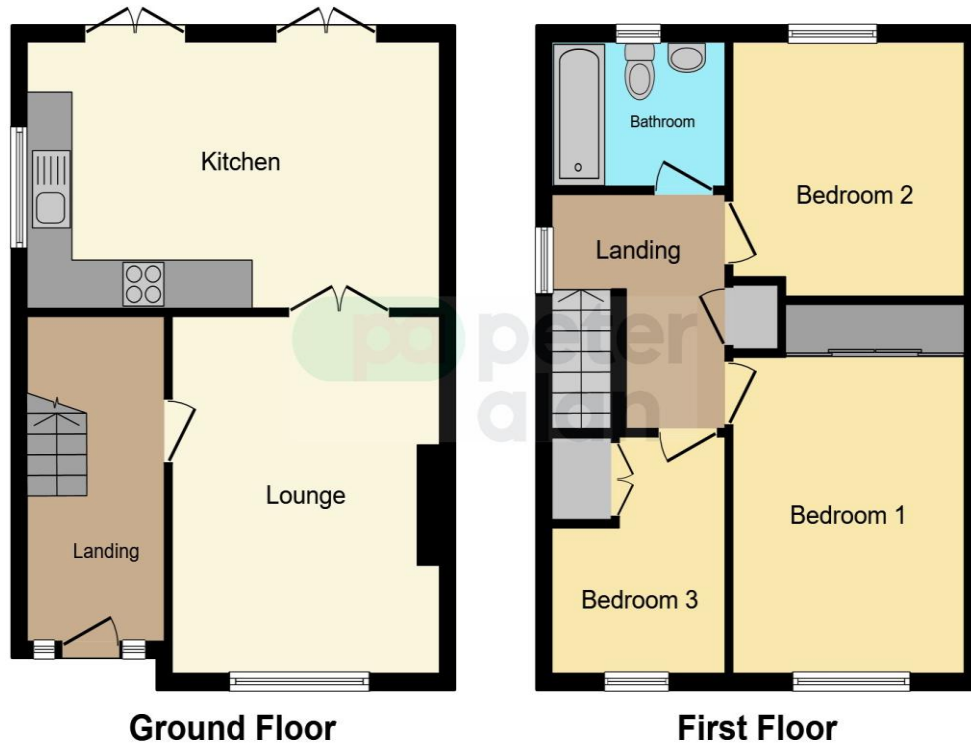
9' 5" x 7' 6" ( 2.87m x 2.29m )

**Garage**

01792 798201

morrison@peteralan.co.uk

## Floorplan



This floor plan is for illustrative purposes only. It is not drawn to scale. Any measurements, floor areas (including any total floor area), openings and orientation are approximate. No details are guaranteed, they cannot be relied upon for any purpose and they do not form part of any agreement. No liability is taken for any error, omission or misstatement. A party must rely upon its own inspection(s). Powered by [www.focalagent.com](http://www.focalagent.com)

## Important Information

Note while we endeavour to make our sales details accurate and reliable, if there is any point which is of particular interest to you, please contact the office and we will be pleased to confirm the position for you. We have not personally tested any apparatus, equipment, fixtures, fittings or services and cannot verify they are in working order or fit for their purposes. Nothing in these particulars is intended to indicate that carpets or curtains, furnishings or fittings, electrical goods (whether wired or not). Gas fires or light fittings or any other fixtures not expressly included form part of the property offered for sale. This computer generated Floorplan, if applicable, is intended as a general guide to the layout and design of the property. It is not to scale and should not be relied upon for dimensions. Tenure: We cannot confirm the tenure of the property as we have not had access to the legal documents. The buyer is advised to obtain verification from their solicitor or surveyor.

Peter Alan Limited is registered in England and Wales under company number 2073153, Registered Office is Cumbria House, 16-20 Hockliffe Street, Leighton Buzzard, Bedfordshire, LU7 1GN. VAT Registration Number is 500 2481 05. For activities relating to regulated mortgages and non-investment insurance contracts, Peter Alan Limited is an appointed representative of Connells Limited which is authorised and regulated by the Financial Conduct Authority. Connells Limited's Financial Services Register number is 302221. Most buy-to-let

**pa** peter  
alan