

Estate Agents
Commercial Agents
Letting & Management
Financial Services

London Properties



Stox Mead, Harrow Weald, Middlesex

London Properties are pleased to offer to the market this beautifully renovated three-bedroom end of terrace family home situated on Stox Mead, Harrow, offers a perfect blend of contemporary design, high-quality finishes, and everyday practicality. Having undergone a complete refurbishment, the property has been thoughtfully redesigned to create a stylish and functional family home that is ready to move straight into. With local shops, supermarkets, cafes, and restaurants close by, as well as the larger shopping facilities of Harrow Town Centre just a short drive away, this location offers the perfect balance of convenience and comfort. Internal viewings are highly recommended through London Properties by appointment only.

£587,500 Freehold



Harrow Weald Branch Tel: 020 8861 4615

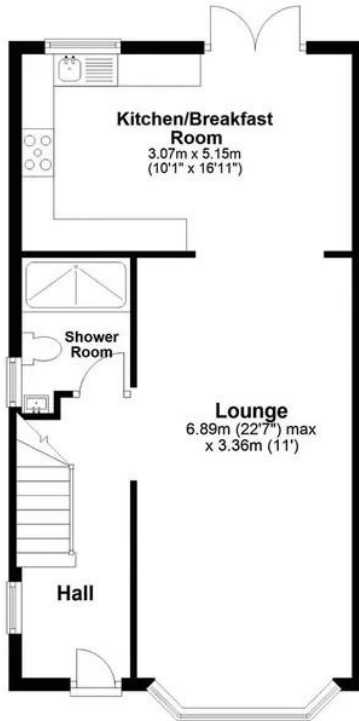
95 High Street, Harrow Weald, Middlesex, HA3 5DL. Fax: 020 8861 3610 Email: info@london-properties.co.uk

www.london-properties.co.uk

Proprietor: Mukesh B. Mehta

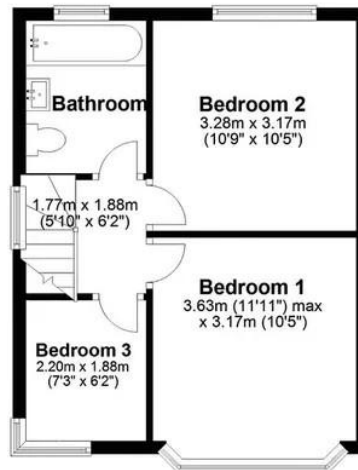
Ground Floor

Approx. 50.6 sq. metres (544.2 sq. feet)



First Floor

Approx. 34.1 sq. metres (366.8 sq. feet)



Total area: approx. 84.6 sq. metres (911.1 sq. feet)

For Illustration Purposes Only - Not To Scale

This floor plan should be used as a general outline for guidance only and does not constitute in whole or in part an offer or contract. Any intending purchaser or lessee should satisfy themselves by inspection, searches, enquiries and full survey as to the correctness of each statement. Any areas, measurements or distances quoted are approximate and should not be used to value a property or be the basis of any sale or let.

London Properties on behalf of themselves and for the vendors of these properties whose agents they are, give notice that: (1) These particulars do not constitute a contract or an offer. (2) All statements made in these particulars relating to these properties are made without responsibility on the part of London Properties or the vendor. (3) Any intending purchaser must satisfy himself by inspection or otherwise as to the correctness of these particulars. (4) London Properties or any person in their employment has no authority to make or give any warranty or representation what so ever in relation to these properties. (5) The above measurements were taken by a sonic measuring device and cannot be guaranteed to be 100% accurate.

ADDITIONAL PHOTOGRAPHS



London Properties on behalf of themselves and for the vendors of these properties whose agents they are, give notice that: (1) These particulars do not constitute a contract or an offer. (2) All statements made in these particulars relating to these properties are made without responsibility on the part of London Properties or the vendor. (3) Any intending purchaser must satisfy himself by inspection or otherwise as to the correctness of these particulars. (4) London Properties or any person in their employment has no authority to make or give any warranty or representation what so ever in relation to these properties. (5) The above measurements were taken by a sonic measuring device and cannot be guaranteed to be 100% accurate.

Stox Mead, Harrow Weald, Middlesex, HA3 5JX

ACCOMMODATION COMPRISES:

Located within a quiet residential cul-de-sac, this beautifully renovated three-bedroom home on Stox Mead, Harrow, offers a perfect blend of contemporary design, high-quality finishes, and everyday practicality. Having undergone a complete refurbishment, the property has been thoughtfully redesigned to create a stylish and functional family home that is ready to move straight into.

The hallway opens into a bright, expansive open-plan living and dining space. A smart rear extension enhances the room with abundant natural light, and the beautifully designed modern kitchen features high-quality finishes and integrated appliances, providing a sleek and functional hub

Upstairs, the home offers three well-proportioned bedrooms, including two generous doubles and a versatile single room perfect as a nursery or home office. The newly installed family bathroom showcases elegant tiling and contemporary fittings, while a stylish ground-floor shower room adds further convenience.

Externally, the property impresses with its freshly rendered façade, giving the home a crisp, modern look that complements its high-end interior. The rear garden offers a low-maintenance outdoor retreat.

Stox Mead is a peaceful, family-friendly location with exceptional connectivity. Commuters will appreciate the easy access to Harrow & Wealdstone Station (Bakerloo Line, Overground & National Rail), offering fast links to Central London, Euston, and Watford Junction. Headstone Lane (Overground) and Kenton (Bakerloo Line) are also close by, ensuring superb transport options in every direction

Families are well catered for with several highly regarded schools nearby, including Belmont School, St Joseph's Catholic Primary School, and Harrow High School. A selection of parks and green spaces such as Headstone Manor Recreation Ground and Harrow Weald Park provide plenty of outdoor leisure opportunities.

The area is well served by a number of highly regarded schools, including Belmont School, St Joseph's Catholic Primary School, and Harrow High School, all known for their strong reputations. There are also several nearby parks and open spaces, such as Headstone Manor Recreation Ground and Harrow Weald Park, offering plenty of options for outdoor leisure.

With local shops, cafés, restaurants, and supermarkets within easy reach, plus the extensive amenities of Harrow Town Centre just minutes away, this location delivers the perfect balance of convenience, community, and lifestyle.

Beautifully finished and ideally situated, this exceptional home on Stox Mead is a rare opportunity, offering contemporary living, premium quality, and outstanding transport and schooling options in one of Harrow's most desirable residential areas

GENERAL INFORMATION:

TENURE:	Freehold
LOCAL AUTHORITY:	Harrow
COUNCIL TAX:	Band - D
FIXTURES & FITTINGS:	All fixtures and fittings are expressly excluded from the sale unless specifically mentioned herein.
VIEWINGS:	Through London Properties by appointment only.
AGENTS NOTE:	London Properties have not tested apparatus, equipment, fittings or services and so cannot verify they are in working order. The buyer is advised to obtain verification from their solicitor.
MAILING LIST:	We at the London Properties Sales Team hope to be in regular contact with you to assist in your search for a suitable property. To keep our records up to date we request that you keep us informed as to the progress of your search so as to avoid any unnecessary inconvenience. Thank you for your assistance in this matter.
DETAILS BY E-MAIL:	We can send full colour sales particulars by e-mail. If you would like to receive details via this medium,

please either telephone us with your e-mail address
or send an e-mail to the sales team at:
info@london-properties.co.uk

**FREE VALUATIONS &
MARKETING ADVICE:**

We at London Properties would like to assist you
with the sale of your property? Just contact the sales
team and we will be pleased to offer you a free
valuation and market appraisal, a service that we
provide with obligation. Competitive fees are
available for both sole and multiple agency
instructions. Please contact the sales team on:
020 8861 4615

**MORTGAGES: We can offer help and advice in arranging your mortgage.
Written quotations are available on request. Please contact this office.**

**REMEMBER: YOUR HOME IS AT RISK IF YOU DO NOT KEEP UP WITH
REPAYMENTS ON A MORTGAGE OR OTHER LOANS SECURED ON IT.**

For your FREE, No-obligation lettings or sales valuation, Please call 020 8861 4615

A member of  **OnTheMarket**

View all of our
properties on

 **PrimeLocation**

London Properties on behalf of themselves and for the vendors of these properties whose agents they are, give notice that: (1) These particulars do not constitute a contract or an offer. (2) All statements made in these particulars relating to these properties are made without responsibility on the part of London Properties or the vendor. (3) Any intending purchaser must satisfy himself by inspection or otherwise as to the correctness of these particulars. (4) London Properties or any person in their employment has no authority to make or give any warranty or representation what so ever in relation to these properties. (5) The above measurements were taken by a sonic measuring device and cannot be guaranteed to be 100% accurate.

London Properties

See all of our properties on

ZOOPLA

London Properties on behalf of themselves and for the vendors of these properties whose agents they are, give notice that: (1) These particulars do not constitute a contract or an offer. (2) All statements made in these particulars relating to these properties are made without responsibility on the part of London Properties or the vendor. (3) Any intending purchaser must satisfy himself by inspection or otherwise as to the correctness of these particulars. (4) London Properties or any person in their employment has no authority to make or give any warranty or representation what so ever in relation to these properties. (5) The above measurements were taken by a sonic measuring device and cannot be guaranteed to be 100% accurate.

London Properties