



Yr Hendre, £230,000

- Fully refurbished three-bedroom semi-detached home
- Rear hardstand providing excellent parking
- Modern, move-in-ready interior throughout
- Easy commuting to Cardiff, Pontypridd, and surrounding areas
- Located in the popular residential area



 3  1  1



About the property

This fully refurbished three-bedroom semi-detached home in Yr Hendre, Nantgarw, offers a fantastic opportunity for anyone seeking a modern, move-in-ready property in a highly convenient location. Finished to a high standard throughout, the home combines fresh contemporary styling with practical living spaces and excellent outdoor features.

The property benefits from three well-proportioned bedrooms, making it ideal for families, first-time buyers, or those needing extra space for a home office. One of the standout improvements is the hardstand to the rear of the property, providing excellent off-road parking — a valuable asset in this popular residential area.

Nantgarw itself offers a superb balance of peaceful suburban living with outstanding transport links. The A470 and M4 are just minutes away, making commuting to Cardiff, Pontypridd, or further afield quick and straightforward. Whether you work locally or travel regularly, the location is exceptionally convenient.

With its modern finish, generous bedrooms, and excellent access routes, this refurbished home is a fantastic find in a well-connected and increasingly sought-after area.

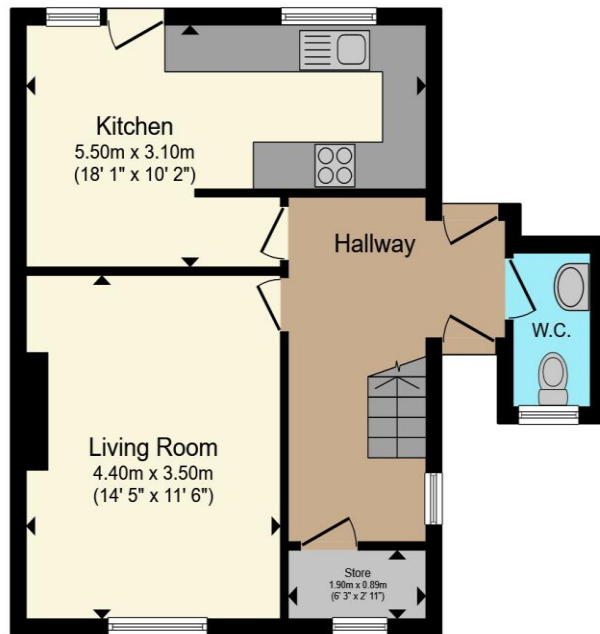


Accommodation

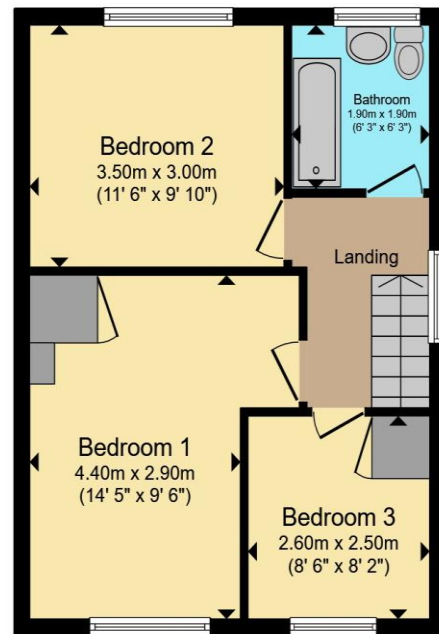
02920 867611

caerphilly@peteralan.co.uk

Floorplan



Ground Floor



First Floor

Total floor area 87.5 m² (941 sq.ft.) approx

This floor plan is for illustrative purposes only. It is not drawn to scale. Any measurements, floor areas (including any total floor area), openings and orientation are approximate. No details are guaranteed, they cannot be relied upon for any purpose and they do not form part of any agreement. No liability is taken for any error, omission or misstatement. A party must rely upon its own inspection(s). Powered by www.propertybox.io



Important Information

Note while we endeavour to make our sales details accurate and reliable, if there is any point which is of particular interest to you, please contact the office and we will be pleased to confirm the position for you. We have not personally tested any apparatus, equipment, fixtures, fittings or services and cannot verify they are in working order or fit for their purposes. Nothing in these particulars is intended to indicate that carpets or curtains, furnishings or fittings, electrical goods (whether wired or not). Gas fires or light fittings or any other fixtures not expressly included form part of the property offered for sale. This computer generated Floorplan, if applicable, is intended as a general guide to the layout and design of the property. It is not to scale and should not be relied upon for dimensions. Tenure: We cannot confirm the tenure of the property as we have not had access to the legal documents. The buyer is advised to obtain verification from their solicitor or surveyor.

Peter Alan Limited is registered in England and Wales under company number 2073153, Registered Office is Cumbria House, 16-20 Hockliffe Street, Leighton Buzzard, Bedfordshire, LU7 1GN. VAT Registration Number is 500 2481 05. For activities relating to regulated mortgages and non-investment insurance contracts, Peter Alan Limited is an appointed representative of Connells Limited which is authorised and regulated by the Financial Conduct Authority. Connells Limited's Financial Services Register number is 302221. Most buy-to-let

